

THE DEDICATED POS POWER CIRCUIT REQUIRES AN ISOLATED GROUND IN ADDITION TO THE NORMAL COMMON BUILDING GROUND. THE ISOLATED GROUND WIRE SERVES TWO PURPOSES:

- \* AS A SAFETY PATH TO GROUND.
- \* AS A ZERO REFERENCE POINT FOR ALL POS DIGITAL LOGIC.

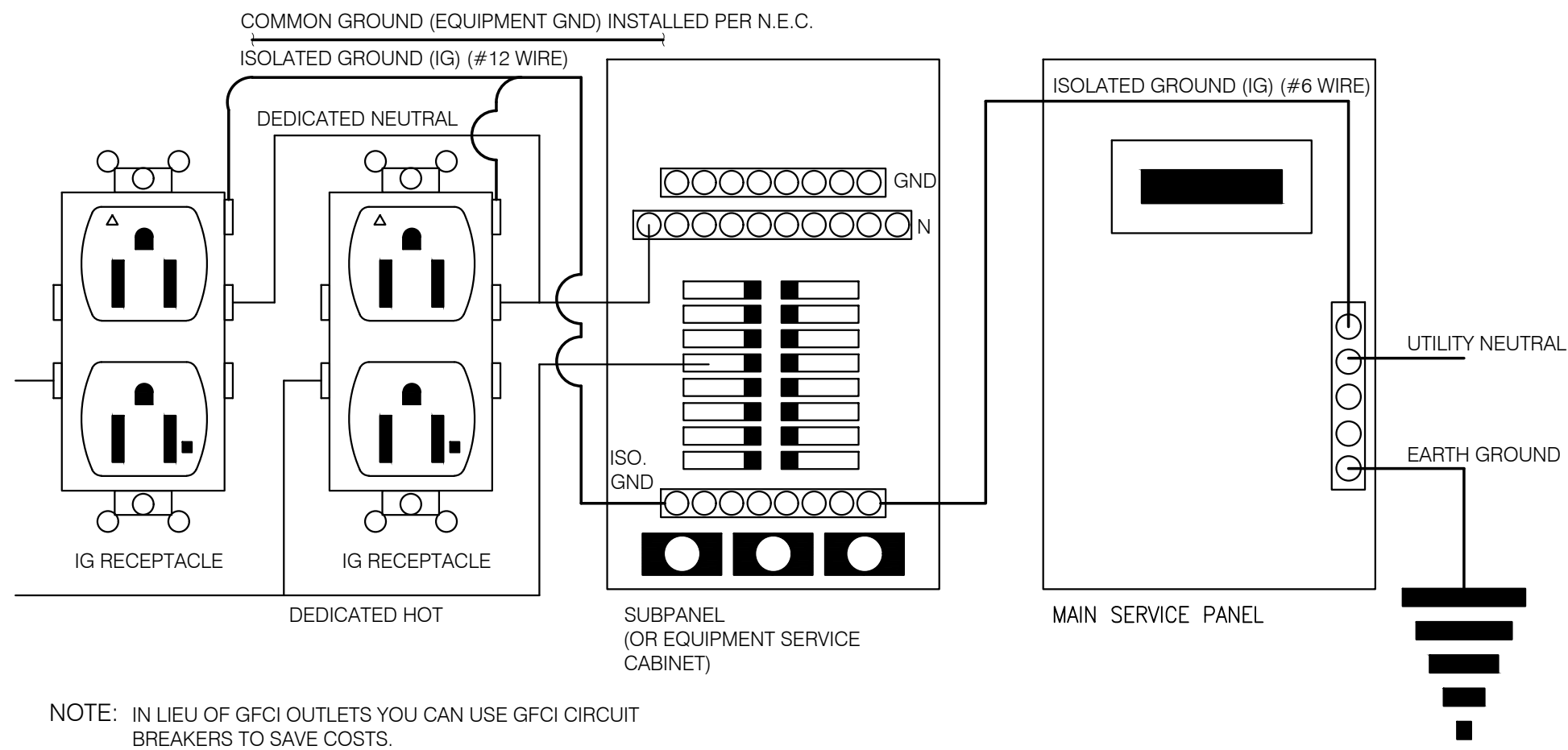
THE GROUND MUST EXHIBIT THE LOWEST POSSIBLE IMPEDANCE TO MINIMIZE VOLTAGE TRANSIENTS AND NOISE.

BE SURE TO:

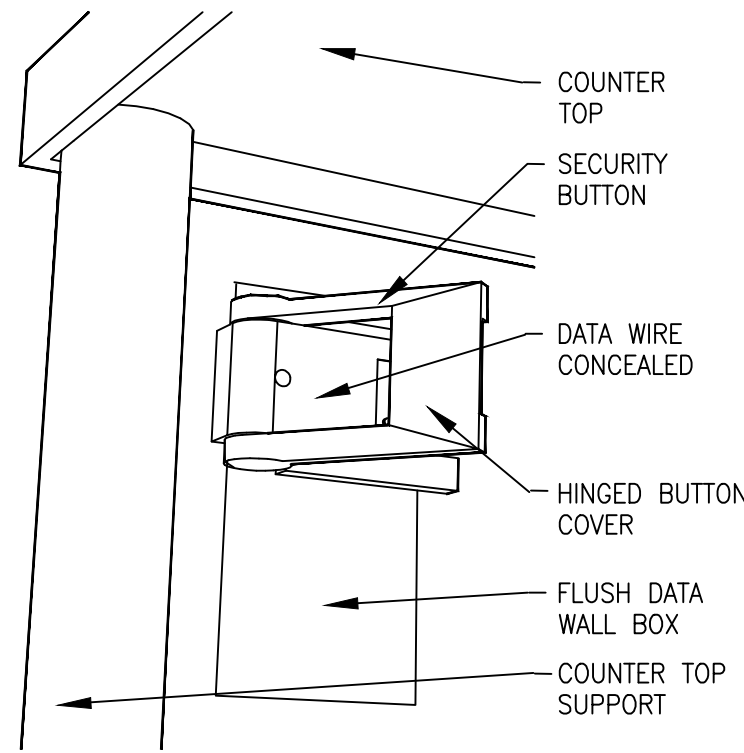
- \* USE AN INSULATED CONDUCTOR FOR THE ISOLATED GROUND WIRE.
- \* RUN THE ISOLATED GROUND WIRE THROUGH THE SAME CONDUIT AS THE HOT AND NEUTRAL WIRES.
- \* INSTALL ONLY ISOLATED GROUND (IG) TYPE RECEPTACLES.
- \* CONNECT THE ISOLATED GROUND WIRE TO BUILDING GROUND ONLY AT THE MAIN SERVICE PANEL.
- \* VERIFY THAT IG RECEPTACLES PRE-WIRED IN OWNER SUPPLIED EQUIPMENT HAVE A TRUE ISOLATED GROUND THAT CAN BE TRACED BACK TO THE BUILDING GROUND AT THE MAIN SERVICE PANEL.

DO NOT CONNECT THE ISOLATED GROUND WIRE TO THE CONDUIT, JUNCTION BOXES, THE FRAME ON A SUBPANEL, OR ANY OTHER METAL SURFACE.

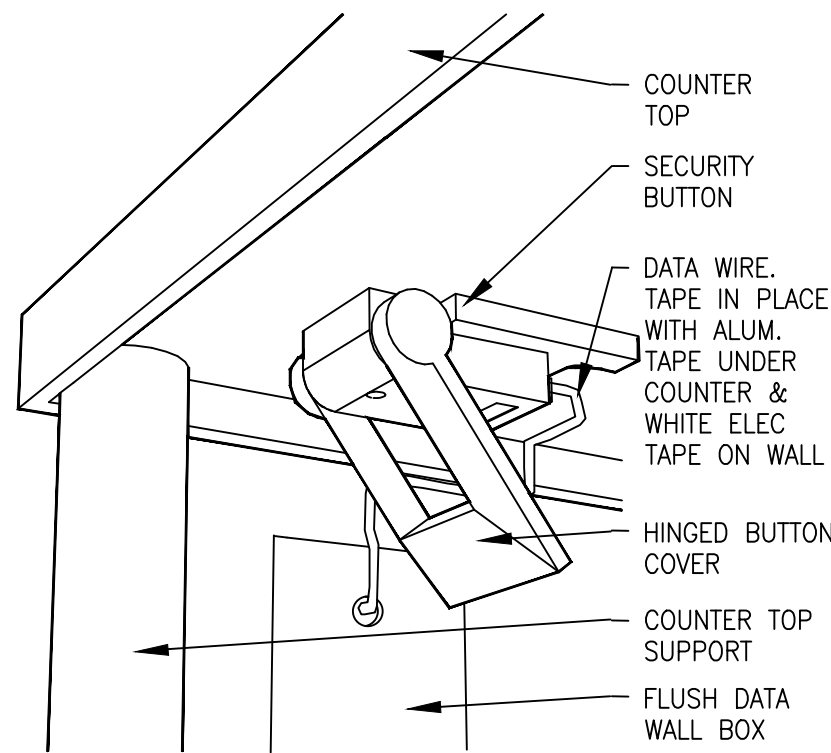
DEDICATED CIRCUITS: DEDICATED CIRCUITS REQUIRE A DEDICATED HOT AND A DEDICATED NEUTRAL THAT ARE NOT SHARED WITH ANY OTHER CIRCUITS. IG RECEPTACLES MUST BE 'PHASE ALIGNED' WITH THE 'B' PHASE OF BUILDING SUBPANEL 'A'.



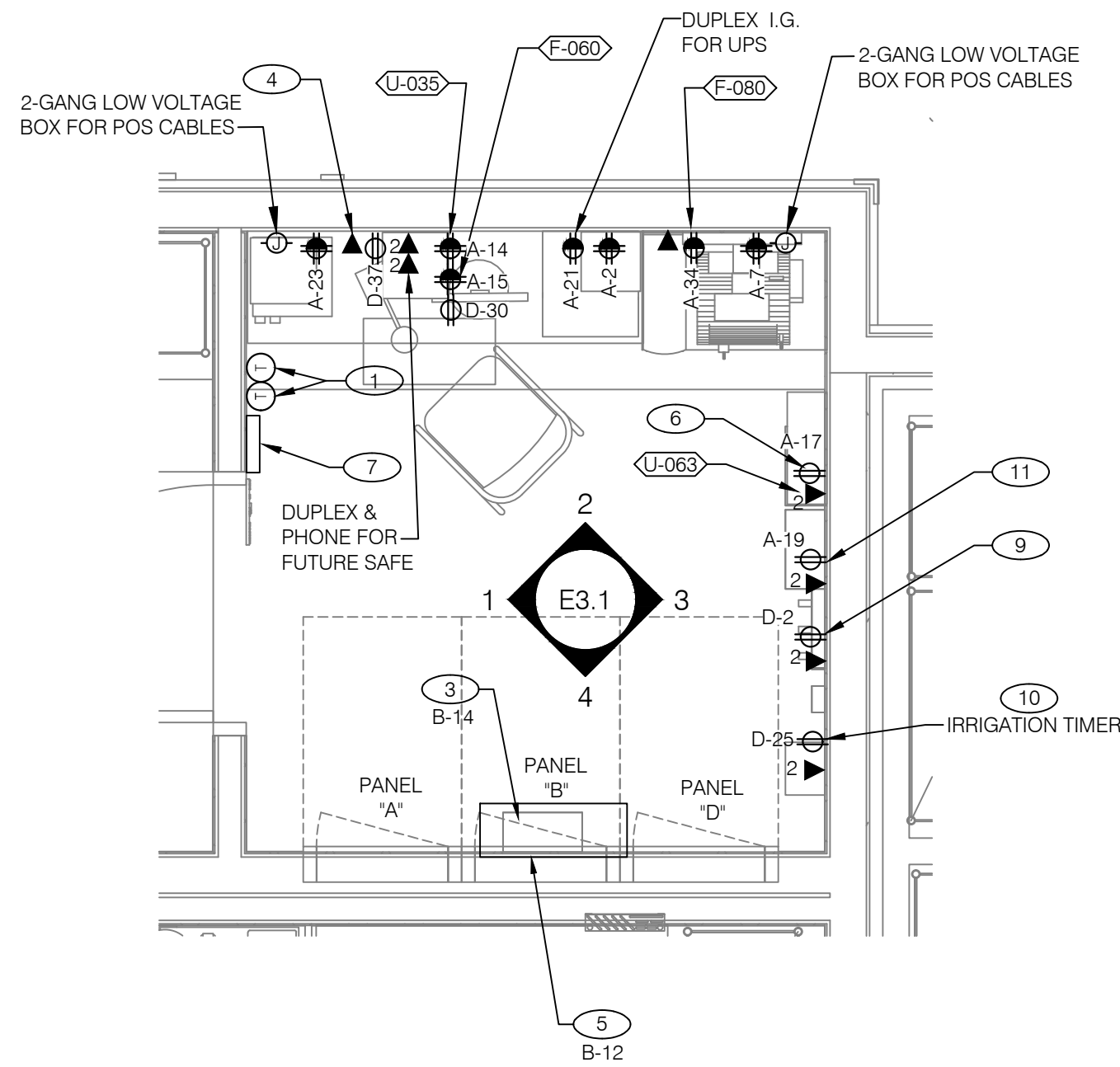
P.O.S. ISOLATED GROUND SYSTEM N.T.S. 14



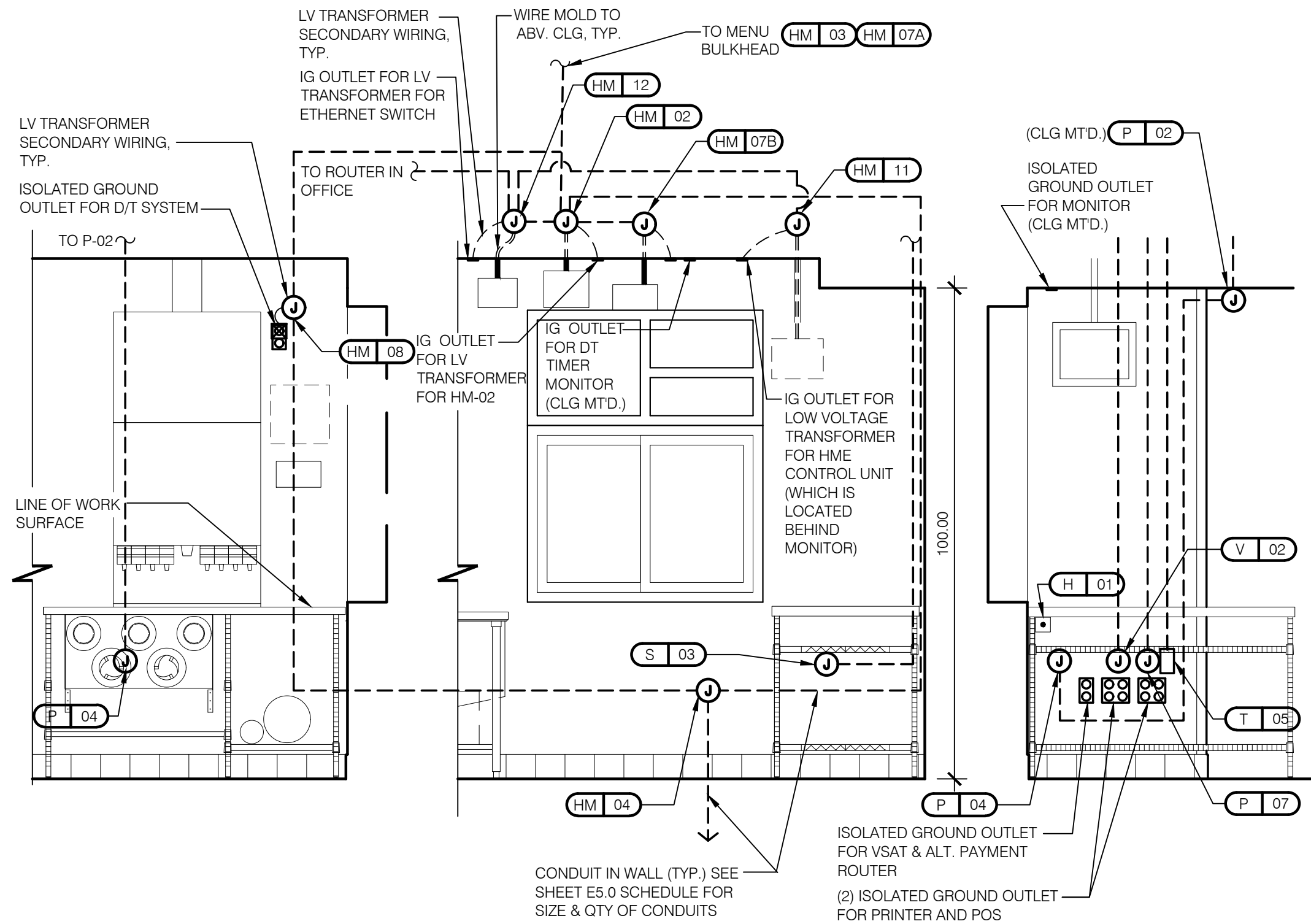
SECURITY BUTTON ON WALL N.T.S. 5



SECURITY BUTTON UNDER COUNTER N.T.S. 6

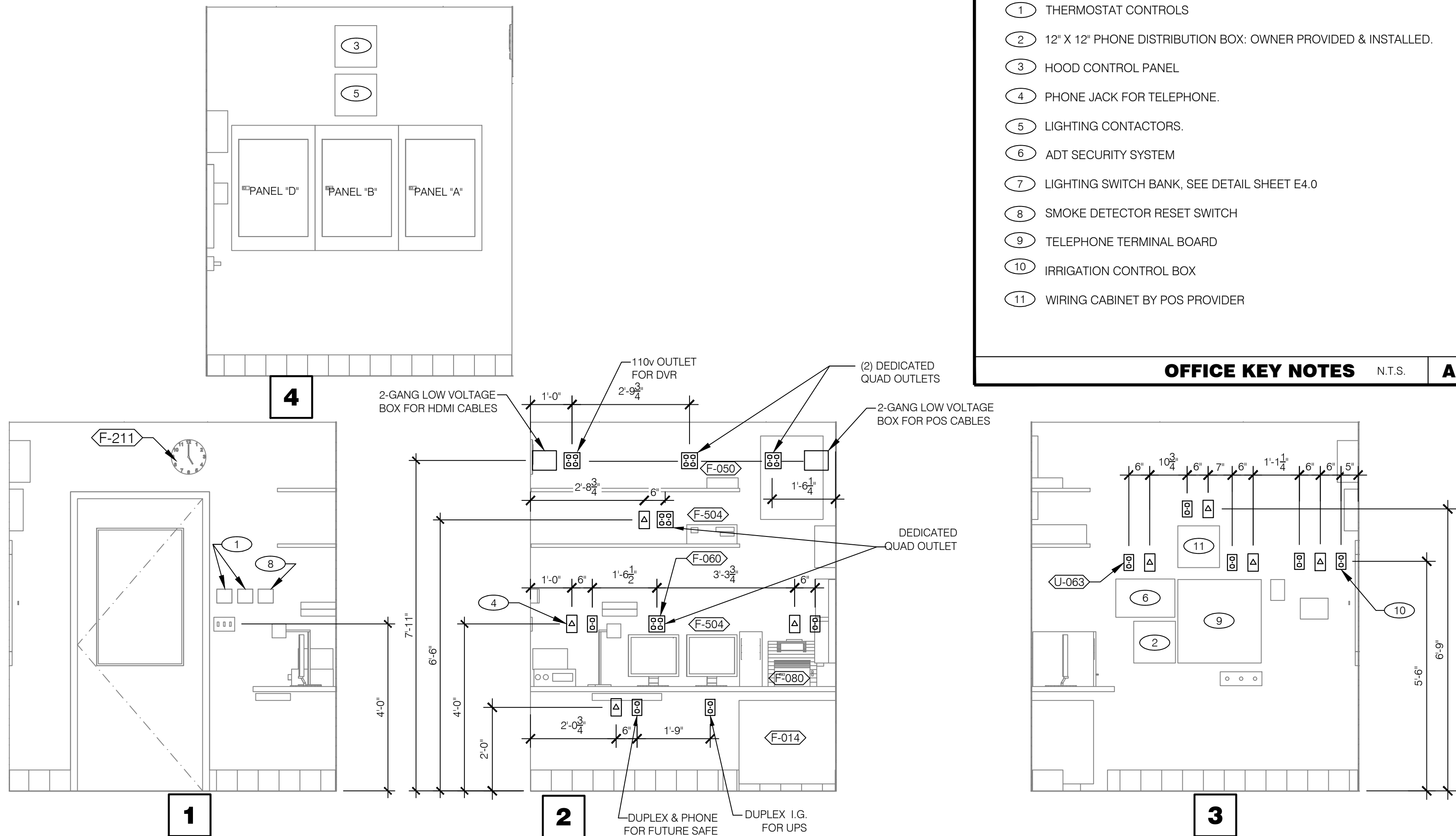


ENLARGED POWER AND COMMUNICATIONS PLAN (OFFICE) 1/2" = 1'-0" 3



SEE SHEET E5.0 FOR COMMUNICATION TAG SCHEDULE

ENLARGED INTERIOR ELEVATION (D/T WINDOW) 1/2" = 1'-0" 16



- 1 THERMOSTAT CONTROLS
- 2 12" X 12" PHONE DISTRIBUTION BOX: OWNER PROVIDED & INSTALLED.
- 3 HOOD CONTROL PANEL
- 4 PHONE JACK FOR TELEPHONE.
- 5 LIGHTING CONTACTORS.
- 6 ADT SECURITY SYSTEM
- 7 LIGHTING SWITCH BANK, SEE DETAIL SHEET E4.0
- 8 SMOKE DETECTOR RESET SWITCH
- 9 TELEPHONE TERMINAL BOARD
- 10 IRRIGATION CONTROL BOX
- 11 WIRING CABINET BY POS PROVIDER

OFFICE KEY NOTES N.T.S. A

CONTRACT DATE: XXXXX  
BUILDING TYPE: XXXXX  
PLAN VERSION: XXXXX  
SITE NUMBER: 315669  
STORE NUMBER: XXXXX

TACO BELL

SPEARS CREEK CHURCH RD.  
ELGIN, SC 29045



ENDEAVOR 2.0

ENLARGED  
POWER PLAN  
AND DETAILS

E3.1