

RECORD OF SURVEY
PROPERTY OF JAMES N. GUICE, ET UX
A PORTION OF SECTIONS 27 and 26, T.6N., R.10E., MDM.

LEDGER L. McMINN - AMADOR COUNTY SURVEYOR
SCALE 1"=100' APRIL, 1963

SURVEYORS CERTIFICATE

This map correctly represents a survey made by me or under my direction in conformance with the requirements of Chapter 15 of Division 3 of the Business and Professions Code at the request of Golden Chain Realty.

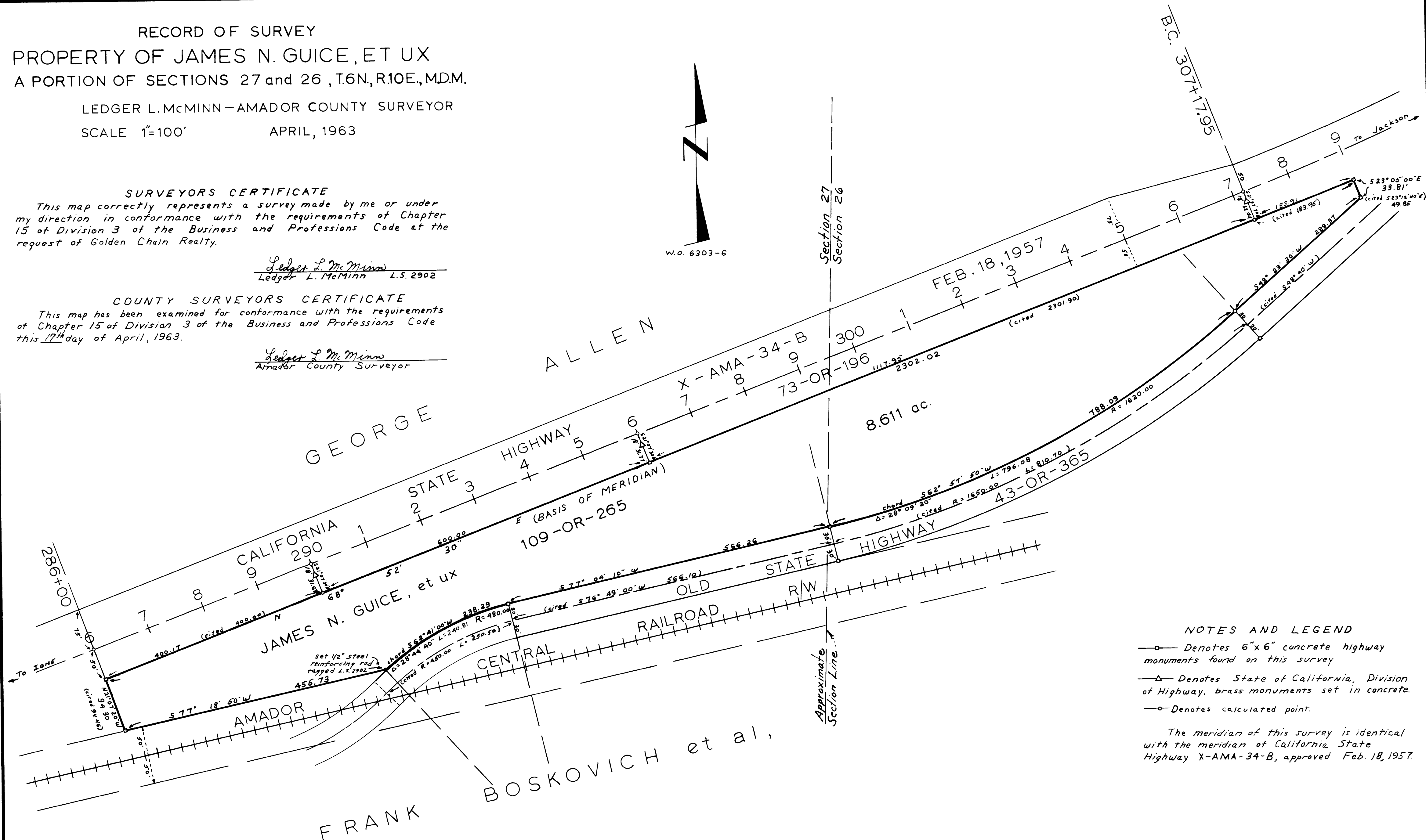
Ledger L. McMinn
Ledger L. McMinn L.S. 2902

COUNTY SURVEYORS CERTIFICATE

This map has been examined for conformance with the requirements of Chapter 15 of Division 3 of the Business and Professions Code this 17th day of April, 1963.

Ledger L. McMinn
Amador County Surveyor

W.D. 6303-6



NOTES AND LEGEND

- Denotes 6"x6" concrete highway monuments found on this survey
- △— Denotes State of California, Division of Highway, brass monuments set in concrete.
- Denotes calculated point.

The meridian of this survey is identical with the meridian of California State Highway X-AMA-34-B, approved Feb. 18, 1957.

COUNTY RECORDERS CERTIFICATE

Filed for record this 17 day of April, 1963, at 10 A.M. in Book 9 of Maps and Plats at page 37 at the request of Ledger L. McMinn.

Fee 5.00 Per 0 William Dutton
Amador County Recorder