



PANDA RESTAURANT GROUP INC.  
1683 Walnut Grove Ave.  
Rosemead, California  
91770  
Telephone: 626.799.9898  
Facsimile: 626.372.8288

All ideas, designs, arrangement and plans indicated, or represented by this drawing are the property of Panda Express Inc. and were created for use on this specific project. None of these ideas, designs, arrangements or plans may be used by or disclosed to any person, firm, or corporation without the written permission of Panda Express Inc.

REVISIONS:		

ISSUE DATE:		
1	CHECK SET	10-23-20
2	PERMIT SET	03-15-21
3	BID SET	04-02-21

DRAWN BY: KTF / EJP

PANDA PROJECT #: S4-21-D7864  
ARCH PROJECT #: P7350

 www.cphcorp.com <b>A Full Service A &amp; E Firm</b>	Plans Prepared By: <b>CPI Design, Inc.</b> 500 West Fulton St. Sanford, FL 32771 Ph: 407.322.8841		
	State of Virginia Licensees: Engineer No. 407006317 Surveyor No. N/A Architect No. 407006317 Landscape No. 407006317		

PANDA EXPRESS  
END CAP - TENANT BUILD OUT  
4501 S LABURNUM AVE  
RICHMOND VA, 23231

E-104

ROOF POWER PLAN

- ALL ROOF MOUNTED EQUIPMENT SHALL BE IN NEMA-3R ENCLOSURES.
- ALL CONDUIT RUNS SHOWN ON THE ROOF SHALL BE RUN BELOW IN THE CEILING SPACE WHERE AMBIENT TEMPERATURE WILL BE BELOW 30° C. FINAL CONNECTIONS TO THE ROOF EQUIPMENT IS LIMITED TO 5'-0" OF DIRECT SOLAR EXPOSURE.
- NOT USED.
- VERIFY ALL FUSE SIZES AND TYPES WITH THE AIR CONDITIONING EQUIPMENT MANUFACTURER PRIOR TO INSTALLATION.
- REVIEW THE MECHANICAL PLANS FOR THE AIR CONDITIONING CONTROL REQUIREMENTS AND SCOPE OF WORK PRIOR TO BIDDING AND INCLUDE ALL COSTS IN BID.
- VERIFY CONNECTION POINTS OF ALL HVAC EQUIPMENT PRIOR TO INSTALLATION. PROVIDE CONTROL VOLTAGE CONNECTION TO DUCT MTD. SMOKE DETECTOR AS REQUIRED BY MECHANICAL DRAWING M-100.
- SEE MECHANICAL DRAWINGS FOR EXACT LOCATIONS OF MECHANICAL EQUIPMENT AND THERMOSTATS. PROVIDE RACEWAY SYSTEM FOR ALL CONTROL WIRING AS REQUIRED BY MECHANICAL DRAWING M-100.
- G.C. COORDINATE ELECTRICAL, MECHANICAL, FIRE ALARM (IF REQUIRED) FOR INTERLOCK SEQUENCE.
- RESTROOM EXHAUST FAN TO BE POWERED FROM BACK OF HOUSE LIGHTING CIRCUIT. SEE DETAIL 5 / E-400 FOR ADDITIONAL INFORMATION.

## ROOF PLAN GENERAL NOTES 2

NOT TO SCALE E-104

- ROUTE HOMERUN THROUGH BACK OF HOUSE LIGHTING CIRCUIT. REFER TO LIGHTING PLAN, SHEET 1 / E-101. FAN TO BE CONTROLLED BY SWITCH FOR BACK OF HOUSE LIGHTING.
- DUCT SMOKE DETECTOR, FURNISHED BY MECHANICAL/FACORY, WIRED BY ELECTRICAL / FIRE ALARM CONTRACTOR. FURNISH AND INSTALL ALL RACEWAY, WIRING, AND ADDITIONAL ACCESSORIES REQUIRED FOR CODE COMPLIANCE AND UNIT SHUTDOWN.
- CIRCUIT FEEDS FROM PANELBOARD - THROUGH HOOD CONTROL PANEL - UP TO ROOF. REFER TO DETAIL, SHEET 3 / E-401 & KITCHEN HOOD SUBMITTAL DATA.
- REFER TO CONDENSING UNIT WIRING DIAGRAM, SHEET 7 / E-400.
- STRUT RACK SUPPORT FOR EQUIPMENT DISCONNECT SWITCHES. REFER TO DETAIL, SHEET 2 / E-401.
- PROVIDE AND INSTALL 2-1/2" DIA GALVANIZED RIGID METAL CONDUIT AND WEATHERHEAD AS SHOWN. CONDUIT TO BE STRAPPED TO CLOSEST JOIST TO THE MANAGER'S STATION (FULL DEPTH). SEE DETAIL 2/A-108.
- DO NOT INSTALL UNTIL BACK DRAFT DAMPER INSTALLATION IS COMPLETE. UTILIZE FACTORY KNOCKOUTS FOR ELECTRICAL RUN FOR THIS FAN. REFER TO SHEET M-402.
- MOUNT PHOTOCELL ON CONDENSER RACK ON THE ROOF FACING NORTH. CONNECT TO LIGHTING CONTROL PANEL.
- STUB ELECTRICAL FEED FOR EF-1 & EF-2, THROUGH ROOF ON HINGE SIDE OF EXHAUST FANS, IN LOCATION AS SHOWN ON POWER ROOF PLAN. REFER TO DETAIL 3 / M-501 FOR ADDITIONAL DETAILS.
- ROUTE POWER FEEDS VIA FACTORY PROVIDED THRU-BASE CONNECTION AREA. COORDINATE WITH MECHANICAL.
- UNIT INCLUDES FACTORY MOLDED CASE DISCONNECT SWITCH (NO OCP). VERIFY WITH MECHANICAL SUBMITTAL DATA. PROVIDE DISCONNECT IF / AS REQUIRED.

## ROOF PLAN KEYED NOTES 3

NOT TO SCALE E-104

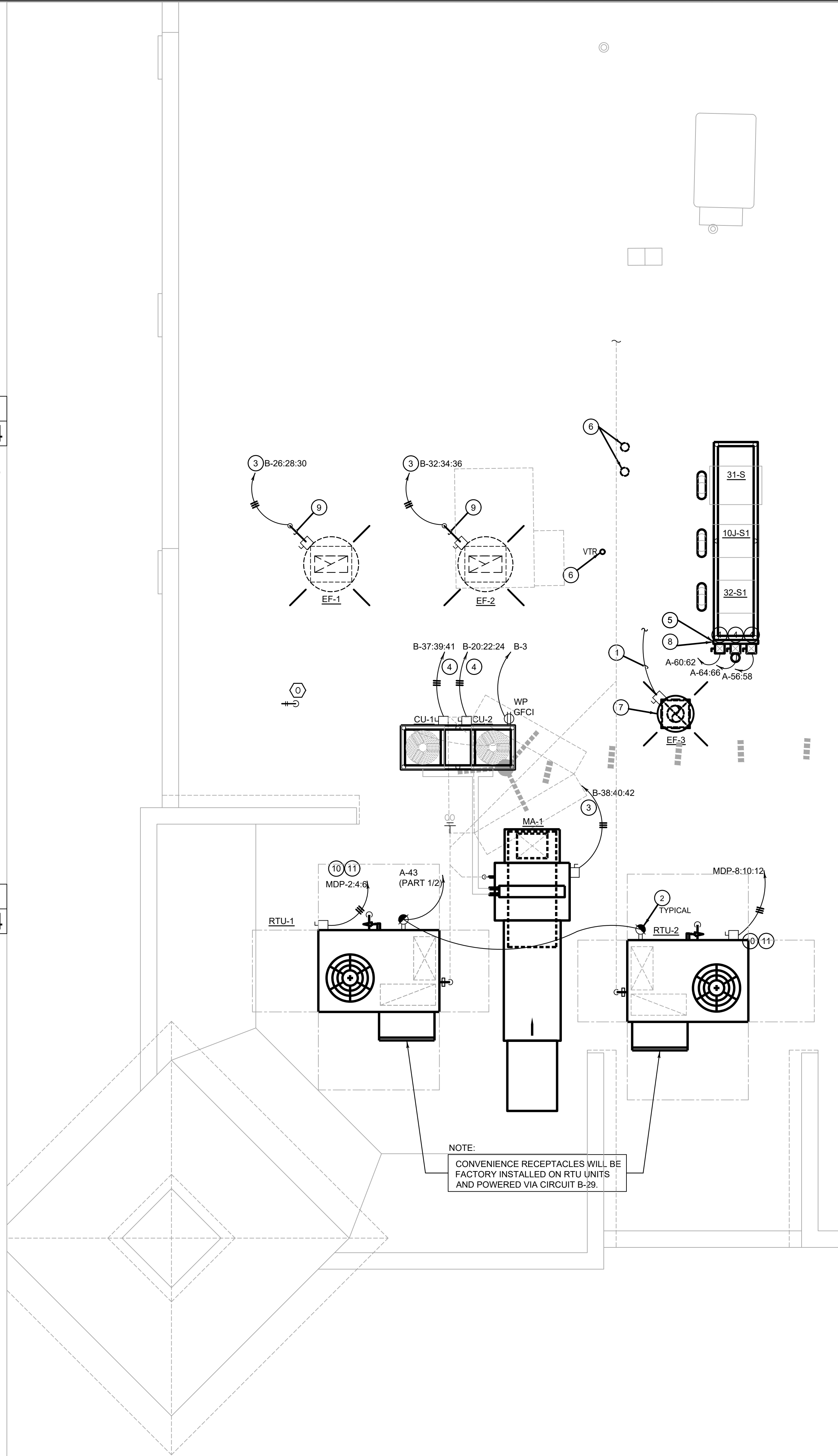
## ROOFTOP EQUIPMENT SCHEDULE

TAG	DESCRIPTION	KW	H.P.	FLA	VOLT/Ø	WIRE, CONDUIT	CONN.	MOUNT HEIGHT	DISC. SW. WITH RK1 FUSES PER MFR'S REQ'S. AND/OR REMARKS
RTU1	A/C UNIT		26	480V.3Ø	3 #8, #8 GND., 1" C.		AT UNIT	30A. 3P. 3F. WP	①④
RTU2	A/C UNIT		26	480V.3Ø	3 #8, #8 GND., 1" C.		AT UNIT	30A. 3P. 3F. WP	①④
CU-1	CONDENSING UNIT		21.4	208V.3Ø	3 #10, #10 GND., 1" C.		AT UNIT	30A. 3P. 3F. WP	①
CU-2	CONDENSING UNIT		21.4	208V.3Ø	3 #10, #10 GND., 1" C.		AT UNIT	30A. 3P. 3F. WP	①
MA-1	MAKE-UP AIR UNIT	5.0	17.5	208V.3Ø	3 #10, #10 GND., 1" C.		AT UNIT		①④
EF-1	EXHAUST FAN	2.0	7.8	208V.3Ø	3 #12, #12 GND., 3/4" C.		AT UNIT		①
EF-2	EXHAUST FAN	2.0	7.8	208V.3Ø	3 #12, #12 GND., 3/4" C.		AT UNIT		①
EF-3	EXHAUST FAN	1/4	5.8	120V.1Ø	2 #12, #12 GND., 3/4" C.		AT UNIT	30A. 2P. 1F. WP	①④
31-S	W/I COOLER COND.	1.5	15.0	208V.1Ø	2 #12, #12 GND., 3/4" C.		AT UNIT		②③
32-S1	W/I FREEZER COND.	1.5	10.1	208V.1Ø	2 #12 #12 GND., 3/4" C.		AT UNIT		②③
10J-S1	ICE MACHINE COND.		13	208V.1Ø	2 #12, #12 GND., 3/4" C.		AT UNIT		②③

- ① DISCONNECT SWITCH PROVIDED WITH UNIT.  
② COMBINATION 30A. 2P. 2F. WP DISCONNECT SWITCH WITH RK5 FUSES PER MANUFACTURER RECOMMENDATION.  
③ COMBINE CIRCUITRY IN 1" CONDUIT FROM J-BOX ON EQUIPMENT DISCONNECT SWITCH SUPPORT. REFER TO DETAIL 2 / E-401.  
④ ELECTRICAL FEEDS SHALL BE ROUTED FROM PLENUM SPACE, UP THROUGH EQUIPMENT CURB, INTO BOTTOM OF EQUIPMENT, THROUGH FACTORY INSTALLED WATER TIGHT CONNECTIONS.

## HVAC EQUIPMENT SCHEDULE 4

NOT TO SCALE E-104



## ROOF POWER PLAN 1

1/4" = 1'-0" E-104