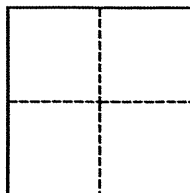


# VERTICAL CORNER RECORD

BK 94 PG 90

Agency Index \_\_\_\_\_  
Document Number CR 9946

City of HAYWARD County of ALAMEDA, California  
Brief Legal Description BENCH MARK XL15B5 (MEEKLAND AVE. AND SUNSET BOULEVARD.)



## CORNER TYPE

Government Corner ☒ Control ☐  
Meander ☐ Property ☐  
Rancho ☐ Other ☐

Date of Survey 04/28/2017

## COORDINATES (Optional)

N. \_\_\_\_\_ E. \_\_\_\_\_

Elevation 62.32'

Units Metric ☐ U.S. Survey Foot ☒

Horizontal Datum \_\_\_\_\_

Zone \_\_\_\_\_ Epoch Date \_\_\_\_\_

Vertical Datum NGVD29

☐ Complies with Public Resources Code §§8801-8819

☐ Complies with Public Resources Code §§8890-8902

PLS Act Ref.: ☒ 8765(d) ☐ 8771 ☐ 8773 ☐ Other:

Corner/  
Monument: ☐ Left as found ☐ Established ☐ Rebuilt ☒ Pre-Construction  
☐ Found and tagged ☐ Reestablished ☐ Referenced ☐ Post-Construction

Narrative of corner identified and monument as found, set, reset, replaced, or removed:

☒ See sheet #2 for description(s):

*FOUND COUNTY BENCHMARK XL15B5 AND SET TWO CUT "X" REFERENCES FOR TBM'S AS SHOWN ON SHEET 2.*

*LEVEL ACCURACY MEETS OR EXCEEDS CALTRANS THIRD ORDER DIFFERENTIAL LEVEL STANDARDS.*

## SURVEYOR'S STATEMENT

This Corner Record was prepared by me or under my direction in conformance with

the Professional Land Surveyors' Act on MAY 2, 2017.

Signed [Signature] P.L.S. or R.C.E. No. LS 5837



## COUNTY SURVEYOR'S STATEMENT

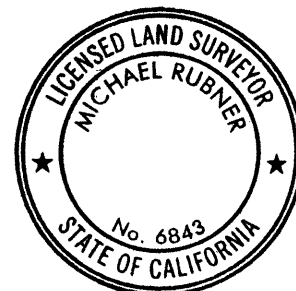
This Corner Record was received 2 MAY, 2017

and examined and filed 5 JUNE, 2017.

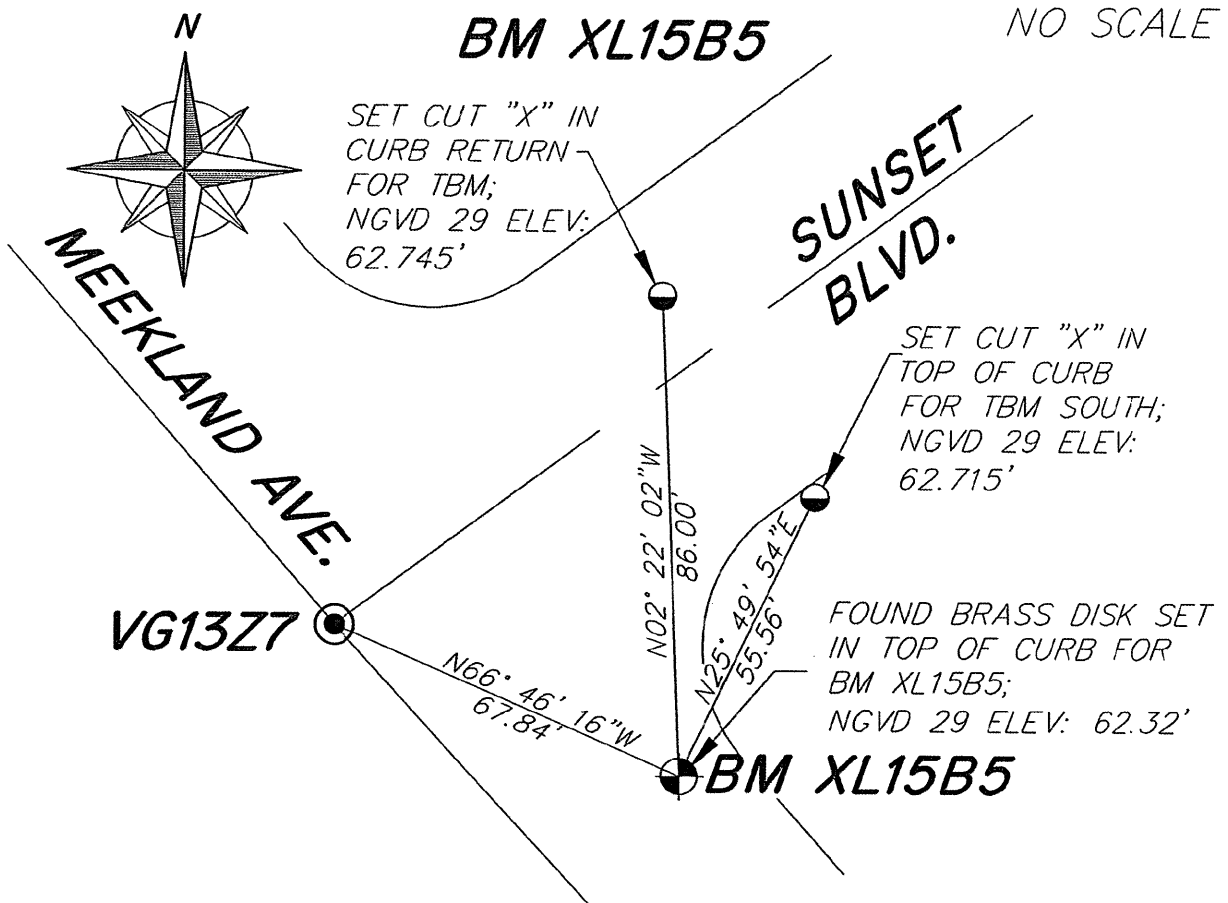
Signed Michael Rubner P.L.S. or R.C.E. No. 6843

Title COUNTY SURVEYOR

County Surveyor's Comment \_\_\_\_\_



*SPEC 2167 R32073*



## LEGEND

- FOUND IRON BAR IN MON WELL
- FOUND BENCH MARK XL15B5;  
BRASS CAP IN TOP OF CURB
- SET CUT "X" FOR TBM UNLESS  
OTHERWISE SHOWN

ACBCM ALAMEDA COUNTY  
BRASS CAP MONUMENT

NOTE THAT BEARINGS ARE APPROXIMATE AND ARE TO BE USED FOR ANGLE CALCULATIONS ONLY.

## PROFILE VIEW-NTS

