

CORNER RECORD

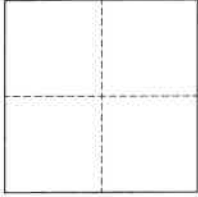
Agency Index BK 150 PG 36
Document Number CR 16345
County of Alameda, California

City of Fremont

Brief Legal Description Intersection of Seville Place and La Jolla Court

CORNER TYPE

COORDINATES (Optional)



- ☐ Government Corner ☒ Control
☐ Meander ☐ Property
☐ Rancho ☐ Other

Date of Survey 2022-05-26

N. _____ E. _____

Elevation _____

Units ☐ Metric ☐ U.S. Survey Foot

Horizontal Datum _____

Zone _____ Epoch Date _____

Vertical Datum _____

☐ Complies with Public Resources Code §§8801-8819

☐ Complies with Public Resources Code §§8890-8902

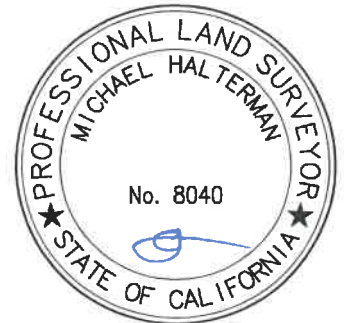
PLS Act Ref.: ☐ 8765(d) ☒ 8771 ☐ 8773 ☐ Other:
Corner/
Monument: ☒ Left as found ☐ Established ☐ Rebuilt ☒ Pre-Construction
☐ Found and tagged ☐ Reestablished ☒ Referenced ☐ Post-Construction

Narrative of corner identified and monument as found, set, reset, replaced, or removed:

☒ See sheet #2 for description(s):

SURVEYOR'S STATEMENT

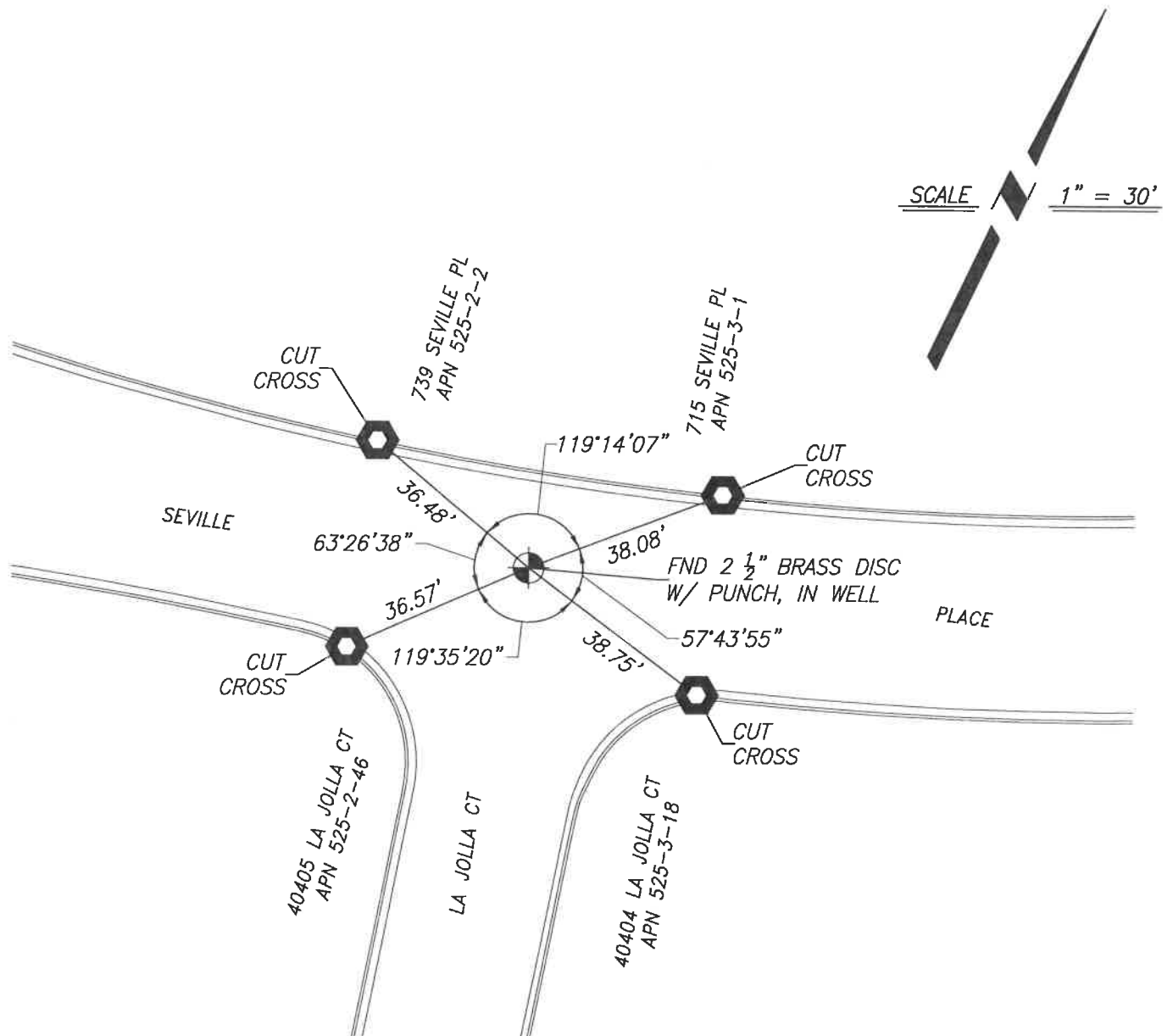
This Corner Record was prepared by me or under my direction in conformance with
the Professional Land Surveyors' Act on December 2, 2022
Signed [Signature] P.L.S. or R.C.E. No. 8040



COUNTY SURVEYOR'S STATEMENT

This Corner Record was received _____
and examined and filed DEC 12 2022
Signed [Signature] P.L.S. or R.C.E. No. 7010
Title ALAMEDA COUNTY SURVEYOR
County Surveyor's Comment _____





REFERENCE

(A) TRACT MAP 2756, FILED ON JULY 11, 1966, IN BOOK 53 OF MAPS PAGES 13-16, ALAMEDA COUNTY RECORDS.

LEGEND



FOUND MONUMENT IN WELL, 2 1/2"
BRASS DISC WITH PUNCH, CITY OF
FREMONT MONUMENT



NAIL IN CONCRETE CURB JOINT AS
REFERENCE, WITHOUT TAG

NOTES

1. ALL REFERENCES ARE ALAMEDA COUNTY RECORDS