

SCREW/FASTENING
DTL.

WATER/AIR BARRIER

PRIMARY LAYER:
FLUID APPLIED WATER
PROOFING AS SPECIFIED
OVER ENTIRE SURFACE OF
EXTERIOR SHEATHING AS
SCHEDULED TO RECEIVE
COMPOSITE DECKING.

SECONDARY LAYER:
15 POUND BUILDING FELT
OVER ENTIRE SURFACE OF
EXTERIOR SHEATHING AS
SCHEDULED TO RECEIVE
COMPOSITE DECKING.

WATER PROOF FLASHING:
4" TITE-SEAL SELF-ADHESIVE
RUBBERIZED ASPHALT ROLL
FLASHING BEHIND EACH BATTEN
(PAINT FLAT BLACK)

MECHANICAL PATCH:
MASTIC OVER ALL MECHANICAL
FASTENERS

CONSTRUCTION

EXTERIOR SHEATHING - REF.
ARCHITECTURAL AND
STRUCTURAL DETAILS

SOLID PVC 1X6 SLEEPER/BATTEN
WHERE BUTT-JOINT FALLS
BETWEEN STUDS **AND/OR** AT END
OF RUN (PAINT FLAT BLACK)

SOLID PVC 1X2 SLEEPER/BATTEN
OVER EACH STUD. (PAINT FLAT
BLACK)

STAINLESS STEEL FINISH SCREWS
REFER SPECIFICATIONS BELOW
AT WOOD STUDS:
PROVIDE 2 1/2" GRIP-RITE (OR
EQUAL) DECK SCREWS -
STAINLESS STEEL, STAR DRIVE

AT METAL STUDS:
PROVIDE 2 1/2" SIMPSON BUGLE HEAD
SELF-DRILLING STAINLESS STEEL - #2
SQUARE DRIVE SCREWS WITH
#3 DRILL POINT (TYPE 410 STAINLESS
STEEL)

1/2" JOINT BETWEEN FINISHED
BOARDS, @ ENDS & @ BUTT
JOINTS - TYPICAL

CONTINUOUS COMPOSITE
INSULATING WALL SHEATHING
WHERE REQUIRED, REF. TO
ARCHITECTURAL WALL SECTIONS

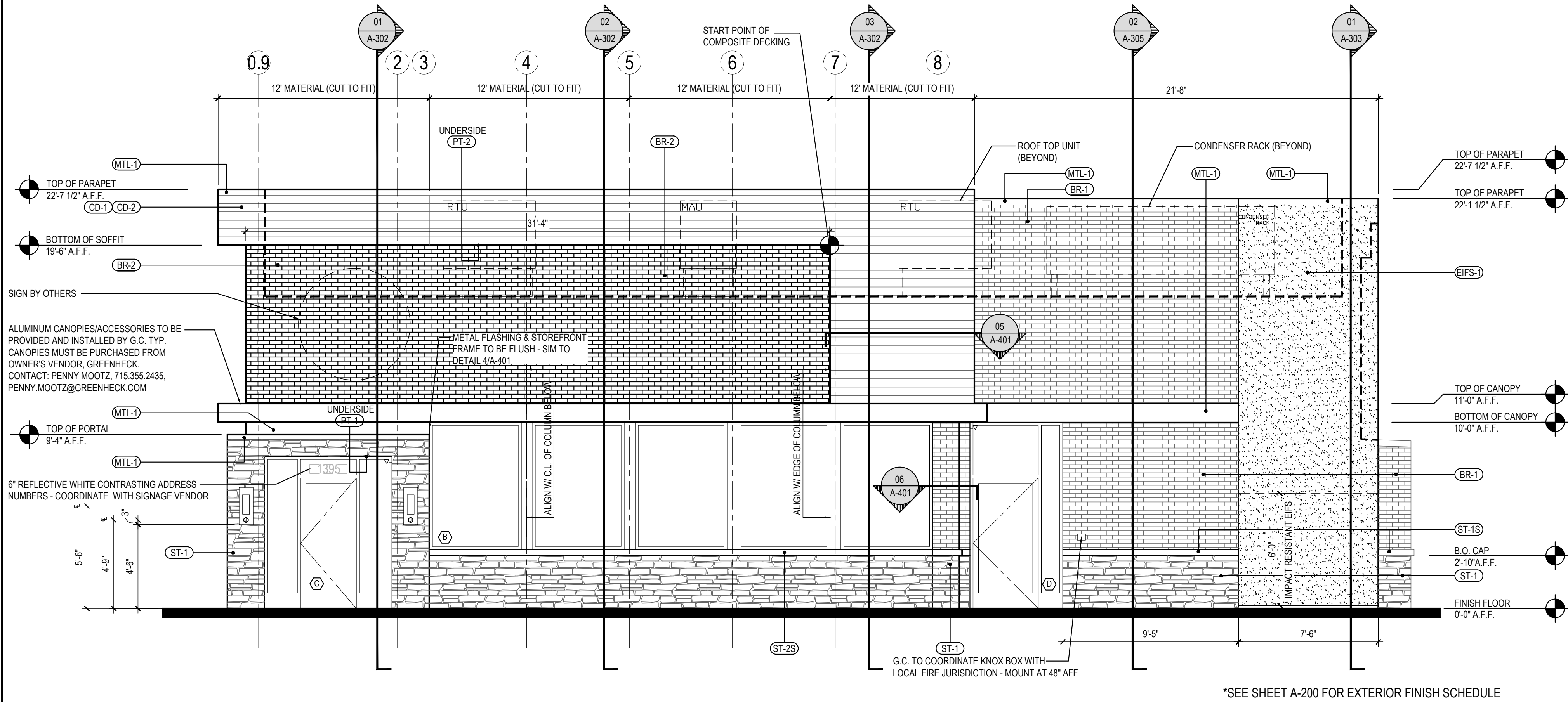
SCREW FASTEN BATTENS@16"
O.C. VERTICALLY

SURFACE MOUNTING FASTENING SYSTEM

COMPOSITE DECK FASTENING & WATER PROOFING DTLs

Scale= 1 1/2" = 1'-0"

3
A-201



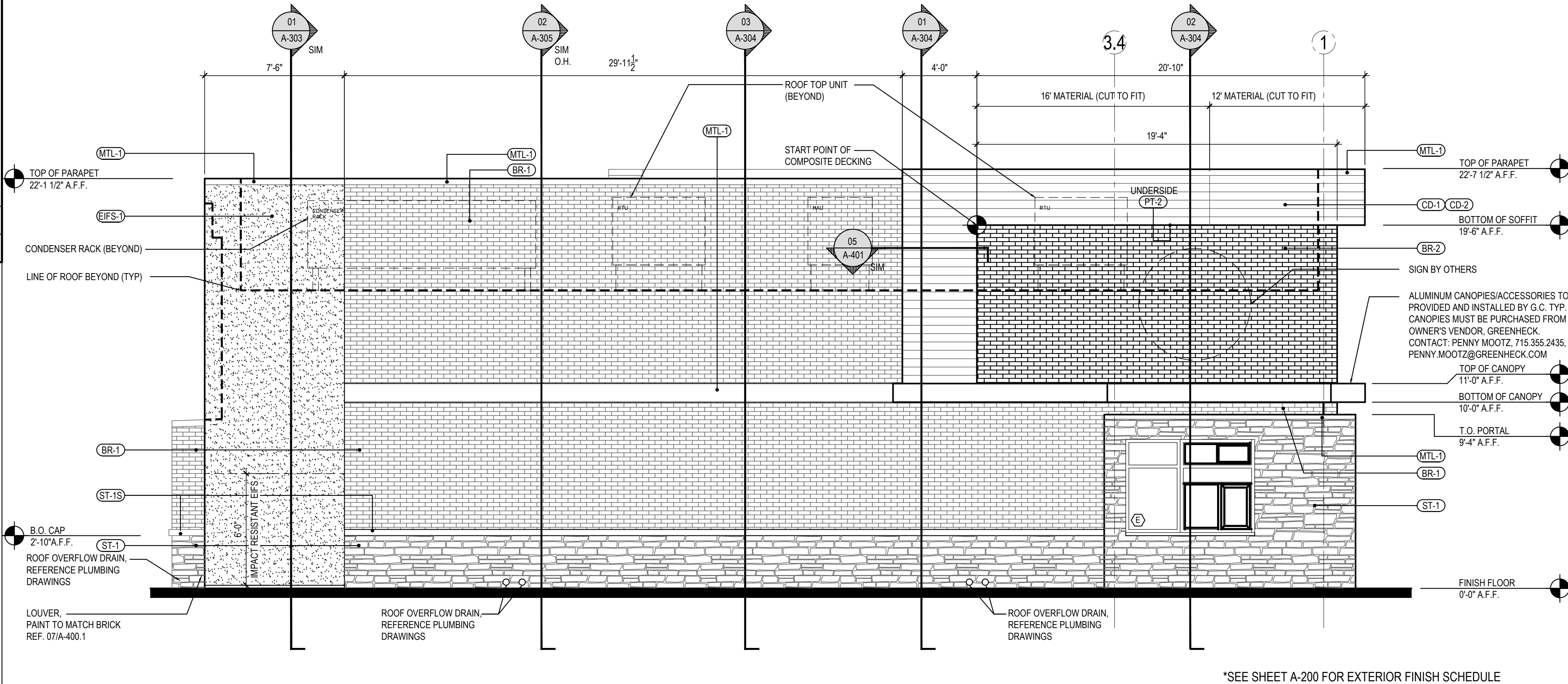
*SEE SHEET A-200 FOR EXTERIOR FINISH SCHEDULE

SOUTH ELEVATION

2

Scale= 1/4" = 1'-0"

A-201



*SEE SHEET A-200 FOR EXTERIOR FINISH SCHEDULE

NORTH ELEVATION

1

Scale= 1/4" = 1'-0"

A-201



PANDA EXPRESS, INC.
1683 Walnut Grove Ave.
Rosemead, California
91770
Telephone: 626.799.9898
Facsimile: 626.372.8288

All ideas, designs, arrangement and plans indicated or
represented by this drawing are the property of Panda
Express Inc. and were created for use on this specific project.
None of these ideas, designs, arrangements or plans may be
used by or disclosed to any person, firm, or corporation
without the written permission of Panda Express Inc.

REVISIONS:

ISSUE DATE:

STATE PERMIT SET 02/10/2021

DRAWN BY: AF

PANDA PROJECT #: D8059

ARCH PROJECT #: JCDT20-0255



NORR
ARCHITECTS PLANNERS

PANDA EXPRESS

TRUE WARM & WELCOME
1395 N. GREEN STREET
BROWNSBURG, IN 46112

A-201

EXTERIOR
ELEVATIONS

TRUE WARM & WELCOME 2300 R4