

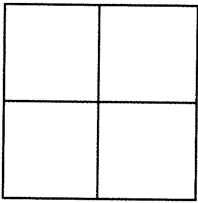
CORNER RECORD

Agency Index

BK 105 PG 40

Document Number

CR 10939

City of BERKELEYCounty of ALAMEDA, CaliforniaBrief Legal Description CITY OF BERKELEY MONUMENT B1223 LOCATED WITHIN THE INTERSECTION OF HALKIN LANE AND ALAMO ST

CORNER TYPE

COORDINATES (Optional)

Government Corner	<input type="checkbox"/>	Control	<input checked="" type="checkbox"/>
Meander	<input type="checkbox"/>	Property	<input type="checkbox"/>
Rancho	<input type="checkbox"/>	Other	<input type="checkbox"/>

N. _____ E. _____

Elevation _____

Units Metric ☐ U.S. Survey Foot ☒

Horizontal Datum _____

Zone _____ Epoch Date _____

Vertical Datum _____

☐ Complies with Public Resources Code §§8801-8819☐ Complies with Public Resources Code §§8890-8902Date of Survey 11/28/17PLS Act Ref: ☐ 8765(d)☒ 8771☐ 8773☐ Other:Corner/
Monument: ☐ Left as found☐ Established☐ Rebuilt☒ Pre-Construction☐ Found and tagged☐ Reestablished☒ Referenced☐ Post-Construction

Narrative of corner identified and monument as found, set, reset, replaced, or removed:

☒ See sheet #2 for description(s) :

FOUND 3/8" BRASS PIN IN MONUMENT WELL. CITY ID B1223

FOUND AND SET POINTS AS SHOWN ON PAGE 2.

THIS POINT WAS REFERENCED PRIOR TO A CONSTRUCTION PROJECT IN THE VICINITY.

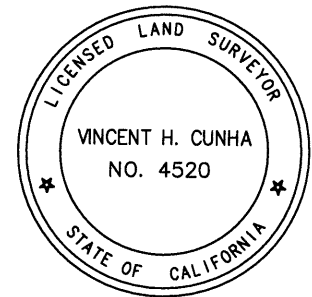
THE TIES SHOWN HEREON ARE FOR THE PURPOSE OF PERPETUATING FOUND MONUMENTATION.
NO CLAIM IS MADE AS TO THE RELATIONSHIP OF THE POINTS OR LINES SHOWN HEREON TO TRUE
BOUNDARY LOCATION.

SURVEYOR'S STATEMENT

This Corner Record was prepared by me or under my direction in conformance with

the Professional Land Surveyors' Act on DECEMBER 6, 2017.Signed VINCENT H. CUNHA P.L.S. No. LS 4520

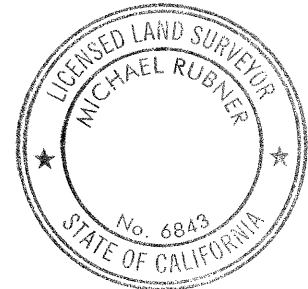
VINCENT H. CUNHA



COUNTY SURVEYOR'S STATEMENT

This Corner Record was received 3 JANUARY, 2018and examined and filed 21 FEBRUARY, 2018.Signed Michael Rubner P.L.S. or R.C.E. No. 6843Title COUNTY SURVEYOR

County Surveyor's Comment

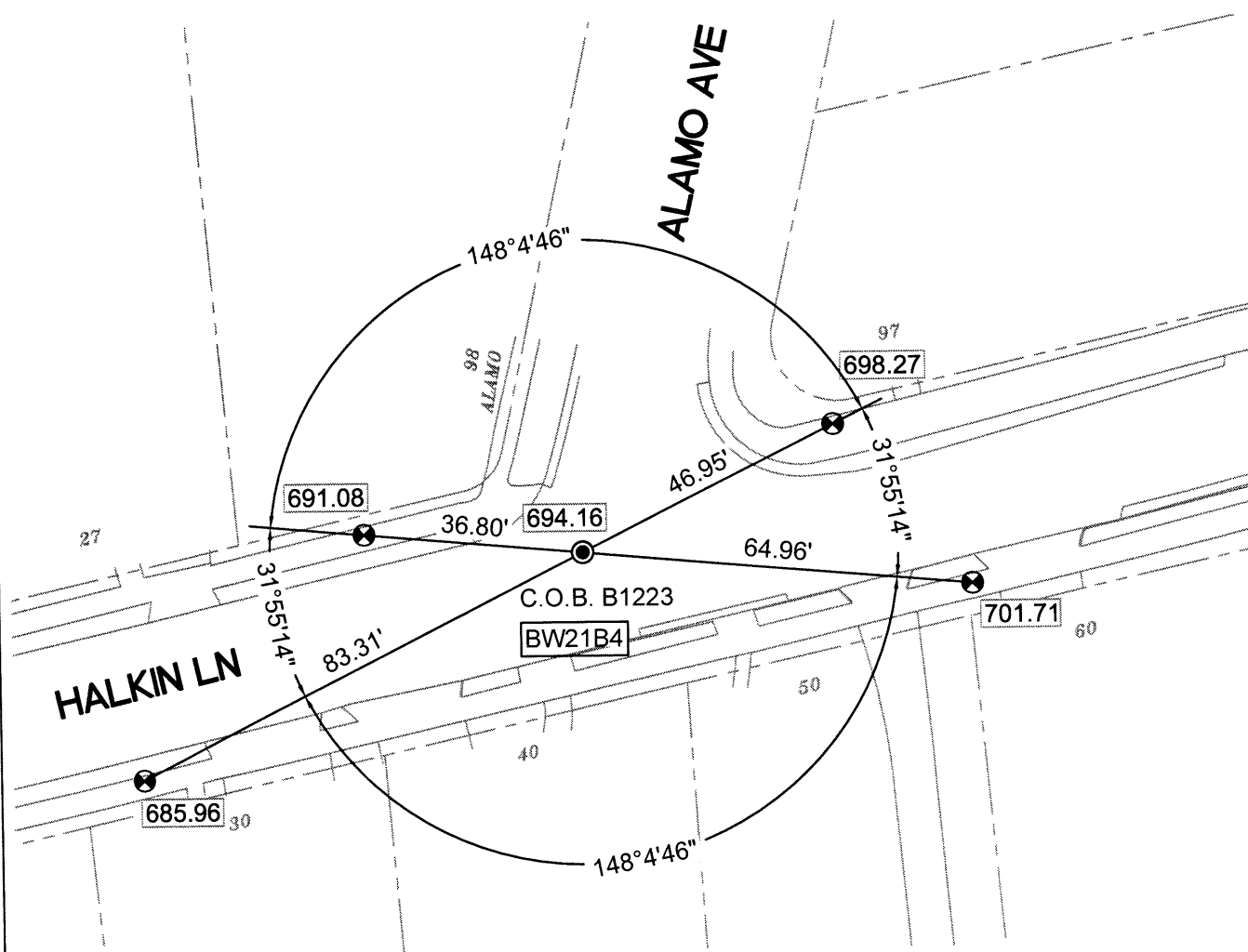


SCALE: 1"=30'

LEGEND

- FOUND 3/8" BRASS PIN CITY MONUMENT
- ⊗ SET CUT CROSS IN WALK
- ✕ SET CUT CROSS IN CURB
- ✕ SET MAG AND SHINER
- SET REBAR & CAP STAMPED "CEI RP"
- C.O.B. CITY OF BERKELEY MONUMENT ID
- AA###A# ALAMEDA COUNTY MONUMENT ID

ELEVATIONS SHOWN HEREON ARE BASED UPON CITY OF BERKELEY VERTICAL DATUM.



217045-D-CR12