

CORNER RECORD

Document Number

County of ALAMEDA, California

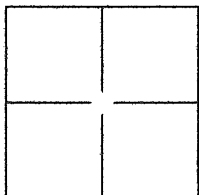
City of OAKLAND

Brief Legal Description LOT 186 OF MAP OF MERRIEWOOD (4 M 50), APN 48G-7436-25

SITE ADDRESS: 6143 VALLEY VIEW ROAD, OAKLAND

CORNER TYPE

COORDINATES (Optional)



Government Corner ☐ Control ☐
Meander ☐ Property ☒
Rancho ☐ Other ☐

Date of Survey NOVEMBER 5, 2008

N. _____
E. _____
Zone _____ NAD27 ☐ NAD83 ☐
NAD83 Epoch _____
Elev. _____
Vert. Datum: NGVD29 ☐ NAVD88 ☐
Meas. Units: Metric ☐ Imperial ☐

Corner - Left as found ☐ Found and tagged ☐ Established ☒ Reestablished ☐ Rebuilt ☐

Identification and type of corner found: Evidence used to identify or procedure used to establish or reestablish the corner:

FOUND CITY MONUMENTS IN VALLEY VIEW ROAD PER MAP OF MERRIEWOOD AS SHOWN ON PAGE 2

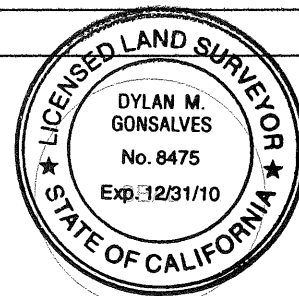
A description of the physical condition of the monument as found and as set or reset:

SET REBAR & CAP PLS 8475 AT LOCATIONS SHOWN ON PAGE 2

SURVEYOR'S STATEMENT

This Corner Record was prepared by me or under my direction in conformance with

the Land Surveyor's Act on DECEMBER 2, 2008.

Signed Dylan M. Gonsalves P.L.S. or R.C.E. No.: 8475

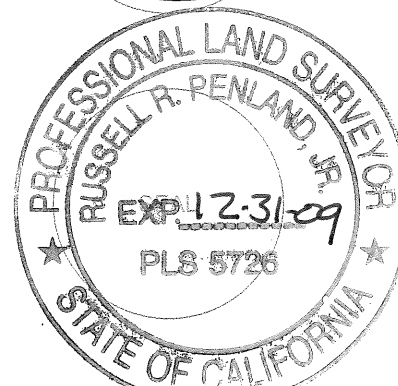
COUNTY SURVEYOR'S STATEMENT

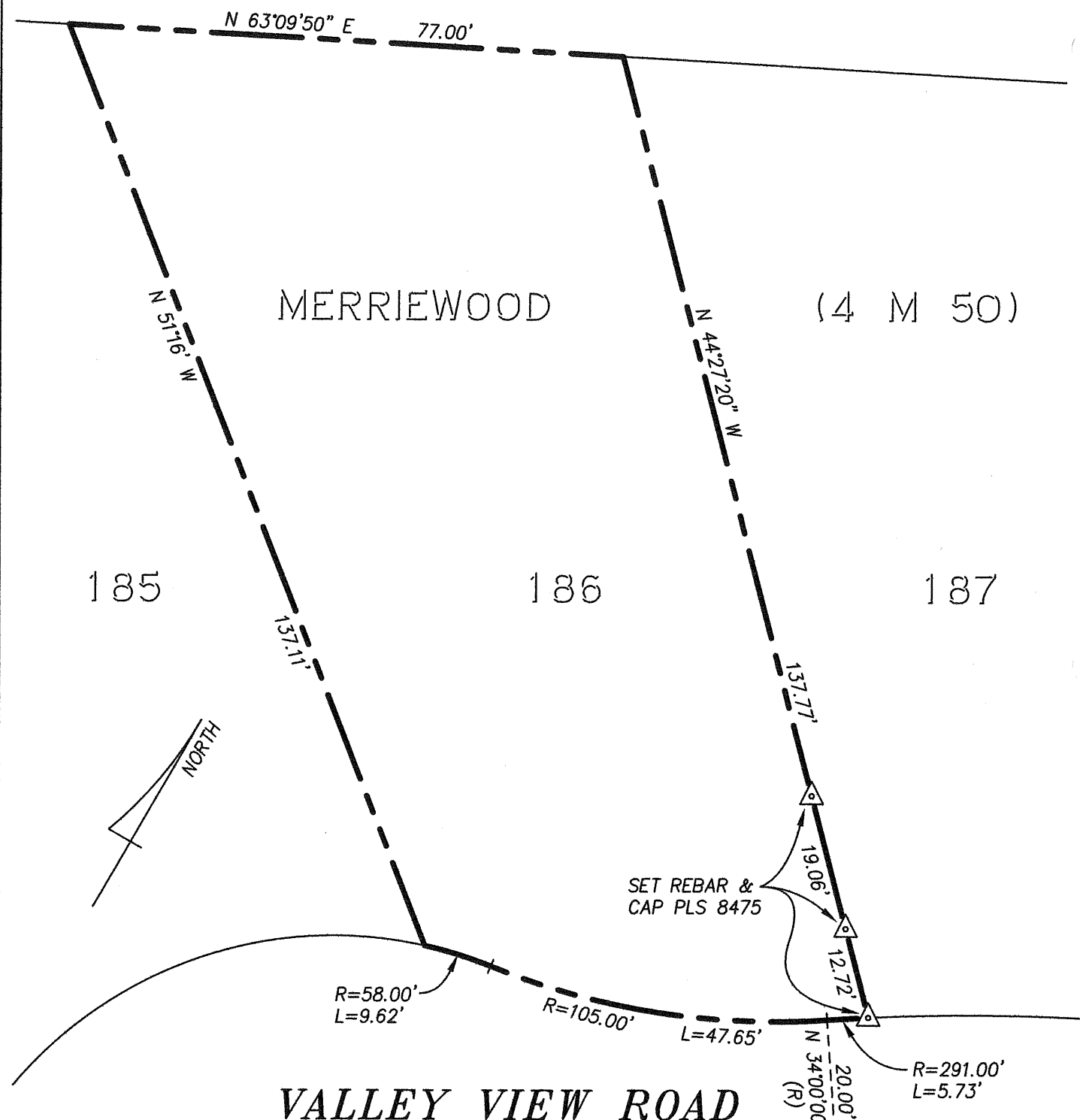
This Corner Record was received 12-22-2008 and examined

and filed 1-25-2009.

Signed Russell R. Penland, Jr. P.L.S. or R.C.E. No.: 5726Title COUNTY SURVEYOR

County Surveyor's Comment





LEGEND

NOTE: DISTANCES AND DIMENSIONS SHOWN HEREON ARE GIVEN IN FEET AND DECIMALS THEREOF.

BOUNDARY ————

MONUMENT LINE ————

TIE LINE - - - - -

FOUND CITY MONUMENT

SET REBAR & CAP PLS 8475

