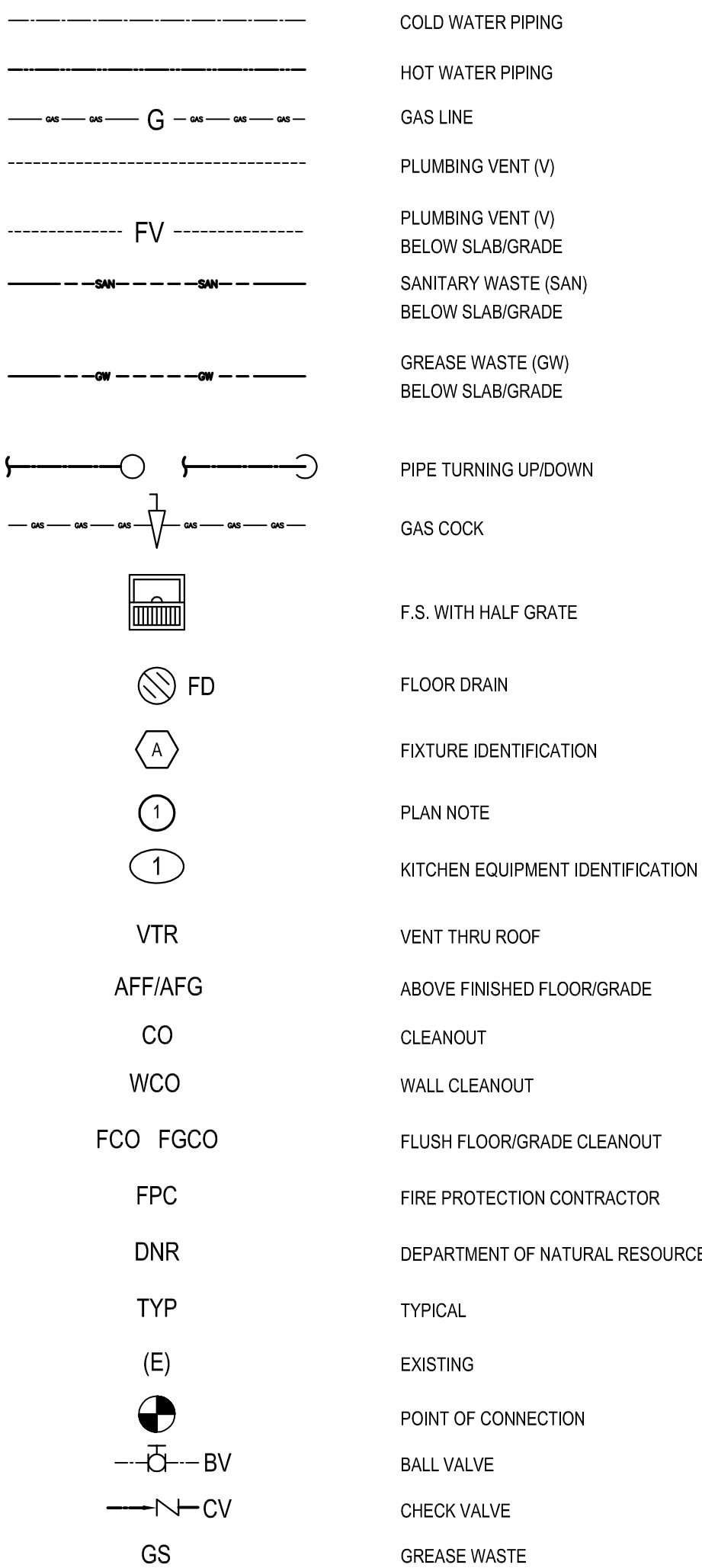


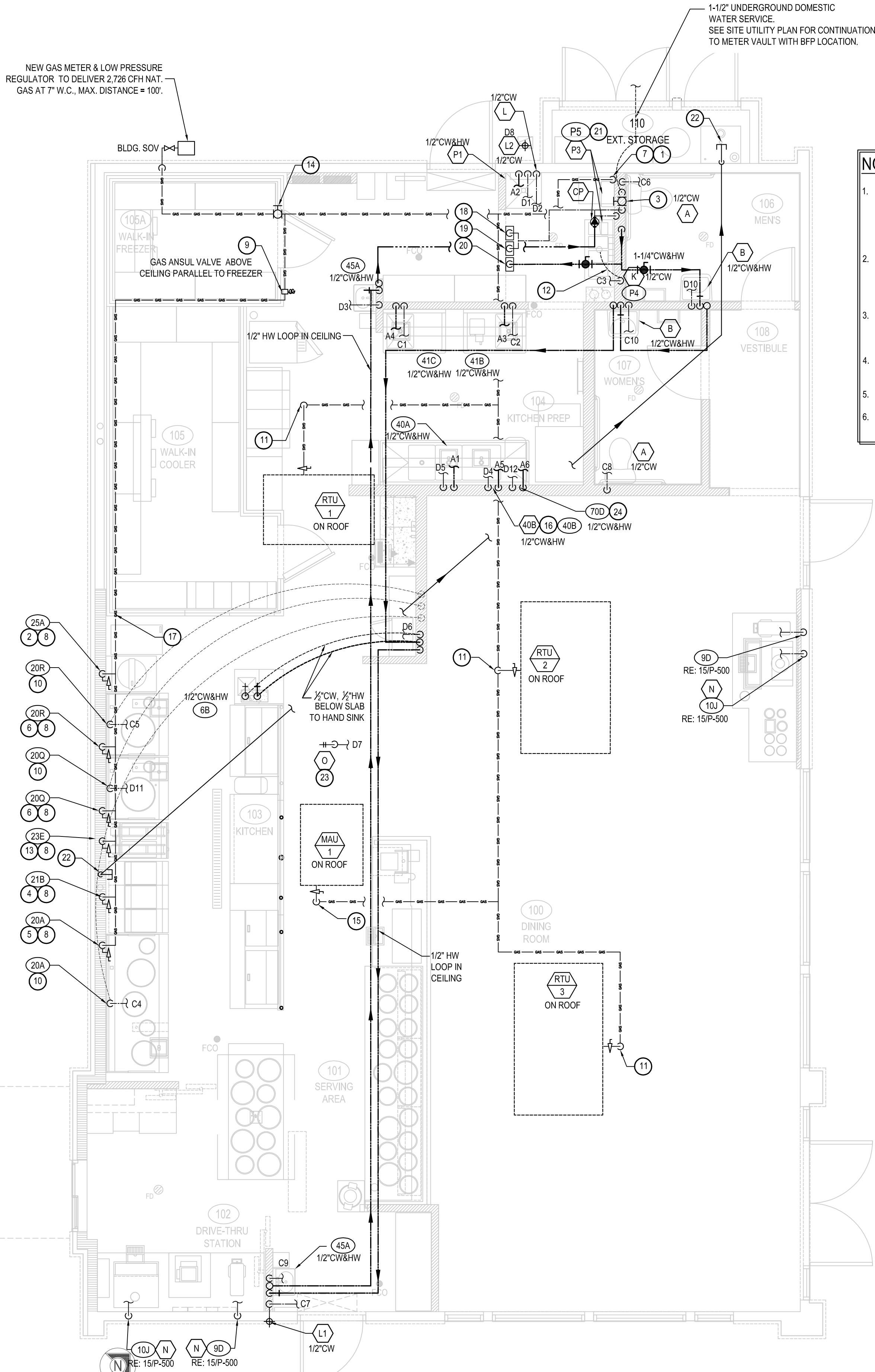
⊙ PLUMBING KEY NOTES

- | | | |
|----------------------------------------------------------------------------------------------------------------------------------------------------------------------------------------------------------------------------------------------------------------------------------------------------------------------------------------------------------------------------------------------------------------------------------------------------------------------------------------------------------------------------------------------------------------------------------------------------------------------------------------------------------------------------------------------------------------------------------------------------------------------------------------------------------------------------------------------------------------------------------------------------------------------------------------------------------------------------------------------------------------------------------------------------------------------------------------------------------------------------------------------------------------------------------------------------------------------------------------------|-------------------------------------------------------------------------------------------------------------------------------------------------------------------------------------------------------------------------------------------------------------------------------------------------------------------------------------------------------------------------------------------------------------------------------------------------|------------------------------------------------------------------------------------------------------------------------------------------------------------------------------------------------|
| <p>WORK INCLUDES CONNECTION OF PLUMBING UTILITIES TO DEVELOPER OR LANDLORD'S UTILITIES AND INSTALLATION OF A COMPLETE PLUMBING SYSTEM WITH PIPES, PROVIDE NEW MATERIALS, FITTINGS, ACCESSORIES, AND EQUIPMENT NECESSARY FOR A COMPLETE AND PROPERLY FUNCTIONING PLUMBING SYSTEM AS SHOWN ON PLANS AND AS REQUIRED. WORK INCLUDES FINAL CONNECTIONS TO EQUIPMENT AND FIXTURES PROVIDED BY OTHERS. FURNISH ALL NEW MATERIALS. WORK SHALL BE PERFORMED BY EXPERIENCED TRADESMAN, AND THEIR WORKMANSHIP SHALL BE HIGH STANDARD, ACCEPTABLE TO OWNER.</p> <p>2. OTHER CODES SHALL BE IN ACCORDANCE WITH ALL CITY, STATE, AND FEDERAL ORDINANCES. PAY FOR ANY PERMITS REQUIRED, AND CALL FOR ANY REQUIRED INSPECTIONS TO BE MADE BY LOCAL AUTHORITIES.</p> <p>3. INTENT OF DRAWINGS IS TO INDICATE GENERAL EXTENT OF WORK REQUIRED FOR PROJECT. DRAWINGS FOR PLUMBING WORK ARE DIAGRAMMATIC, SHOWING GENERAL LOCATION, TYPE, PIPING, FIXTURES AND EQUIPMENT REQUIRED. PROVIDE ALL FITTINGS, ACCESSORIES, AND EQUIPMENT. ALL DIMENSIONS, EXCEPT HEIGHTS OF PLANS, DRAWINGS SHALL NOT BE SCALED FOR EXACT MEASUREMENTS. USE DIMENSIONED ARCHITECTURAL DRAWINGS. REFER TO MANUFACTURER'S STANDARD ROUGH-IN DRAWINGS FOR PLUMBING FIXTURES, AND TO</p> | <p>21. SEE HOT WATER SYSTEM DIAGRAM S/P-5/400</p> <p>22. 3/4" GALVANIZED PIPE, THREADED CAPS AT BOTH ENDS. ROUTE ABOVE CEILING FROM FRYERS TO GREASE STORAGE TANK.</p> <p>• ROUGH-IN HEIGHT AT STORAGE ROOM: 90" AFF</p> <p>• ROUGH-IN HEIGHT AT KITCHEN: 18" AFF</p> <p>• VERTICAL RISE TO ROOF: AS HIGH AS POSSIBLE, BUT NOT TO EXCEED 15" IN HEIGHT</p> <p>• SLOPE OF PIPE TO BE STEEP AS POSSIBLE BUT NO LESS THAN 1/4" PER LINEAR FOOT</p> | <p>23. 1/2" CW UP TO "O" ROOF HYDRANT. LOCATE AND OWNER REQUIREMENTS</p> <p>24. CONNECTIONS TO DISHWASHER TO BE LOCATED UNDER THE DRAIN BOARD OF 3-COMP SINK. SEE DETAIL 7 ON SHEET P-500.</p> |
|----------------------------------------------------------------------------------------------------------------------------------------------------------------------------------------------------------------------------------------------------------------------------------------------------------------------------------------------------------------------------------------------------------------------------------------------------------------------------------------------------------------------------------------------------------------------------------------------------------------------------------------------------------------------------------------------------------------------------------------------------------------------------------------------------------------------------------------------------------------------------------------------------------------------------------------------------------------------------------------------------------------------------------------------------------------------------------------------------------------------------------------------------------------------------------------------------------------------------------------------|-------------------------------------------------------------------------------------------------------------------------------------------------------------------------------------------------------------------------------------------------------------------------------------------------------------------------------------------------------------------------------------------------------------------------------------------------|------------------------------------------------------------------------------------------------------------------------------------------------------------------------------------------------|

PLUMBING SYMBOLS



1. 1-1/4" G DOWN TO WATER HEATER W/ SOV. (SHUT OFF VALVE).
2. (2) 3/4" G DOWN TO REFRIG COOKER W/ SOV. PROVIDE 6" LENGTH OF RIGID PIPE BETWEEN REFRIG COOKER AND FLEXIBLE GAS LINE.
3. CW SHUT OFF BALL VALVE LOCATED WITHIN WALL. REFER ARCH INTERIOR ELEVATIONS FOR HEIGHT. PROVIDE ACCESS PANEL.
4. 1/2" G DOWN TO DEEP FRYER W/ SOV.
5. 1/2" G DOWN TO CHINESE RANGE "20A OR 20B" W/ SOV. LOCATE STUB OUT BEHIND THE END OF RANGE FOR EASY ACCESS.
6. 1" G DOWN TO CHINESE RANGE "200Q" OR "200R" W/ SOV.
7. EXHAUST & INTAKE VENTS UP TO ROOF. COORDINATE WITH MECHANICAL DRAWINGS AND DETAIL #10 ON SHEET P-500.
8. ROUTE NEW PIPING IN WALL.
9. GAS ANSUL VALVE PROVIDED BY OWNER (G.C. CALL CAPTIVEWARE FOR DELIVERY). INSTALL GAS ANSUL VALVE AS CLOSE TO EXTERIOR WALL AS ALLOWED PER LOCAL CODE.
10. 1/2" WATER PIPE UP, VALVE AND CAP.
11. 1" G UP TO ROOF W/ SOV. FOR ROOFTOP UNITS.
12. 1/2" CW TO TRAP PRIMER. PROVIDE WALL ACCESS PANEL. RUN 1/2" CW BELOW FLOOR TO FLOOR DRAIN. SEE DETAIL #17 ON PLAN P-500.
13. 3/4" GAS DOWN FOR EQUIPMENT.
14. SHUT OFF VALVE W/ HANDLE AT 11'-0" ABOVE FINISH FLOOR, EASILY ACCESSIBLE. G.C. TO INSTALL LOCATION INDICATOR STRIKER PROVIDED BY PANDA EXPRESS
15. 1/2" GAS UP TO MAKE-UP AIR UNIT ON ROOF.
16. 1/2" HW & CW TO FAUCET (40B) FOR CHEMICAL FEED SYSTEM. LEFT SIDE PLUMBING ROUGH AT 24" OFF LEFT END OF SINK. SEE DETAIL 7 SHEET P-500
17. GAS HEADER - INSTALL TIGHT TO WALL AND TIGHT TO BOTTOM OF TRUSSES.
18. COLD WATER MANIFOLD "C" BELOW CEILING. REF ARCH ELEVATIONS
19. COLD WATER MANIFOLD "D" BELOW CEILING. REF ARCH ELEVATIONS
20. HOT WATER MANIFOLD "A" BELOW CEILING. REF ARCH ELEVATIONS
21. SEE HOT WATER SYSTEM DIAGRAM 5/P-400
22. 3/4" GALVANIZED PIPE, THREADED CAPS AT BOTH ENDS. ROUTE ABOVE CEILING FROM FRYERS TO GREASE STORAGE TANK.
 - ROUGH-IN HEIGHT AT STORAGE ROOM: 90" AFF
 - ROUGH-IN HEIGHT AT COOKLINE: 18" AFF
 - SLOPE OF LINE AT FRYER LOCATION HIGH AS POSSIBLE, BUT NOT TO EXCEED 15' IN HEIGHT
 - VERICAL OF PIPE TO BE STEEP AS POSSIBLE BUT NO LESS THAN 1/4" PER LINEAR FOOT
23. 1/2" CW UP TO "0" ROOF HYDRANT, LOCATE PER OWNER REQUIREMENTS
24. CONNECTIONS TO DISHWASHER TO BE LOCATED UNDER THE DRAIN BOARD OF 3-COMP SINK. SEE DETAIL 7 ON SHEET P-500.



1. ALL WATER LINES SERVING WATER HEATERS SHALL RUN DOWN FROM CEILING SPACE IN WALL, OFFSET OVER THROUGH WALL 6" BELOW CEILING, ABOVE WATER HEATER, THEN DROP DOWN TO HEATER.
2. AVOID RUNNING WATER VALVES DIRECTLY ABOVE WATER HEATER, TO AVOID DAMAGE TO WATER HEATER CAUSED BY POSSIBLE LEAKS.
3. REFER TO PIPING RISER DIAGRAMS, SHEET P-400 FOR ALL PIPE SIZING NOT SHOWN ON FLOOR PLAN.
4. DO NOT RUN ANY PIPING HORIZONTAL IN WALL SPACE, U.N.O.
5. REFER TO RISER DIAGRAMS, SHEET P-400
6. ALL PEX PIPING TO BE CONTINUOUS FROM MANIFOLD

The logo for Panda Express Chinese Kitchen is a circular emblem. It features a stylized black and white panda in the center, sitting and facing forward. The words "PANDA EXPRESS" are written in a bold, sans-serif font along the top inner edge of the circle. The words "CHINESE KITCHEN" are written in a similar font along the bottom inner edge. Two small dots separate the top and bottom text on the left and right sides.

Telephone: 626.799.9898
Facsimile: 626.372.8288

REVISIONS:

ISSUE DATE:

CHECK SET	04-20-21
BID/PERMIT SET	06-01-21

DRAWN BY: BDG

PANDA PROJECT #: D24956

PANDA STORE #:

ARCH PROJECT #: 239201



SCOTT ROBERT NELSON, P.E.
NC LIC. # 049030

PANDA HOME 2600
50 Kannapolis Parkway
Concord, NC 28027

WATER AND GAS PLAN

PLUMBING FIXTURE SCHEDULE				
FIXTURE	COLD WATER	HOT WATER	WASTE	VENT
WATER CLOSET (HANDICAPPED)	1/2"	--	4"	2"
LAVATORY	1/2"	1/2"	2"	1 1/2"
2 AND 3 - COMP SINK	1/2"	1/2"	3"	2"
HAND SINK	1/2"	1/2"	2"	1 1/2"
MOP SINK (U.S.)	1/2"	1/2"	3"	2"
EQUIPMENT	1/2"	--	--	--
FLOOR DRAIN/SINK	-	-	2" OR 3"	2"

KITCHEN EQUIPMENT SCHEDULE

ITEMS IN THIS SCHEDULE ARE FURNISHED BY THE OWNER (U.N.O.) AND INSTALLED BY THE GENERAL CONTRACTOR UNLESS NOTED OTHERWISE AND CONNECTED TO THE PLUMBING UTILITIES BY THE PLUMBING CONTRACTOR, WHO SHALL INSTALL ALL PLUMBING DEVICES FURNISHED BY EQUIPMENT.

WASTE, FS = FLOOR SINK, OFD = CONDENSATE FLOOR DRAIN, VB = VACUUM BREAKER, FLEX = A SIX FOOT COILED LENGTH OF FOOD QUALITY FLEXIBLE REINFORCED PLASTIC TUBING CONNECTED FROM THE ROUGH IN TO THE EQUIPMENT WITH ALL REQUIRED ADAPTERS AND HOSE CLAMPS.

ALL PIPES MUST MAINTAIN A MINIMUM CLEARANCE OF 6" AFF AND MUST BE WELL SUPPORTED NO FLOOR SUPPORTS ALLOWED.

(4A) SERVING COUNTER MOUNTED SODA MACHINE: IF PROVIDED, SODA MACHINE INSTALLER TO PROVIDE DRAIN LINES FROM ICE BIN AND SODA MACHINE TO FS WITH 1" AIR GAP. DRAIN LINE TO BE INSULATED. WATER TO SODA MACHINE TO BE PROVIDED THROUGH BUNDLE FROM FILTER AND RACK IN KITCHEN BY SODA MACHINE INSTALLER.

(4AB) BEVERAGE COUNTER MOUNTED SODA MACHINE WITH ICE MACHINE: PROVIDE 3/4" COPPER PIPE IW FROM COUNTER TROUGH DRAIN TO FS WITH 1" AIR GAP. INSULATE. WATER TO SODA MACHINE TO BE PROVIDED THROUGH BUNDLE FROM FILTER AND RACK IN KITCHEN BY SODA MACHINE INSTALLER. NO LEGS TO BE INSTALLED. MACHINE TO SET DIRECTLY ON COUNTER.

(P4) WATER FILTER: PROVIDE 3/4" CW AT 96" AFF WITH BV. PROVIDE FLEX AND REDUCED PRESSURE STAINLESS STEEL BACKFLOW PREVENTOR, OR OTHER DEVICE AS REQUIRED BY LOCAL CODE. INSTALL OWNER PROVIDED WATER FILTER AND MAKE CONNECTIONS TO BACKFLOW PREVENTOR AND WATER SUPPLY. PROVIDE ALL REQUIRED FITTINGS TO ALLOW SODA MACHINE INSTALLER TO HOOK UP BOOSTER PUMP TO WATER FILTER. REFER TO DETAIL 15SP-500.

(6B) 22"D REAR COUNTER WITH HAND SINK: PROVIDE 3/4" CW AND 3/4" HW AT 24" AFF AND 8" OC WITH CHROME-PLATED, 7/8" TURN BALL VALVES. CONNECT TO OWNER SUPPLIED FAUCETS WITH METAL FLEX PROVIDE 2" DRAIN PIPE WITH P" TRAP AND WALL MOUNTED CLEAN-OUT. ALL EXPOSED DRAIN PIPES AND FITTINGS TO BE CHROME PLATED. NOT P.V.C.

(9D) ICE TEA MAKER: PROVIDE 3/4" CW AT 24" A.F.F. PROVIDE ALL REQUIRED FITTINGS TO ALLOW ICE TEA INSTALLER TO HOOK UP ONE BV. OTHER BV FOR OTHER EQUIPMENT.

(10J) SODA MACHINE MOUNTED ICE MACHINE. PROVIDE 1/2" CW AT 24" A.F.F. WITH BV. PROVIDE ALL REQUIRED FITTINGS TO ALLOW ICE MACHINE INSTALLER TO HOOK UP ICE MACHINE TO CW.

(20A) CHINESE RANGE: PROVIDE 3/4" CW AT 10" AFF WITH BV. PROVIDE PRESSURE TYPE VB OR OTHER BACKFLOW DEVICE AS REQUIRED BY LOCAL CODE, AND CONNECT TO OWNER SUPPLIED FAUCETS. PROVIDE 2" COPPER PIPE IW TO FS WITH 2" AIR GAP.

(20B) PROVIDE 1/2" GAS SUPPLY AT 9" AFF WITH EASILY ACCESSIBLE SHUT-OFF VALVE. INSTALL OWNER SUPPLIED GAS REGULATOR AND ADJUST GAS LEVEL TO BURNERS.

(20C) CHINESE RANGE: PROVIDE 3/4" CW AT 10" AFF WITH BV. PROVIDE PRESSURE TYPE VB OR OTHER BACKFLOW DEVICE AS REQUIRED BY LOCAL CODE, AND CONNECT TO OWNER SUPPLIED FAUCETS. PROVIDE 2" COPPER PIPE IW TO FS WITH 2" AIR GAP. PROVIDE 1" GAS SUPPLY DOWN TO 9" AFF REDUCE TO 1/2" AT EQUIPMENT CONNECTION WITH EASILY ACCESSIBLE SHUT-OFF VALVE. INSTALL OWNER SUPPLIED GAS REGULATOR AND ADJUST GAS LEVEL TO BURNERS.

(20R) CHINESE RANGE-AUTO WOK: PROVIDE 3/4" CW AT 10" AFF WITH BV. INSTALL OWNER SUPPLIED GAS REGULATOR AND ADJUST GAS LEVEL TO BURNERS. CONTRACTOR TO PROVIDE AND INSTALL THE FOLLOWING:
BACKFLOW DEVICE PER LOCAL CODE
WATER FAUCET (FISHER 30161)
CM LEAD FREE BRASS BALL VALVE
STREAMLINE COPPER-IRON TUBE
2" COPPER PIPE IW TO FS WITH 2" AIR GAP
1" GAS SUPPLY DOWN TO 9" AFF. REDUCE TO 1/2" AT EQUIPMENT CONNECTION WITH EASILY ACCESSIBLE SHUT-OFF VALVE.

(21B) FRYER: PROVIDE 1 1/2" GAS SUPPLY DOWN TO 14" AFF THEN TRANSITION TO 1" WITH 90° ANGLE AND SHUT OFF VALVE. PROVIDE ALL REQUIRED FITTINGS AND INSTALL OWNER SUPPLIED QUICK DISCONNECT FLEXIBLE PIPE AND CONNECT TO UNITS WITH 90° ANGLE. SEE DETAIL ON P-500

(23E) GRIDDLE: PROVIDE 3/4" GAS SUPPLY DOWN TO 20" AFF WITH EASILY ACCESSIBLE SHUT-OFF VALVE. PROVIDE ALL REQUIRED FITTINGS. CONNECT TO UNIT WITH OWNER SUPPLIED QUICK DISCONNECT (3/4"x48", 1) (SWIVEL KIT)

(25A) RICE COOKER: PROVIDE 3/4" GAS SUPPLY AT 30", AND 3/4" GAS SUPPLY AT 10" AFF WITH SHUT OFF VALVES. ONE FOR EACH UNIT. PROVIDE ALL REQUIRED FITTINGS AND INSTALL OWNER SUPPLIED QUICK DISCONNECT FLEXIBLE PIPE AND CONNECT TO UNITS.

(31) WALK-IN COOLER: PROVIDE 1" COPPER PIPE IW FROM DRAIN PAN ON EACH UNIT TO FLOOR DRAIN WITH P" TRAP AND 1" AIR GAP. MOUNT ALL PIPES WITHIN WALK-IN BOX WITH 1" HOLD-OFF SUPPORTS.

(32) WALK-IN FREEZER: PROVIDE 1" COPPER PIPE IW FROM DRAIN PAN ON EACH UNIT TO FLOOR DRAIN WITH P" TRAP AND 1" AIR GAP. MOUNT ALL PIPES WITHIN WALK-IN BOX WITH 1" HOLD-OFF SUPPORTS. PROVIDE HEAT TRACE REFER TO ELECTRICAL DRAWING.

(40A) POT SINK: PROVIDE 3/4" CW AND 3/4" HW AT 14" AFF AND 8" OC WITH BVS & CV. CONNECT TO OWNER SUPPLIED FAUCET WITH COPPER PIPING. PROVIDE 2" COPPER PIPE IW TO FS WITH 2" AIR GAP, OR, IF REQUIRED BY LOCAL CODE, INSTALL 2" COPPER PIPE DIRECTLY TO SEWER SYSTEM. INSTALL OWNER SUPPLIED LEVER DRAIN STOPS. SEE DETAIL ON SHEET P-500.

(40T) THAWING CABINET: 1-DOOR, STAINLESS STEEL GRIDS, 177GA (.670L), 28- 50°F FULLY PRESSED BOTTOM PLATE AND ROUNDED CORNERS. IT IS SUPPLIED WITH 15 AISI 304 GRIDS 2/1 AND THE RACK SUPPORT CAN BE REMOVED WITHOUT TOOLS. THE 3 FACTORY PRESET AND 1 FREE PROGRAMS. BUILT-IN REFRIGERATION UNIT WITH R134 GAS IN REFRIGERATION CIRCUIT. MEETS HACCP REQUIREMENTS. DELIVERED ON WHEELS

(41B) SINGLE BOWL PREP SINK: PROVIDE 3/4" CW AND 3/4" HW AT 14" AFF AND 8" OC WITH BVS. CONNECT TO OWNER SUPPLIED FAUCETS WITH COPPER PIPING. PROVIDE 2" COPPER PIPE IW TO FS WITH 2" AIR GAP, OR, IF REQUIRED BY LOCAL CODE, INSTALL 2" COPPER PIPE DIRECTLY TO SEWER SYSTEM. INSTALL OWNER SUPPLIED LEVER DRAIN STOPS.

(41C) HAND SINK: PROVIDE 3/4" CW AND 3/4" HW AT 24" AFF AND 8" OC WITH CHROME-PLATED, 7/8" TURN BALL VALVES. CONNECT TO OWNER SUPPLIED FAUCETS WITH METAL FLEX PIPING. PROVIDE 2" DRAIN PIPE WITH P" TRAP AND WALL MOUNTED CLEAN-OUT. ALL EXPOSED DRAIN PIPES AND FITTINGS TO BE CHROME PLATED, NOT P.V.C.

(45A) HOT WASHER: HOBART PW10SER ADVANSYS VENTLESS POT/ PAN/ UTENSIL WASHER W/ BOOSTER HEATER. INTERNAL CONDENSING SYSTEM. VENTLESS ENERGY RECOVERY SYSTEM. HOOD NOT REQUIRED. PROVIDE (2) BRASS HOSE BIB @20" AFF. HOT WATER HB WITH RED HANDLE. COLD WATER HB WITH BLUE HANDLE.

(70D) WATER SOFTENER: HOBART WS-40, COMPACT CABINET SOFTENER. PROVIDE WALK-IN COLD WATER SIDE ONLY

(70D1) FILTER AT WATER HEATER ONEFLOW MODEL #0FTWH FILTER SUPPLIED BY PANDA. PROVIDE TRANSITION FITTINGS AT INLET AND OUTLET OF FILTER. SEE DETAIL SP-400

(P5)

PLUMBING KEY NOTES

1.

SODA CONDUIT: PROVIDE 6" PVC CONDUIT BELOW FLOOR FROM THE SIDE OF SODA STORAGE RACK TO SODA DISPENSER PER DETAIL #4 ON SHEET P-500.

2.

CONDENSATE: ROUTE SHARED CONDENSATE LINE THROUGH WALK-IN COOLER. DO NOT RUN THROUGH FLOOR-IN FREEZER. PROVIDE 1" INSULATED CONDENSATE DRAIN PIPE FROM THE EVAPORATIVE COIL. DISCHARGE TO FLOOR SINK OR MOP SINK WITH AIR GAP OF TWICE PIPE DIAMETER. INSTALL AT MINIMUM 76" HEIGHT A.F.F. REFER TO DETAIL #2 ON SHEET P-500.

3.

PROVIDE TRAP PRIMER FOR FLOOR SINK. SEE DETAIL 17/P-500.

4.

RDL & ODL LINES DN. IN WALL. TERMINATE ODL THRU WALL AS CLOSE TO BOTTOM PLATE AS POSSIBLE. EXTEND 1/2" PAST ARCH FINISH. WATER PROOF SEAL ALL AROUND. TERMINATE RDL & ODL WITH 4" PVC LAMB'S TONGUE NOZZLE. COLOR ANTIQUE BRONZE. ARKMAN MODEL #PDN-4. (IF AVAILABLE Tie RD TO STORM SEWER UNDERGROUND)

5.

COMBINATION WASTE/VENT

6.

LAV. TAILPIPE WITH TRAP PRIMER, RUN 2" CW BELOW FLOOR TO FLOOR DRAIN, SEE DETAIL #9 ON PLAN P-500.

7.

(AAV) STUDOR MINI-VENT AIR ADMITTANCE VALVE-INSTALL PER MANUFACTURER'S INSTALLATION INSTRUCTIONS.

8.

WYE WITH CLEANOUT ON TOP.

FIXTURE UNIT SCHEDULE

ITEM	FIXTURE	QTY	WATER FU		SEWER FU	
			EACH	TOTAL	EACH	TOTAL
<div><div></div></div>	WATER CLOSET	2	5	10	4	8
<div><div></div></div>	LAVATORY	2	2	4	1	2
<div><div></div><div></div></div>	FLOOR DRAIN 3" TRAP	4	—	—	5	20
<div><div></div><div></div></div>	FLOOR SINK 3" TRAP	10	—	—	5	50
<div><div></div></div>	MOP SINK	1	3	3	2	2
<div><div></div></div>	FLOOR DRAIN W/ FUNNEL 2" TRAP	2	—	—	3	6
<div><div></div><div></div></div>	HOSE BIBB	3	4	12	—	—
<div><div></div><div></div></div>	TRENCH DRAIN 3" TRAP	2	—	—	5	10
<div><div></div></div>	FILTER SYSTEM	1	1	1	FS	—
<div><div></div></div>	ICE TEA BREWER	2	1	2	FS	—
<div><div></div></div>	400 LB ICE MACHINE	2	1	2	FS	—
<div><div></div></div>	CHINESE RANGE	1	2	2	FS	—
<div><div></div></div>	CHINESE RANGE	2	2	4	FS	—
<div><div></div><div></div></div>	POT SINK (3 COMP.)	1	4	4	FS	—
<div><div></div><div></div></div>	PREP. SINK (1.COMP.)	2	4	8	FS	—
<div><div></div><div></div></div>	HAND SINK (WALL MOUNT)	3	2	6	1	3
<div><div></div></div>	THAWING CABINET	1	-	-	FS	—
<div><div></div></div>	POT WASHER	1	4	4	FS	—
TOTAL			62		101	

FIXTURE UNIT SUMMARY

SERVICE	TOTAL F.U.
DOMESTIC WATER	62
SANITARY SEWER	101

SERVICE REQUIREMENTS

SERVICE	SIZE MAIN	CAPACITY
DOMESTIC WATER	1-1/2 INCH	32 GPM
SANITARY SEWER	4 INCH	101 F.U.
FUEL GAS	3 INCH	2,726 CFH
FIRE PROTECTION	INCH	GPM

WATER PIPE SIZING CHART (COLD WATER)

PIPE SIZE	GPM	VELOCITY FT/SEC	FIXTURE UNITS	
			F - TANK	F - VALVE
1/2"	2.5	3.5	2 F.U. @ psi	6.0 F.U. @ psi
3/4"	6.6	4.4	8 F.U. @ psi	F.U. @ psi
1"	13.4	5.2	19 F.U. @ psi	F.U. @ psi
1-1/4"	23.3	5.9	37 F.U. @ psi	6 F.U. @ psi
1-1/2"	36.7	6.6	74 F.U. @ psi	23 F.U. @ psi
2"	76.4	7.9	254 F.U. @ psi	132 F.U. @ psi

DOMESTIC WATER BACKFLOW PREVENTER MODEL:"WILKINS"975XL SIZE 1-1/2"

** PRESSURE REGULATING VALVE MODEL:" N/A SIZE N/A

WATER PIPE SIZING CHART (HOT WATER)

PIPE SIZE	GPM	VELOCITY FT/SEC	FIXTURE UNITS	
			F - TANK	F - VALVE
1/2"	2.5	3.5	2 F.U. @ psi	F.U. @ psi
3/4"	6.6	4.4	8 F.U. @ psi	F.U. @ psi
1"	13.2	5.0	19 F.U. @ psi	F.U. @ psi
1-1/4"	19.0	5.0	37 F.U. @ psi	6 F.U. @ psi

GREASE INTERCEPTOR CALCULATION

FIXTURE	QTY.	FU	FU TOTAL
FLOOR DRAIN/FLOOR SINK 3" TRAP	8	5	40
TRENCH DRAIN 3" TRAP	1	5	5
MOP SINK	1	2	2
TOTAL			47 (24 GPM)

FIXTURE UNIT VALUE BASED ON IPC, SECTION 709

FLOW THROUGH TYPE GREASE INTERCEPTOR MINIMUM SIZE WILL BE 50 POUND GREASE CAPACITY PER IPC, TABLE 1003.34.1.

GRAVITY TYPE GREASE INTERCEPTOR SIZE BASED ON 24 GPM WITH 30 MINUTE RETENTION TIME (24*30=720) TO BE SIZED AT 1000 GALLONS.

SERVICE	UNDERGROUND	ABOVE GROUND
COLD & HOT WATER	TYPE "K" OR "L" HARD DRAWN COPPER TUBE	PEX
SANITARY WASTE	*SCH. 40 PVC	*SCH. 40 PVC
SANITARY VENT	*SCH. 40 PVC	*SCH. 40 PVC
GAS	—	BLACK STEEL, SCHEDULE 40
INDIRECT DRAIN	—	HARD DRAWN COPPER TUBE TYPE "M"

*SCH. 40 PVC IS PREFERRED IF APPROVED BY AUTHORITY HAVING JURISDICTION.
PROVIDE SCHEDULE 40 PVC FOR ALL WASTE VENT PIPING & FITTINGS.

2" UNDERGROUND VENT FROM GREASE INTERCEPTOR, FOR CONT. SEE SITE UTILITY PLAN.

4" UNDERGROUND GREASE WASTE, FOR CONT. SEE SITE UTILITY PLAN.

CO

RD OD
4" RD & OD
(1150 SQ. FT.)

20R E
3" GW

20Q E
3" GW

4" VTR

2" GW 2" AAV
6B

KITCHEN

RD OD
4" RD & OD
(1150 SQ. FT.)

20A E
3" GW, 2" V

D
3" SS

E1

4AB 1A
3" SS, 2" V

WCO @ 14" A.F.F.

N

105A WALK-IN FREEZER

2" SS 1-1/2" 45A

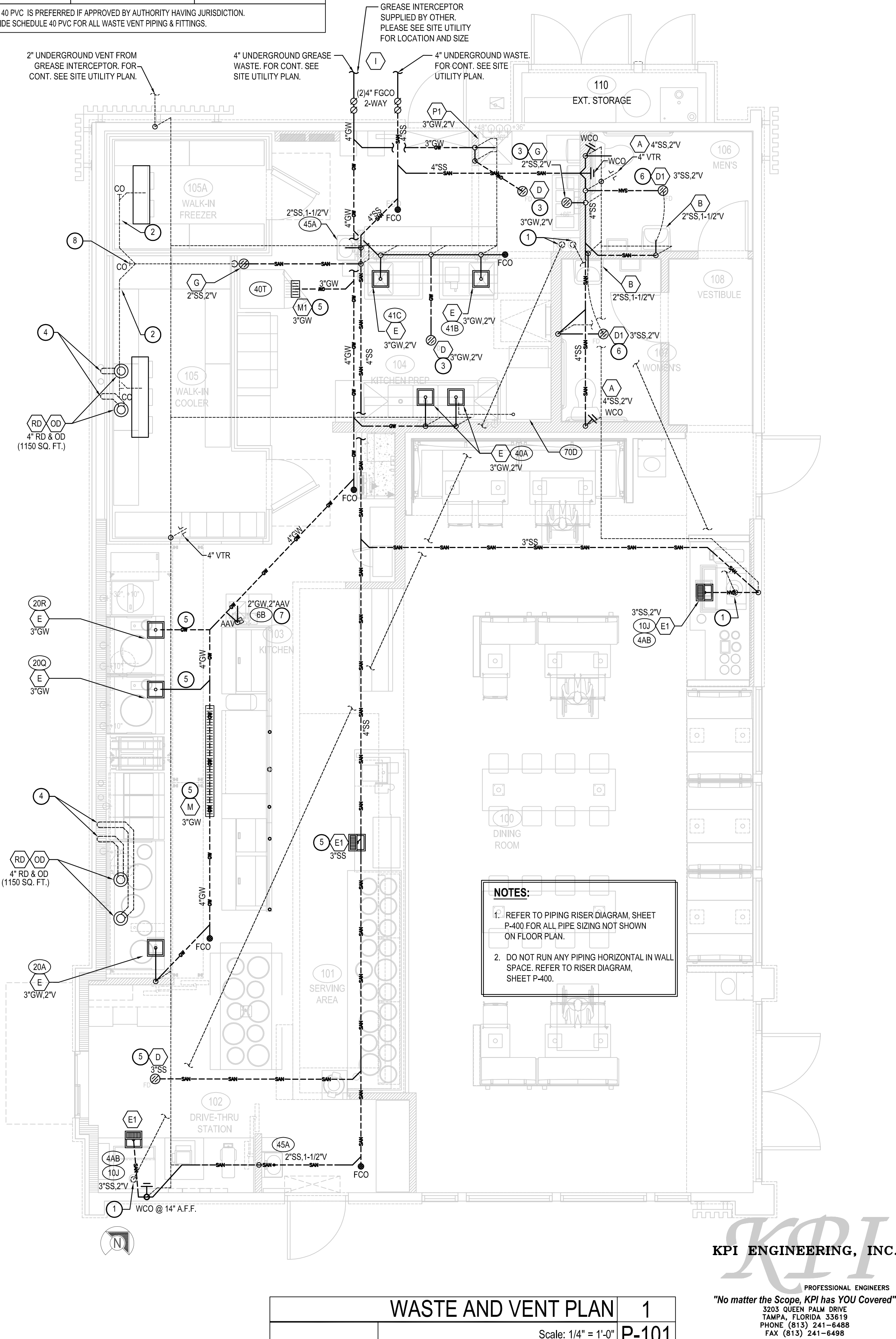
40T M1 5 3" GW

105 WALK-IN COOLER

103 KITCHEN

DRIVE-THRU STATION

45A 2" SS, 1-1/2"



PANDA EXPRESS, INC.
1683 Walnut Grove Ave.
Rosemead, California
91770
Telephone: 626.799.9898
Facsimile: 626.372.8288

All ideas, designs, arrangement and plans indicated or represented by this drawing are the property of Panda Express Inc. and were created for use on this specific project. None of these ideas, designs, arrangements or plans may be used by or disclosed to any person, firm, or corporation without the written permission of Panda Express Inc.

REVISIONS:

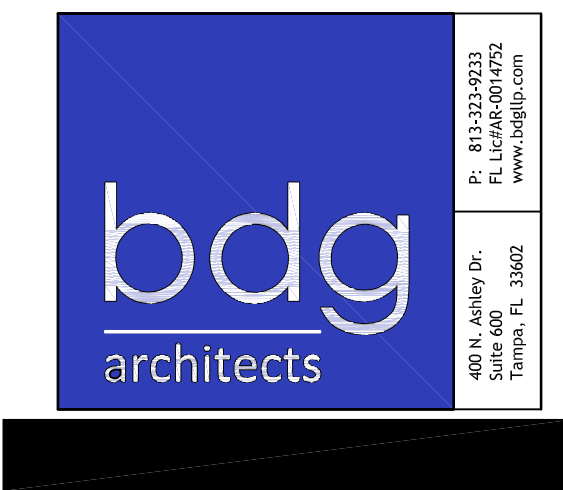
[illegible]

DRAWN BY: BDG

PANDA PROJECT #: D24956

PANDA STORE #: TBD

ARCH PROJECT #: 239201



SCOTT ROBERT NELSON, P.E.
NC LIC. # 049030

PANDA EXPRESS

PANDA HOME 2600
450 Kannapolis Parkway
Concord, NC 28027

P-101

WASTE AND VENT PLAN

PANDA HOME 2600 R3

