

CORNER RECORD

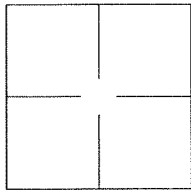
Agency Index BK 139 PG 30

Document Number CR 14580

City of UNINCORPORATED AREA

County of ALAMEDA, California

Brief Legal Description ALAMEDA COUNTY MONUMENT PQ85V6



CORNER TYPE

Government Corner ☐ Control ☐
Meander ☐ Property ☐
Rancho ☐ Other ☒

Date of Survey 2020-07-20

COORDINATES (Optional)

N. _____ E. _____

Elevation _____

Units Metric ☐ U.S. Survey Foot ☐

Horizontal Datum _____

Zone _____ Epoch Date _____

Vertical Datum: _____

☐ Complies with Public Resources Code §§8801-8819

☐ Complies with Public Resources Code §§8890-8902

PLS Act Ref.: ☐ 8765(d) ☒ 8771 ☐ 8773

Other: _____

Corner/
Monument: ☒ Left as found ☐ Established ☐ Rebuilt ☒ Pre-Construction
☐ Found and tagged ☐ Reestablished ☒ Referenced ☐ Post-Construction

Narrative of corner identified and monument as found and set or reset:

☒ See sheet #2 for description(s):

ALAMEDA COUNTY MONUMENT PQ85V6

SURVEYOR'S STATEMENT

This Corner Record was prepared by me or under my direction in conformance with

the Professional Land Surveyor's Act on 30 November, 2020.

Signed [Signature] P.L.S. or R.C.E. No.: 8040



COUNTY SURVEYOR'S STATEMENT

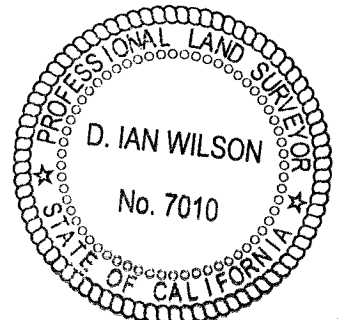
This Corner Record was received _____, _____ and examined

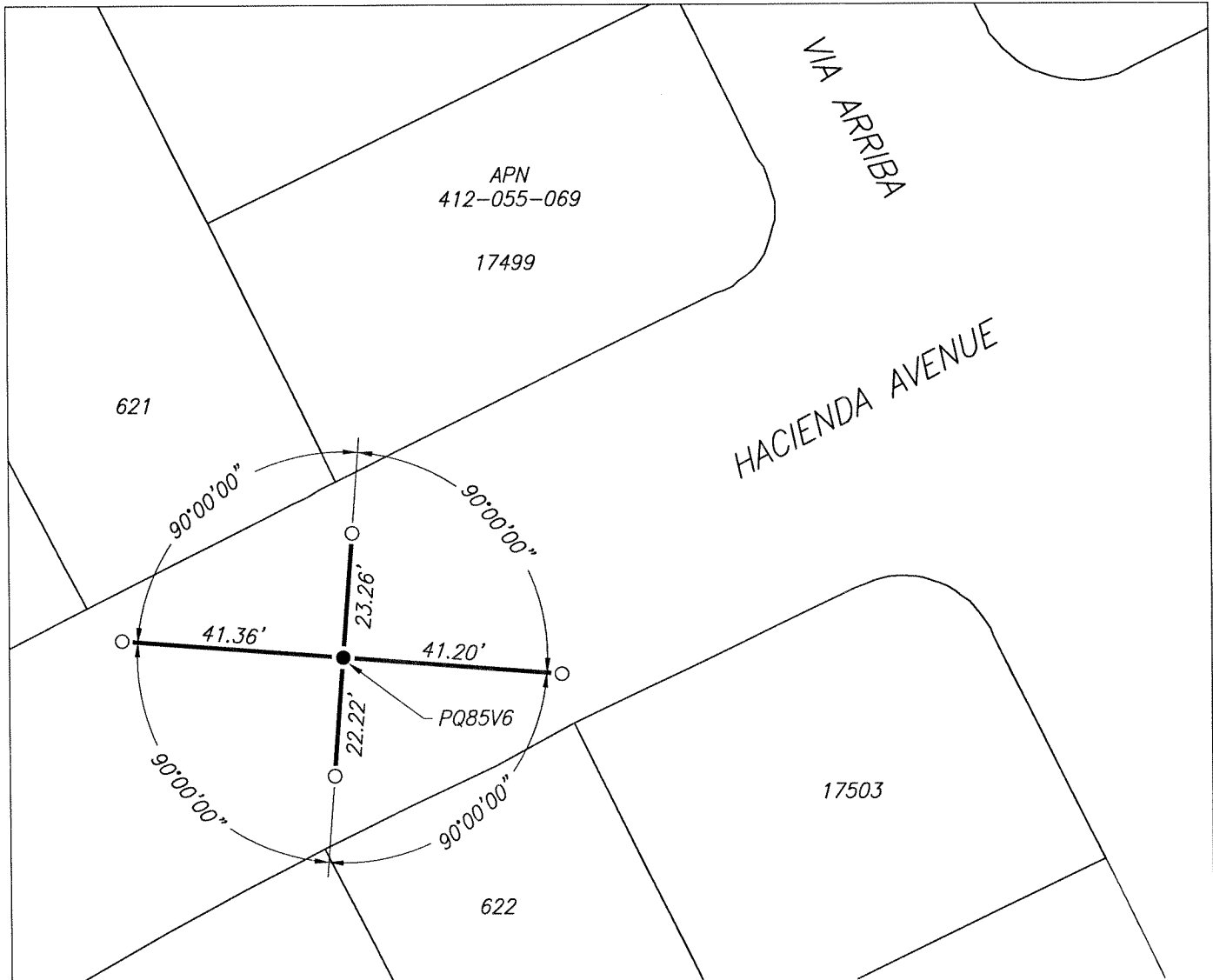
and filed AUG 14 2021.

Signed D. Ian Wilson P.L.S. or R.C.E. No.: 7010

Title ALAMEDA COUNTY SURVEYOR

County Surveyor's Comment





LEGEND

- FOUND 2.5" BRASS DISK IN CONCRETE, IN MONUMENT WELL, WITH PUNCH, STAMPED "ALAMEDA COUNTY SURVEYOR", PER (A)
- SET CUT CROSS IN CONCRETE
- 622 REFERENCE STREET ADDRESS
- APN ASSESSORS PARCEL NUMBER

REFERENCES

- (A) CORNER RECORD 11224 FILED FOR RECORD ON JUNE 18, 2018, IN BOOK 108 OF CORNER RECORDS, AT PAGE 27, ALAMEDA COUNTY RECORDS

SCALE  1" = 30'