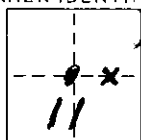


# CORNER RECORD

COUNTY OF MONO T. 9 N R. 22 E M.D.B. & MERIDIAN CALIFORNIA  
 CORNER TYPE: GOV'T. CORNER ☐ MEANDER ☐ RANCHO ☐ CONTROL ☐ OTHER ☒  
 CORNER IDENTIFICATION - DATE OF VISIT 18 Oct. 19 85



C-E 1/16 S-11

CORNER - LEFT AS FOUND ☒ FOUND AND TAGGED ☐ REESTABLISHED OBLITERATED CORNER ☐ REBUILT ☐

PHYSICAL DESCRIPTION OF CORNER FOUND: EVIDENCE AND METHOD USED TO IDENTIFY OR REESTABLISH Found in good  
cond., LS 3294 Plastic Plug Cap in 1" o.d. IP, 0.3" t above gnd, in cen. of  
2" dia. rock mod., 5' E of fence line, 45' E of & Hwy 395, 125' S  
of dirt road driveway, 0.1 mi. S. of Jct Hwy 89

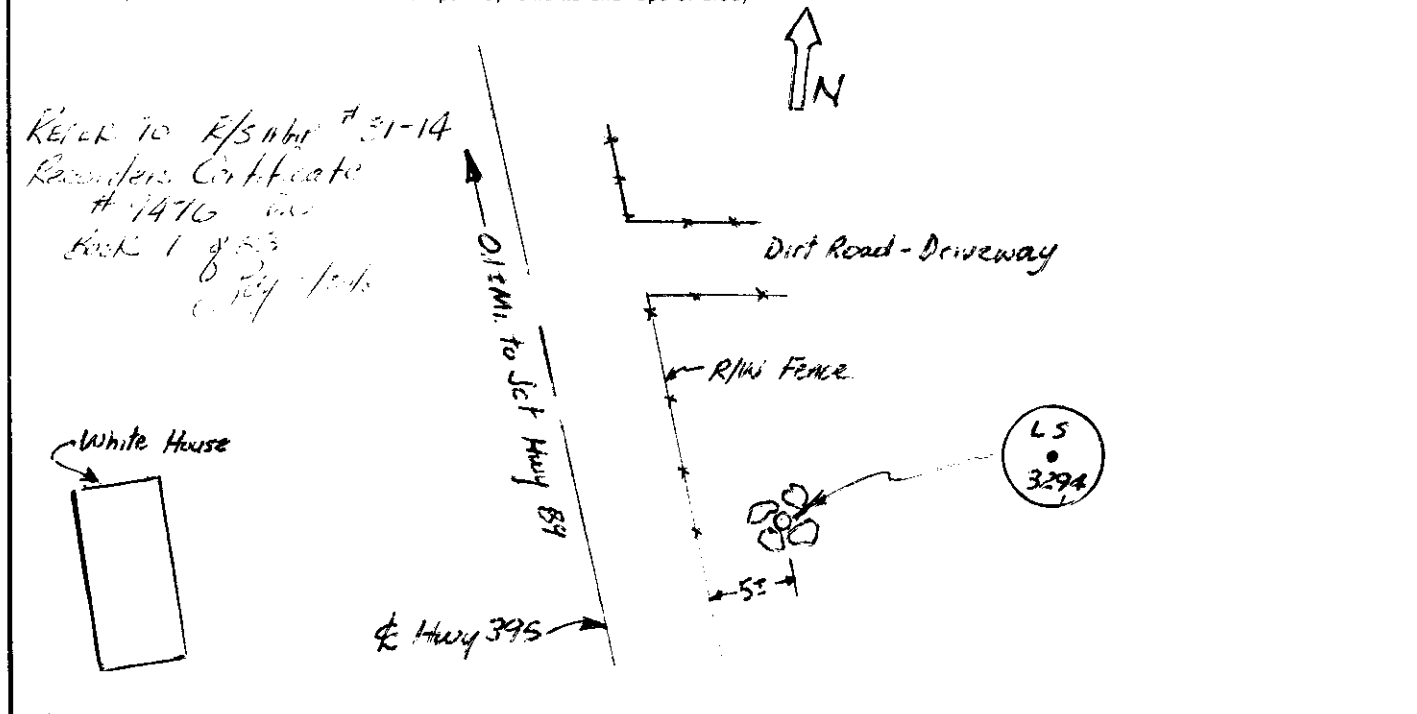
PHYSICAL DESCRIPTION OF MONUMENTS REBUILT OR PERPETUATED

Photos (09200 215301) 110 Camera Roll #1 - Exp #11 - Close up facing West  
Exp #12 - from 25' E, looking W with Hwy 395 in background.

CALIFORNIA COORDINATE SYSTEM ORDER: FIRST ☐ SECOND ☐ THIRD ☐

STATIONS USED: NGS (USC & GS) ☐ STATE ☐ COUNTY ☐ OTHER ☐ STATION \_\_\_\_\_ STATION \_\_\_\_\_  
 ZONE \_\_\_\_\_ ELEVATION \_\_\_\_\_ NORTHINGS (Y) \_\_\_\_\_ EASTINGS (X) \_\_\_\_\_

SKETCH: (Include reference tie or witness points, remarks and topo of area)



## SURVEYOR'S CERTIFICATE

THIS CORNER RECORD WAS PREPARED BY ME OR UNDER MY  
 DIRECTION IN CONFORMANCE WITH THE LAND SURVEYORS ACT  
 ON 18 Oct 85 19 85

SIGNED: M. J. Allstead

LS - P.G.E. No.: Caltrans P.C.

SEAL

## COUNTY SURVEYOR'S CERTIFICATE

THIS CORNER RECORD WAS RECEIVED 11/15 19 85  
 AND EXAMINED AND FILED 11/15 19 85

BY: Richard Boardman

TITLE: \_\_\_\_\_

DOCUMENT No. \_\_\_\_\_

STATEMENT ON BACK OF SHEET

YES ☐ NO ☒