

PARCEL MAP 4044

FOR CONDOMINIUM PURPOSES
CITY OF FREMONT · ALAMEDA COUNTY · CALIFORNIA

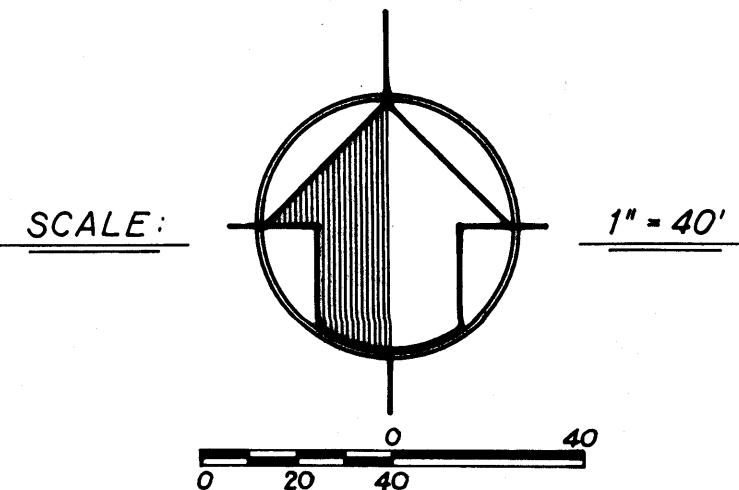
CONSISTING OF 2 SHEETS

CREEGAN & D'ANGELO

CONSULTING ENGINEERS
FREMONT, CALIFORNIA 94538

SCALE: 1" = 40'

AUGUST, 1984

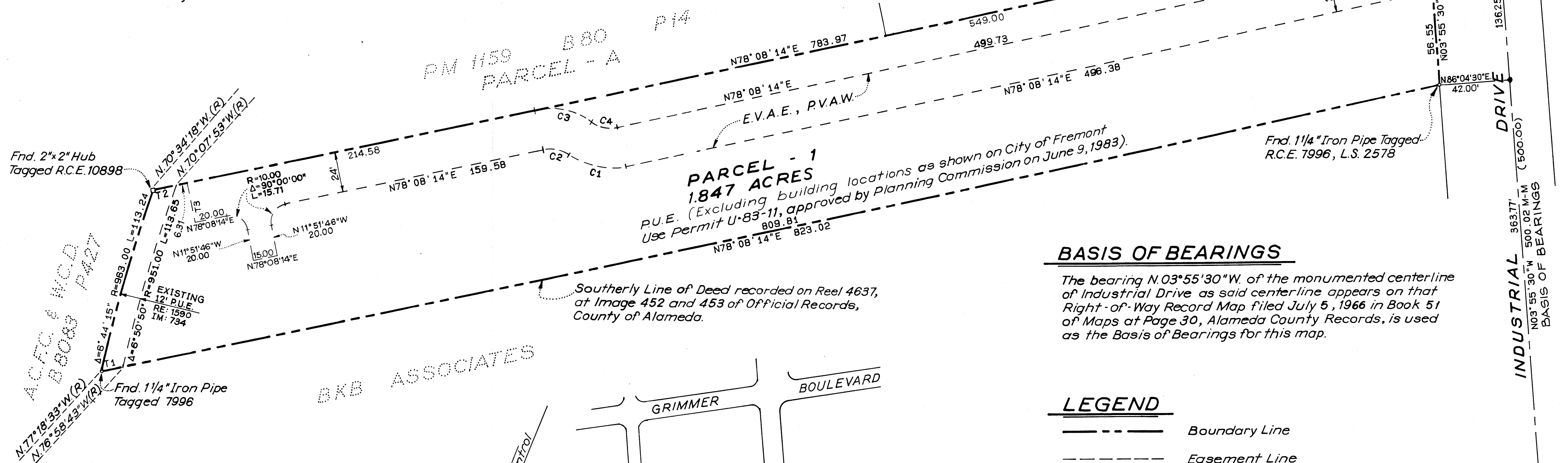


Note:
Building locations to be
as per Use Permit U-83-11
approved by Planning
Commission June 9, 1983.

USE WITH CAUTION
THIS IS A PUBLIC WORKS DEPARTMENT
WORKING COPY OF AN OFFICIAL MAP
ON FILE IN THE OFFICE OF THE COUNTY
RECORDER, COUNTY OF ALAMEDA. OF-
FICIAL INFORMATION OR CALCULATIONS
MAY HAVE BEEN ADDED HEREON.

DESCRIPTION

Being a portion of the land of David E. Greer conveyed
by Deed, recorded December 10, 1976, Reel 4637, Image 452,
Alameda County Records.



PARCEL - 1
1.847 ACRES

P.U.E. (Excluding building locations as shown on City of Fremont
Use Permit U-83-11, approved by Planning Commission on June 9, 1983).

Southerly Line of Deed recorded on Reel 4637,
at Image 452 and 453 of Official Records,
County of Alameda.

BASIS OF BEARINGS

The bearing N 03° 55' 30" W. of the monumented centerline
of Industrial Drive as said centerline appears on that
Right-of-Way Record Map filed July 5, 1966 in Book 51
of Maps at Page 30, Alameda County Records, is used
as the Basis of Bearings for this map.

LEGEND

- Boundary Line
- - - Easement Line
- Centerline
- Found 1 1/4" Iron Pipe
- ◻ Found 2" x 2" Hub
- + Found Chiseled
- P.U.E. Public Utility Easement
- () Record Data
- E.V.A.E. Emergency Vehicle Access Easement
- P.V.A.W. Private Vehicle Access Way

NO.	DELTA	RADIUS	LENGTH
C1	46° 34' 03"	44.00	35.76
C2	46° 34' 03"	20.00	16.26
C3	46° 34' 03"	44.00	35.76
C4	46° 34' 03"	20.00	16.26

NO.	BEARING	DISTANCE
T1	N78° 08' 14" E	13.21
T2	N78° 08' 14" E	14.08
T3	N11° 51' 46" W	24.00
T4	N03° 55' 30" W	24.23

VICINITY MAP

NO SCALE

filed 2-13-85

152/19

152/19

PM 4044

MAP BK 152 PG 19