

General Information

Location: Santa Rosa Ecu
IATA Code:
Lat/Long: S03° 26.1667' W079° 59.0333'
Elevation: 23 ft

Airport Use: Public
Magnetic Variation: 1.1°W

Fuel Types: Jet A-1
Customs: No
Airport Type: IFR
Landing Fee: No
Control Tower: Yes
Jet Start Unit: No
LLWS Alert: No
Beacon: No

Sunrise: 1113 Z
Sunset: 2318 Z,

Runway Information

Runway: 07
Length x Width: 8104 ft x 148 ft
Surface Type: asphalt
TDZ-Elev: 23 ft

Runway: 09
Length x Width: 2986 ft x 59 ft
Surface Type: asphalt
TDZ-Elev: 10 ft

Runway: 25
Length x Width: 8104 ft x 148 ft
Surface Type: asphalt
TDZ-Elev: 23 ft

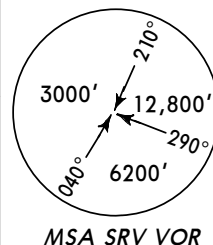
Runway: 27
Length x Width: 2986 ft x 59 ft
Surface Type: asphalt
TDZ-Elev: 10 ft

Communication Information

Santa Rosa Tower 122.9
Santa Rosa Ground Control 121.9
Santa Rosa Approach Control 118.55
Santa Rosa TMA 118.55

Apt Elev
23'

Trans level: FL030 Trans alt: 3000'



ANDEL DEPARTURE [ANDEL] (RWY 07)

ANDEL
D20 SRV
S03 07.0
W079 58.4

SANTA ROSA
D 116.6 SRV
S03 26.8 W080 00.6



068°
hdg

D5 SRV
S03 24.9
W079 56.0

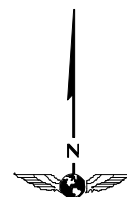
At or above
700'

This SID requires take-off minimums:
Ceiling 100m, Visibility 1.6 km and a minimum
climb gradient of 3.3% (201' per NM).

Gnd speed-KT	75	100	150	200	250	300
3.3% V/V (fpm)	251	334	501	668	835	1003

Altitude at distance from SRV.

SRV DME	2	3	4	5
ALTITUDE	120	320	520	720



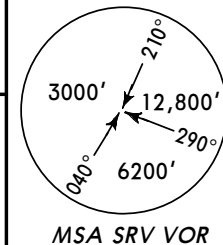
NOT TO SCALE

INITIAL CLIMB

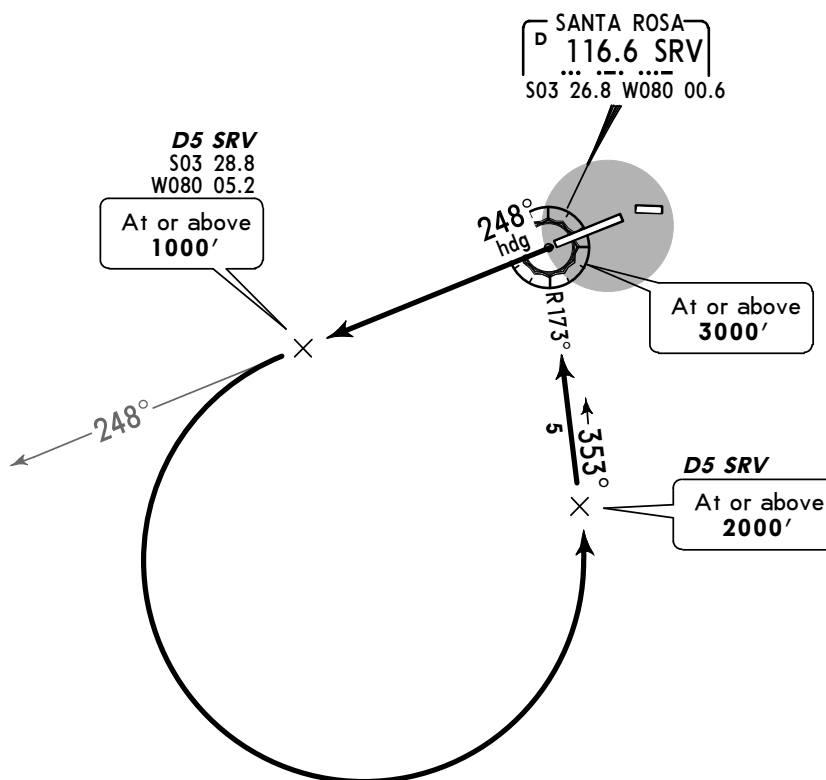
After take-off, **MAINTAIN** heading 068° (SRV R-068) until reaching **700'** to D5 SRV, turn
LEFT to intercept SRV R-007 to ANDEL while climbing to **FL030** or proceed in accordance
with ATC instructions.

Apt Elev
23'

Trans level: FL030 Trans alt: 3000'



SANTA ROSA (VOR) DEPARTURE
[SRV]
(RWY 25)



This SID requires take-off minimums:
Ceiling 100m, Visibility 1.6 km.
MAINTAIN climb gradient of 5.0% to the TMA limit.

Gnd speed-KT	75	100	150	200	250	300
5.0% V/V (fpm)	380	506	760	1013	1266	1519

Altitude at distance from SRV.

SRV DME	0	1	2	3	4	5
ALTITUDE	70	374	678	982	1286	1590

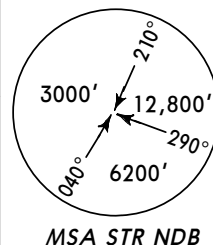


INITIAL CLIMB

After take-off, **MAINTAIN** heading 248° (SRV R-248) until reaching **1000'** and D5 SRV, turn LEFT and intercept track 353° (SRV R-173) at D5 SRV, continue climbing to SRV, then proceed in accordance with ATC instructions.

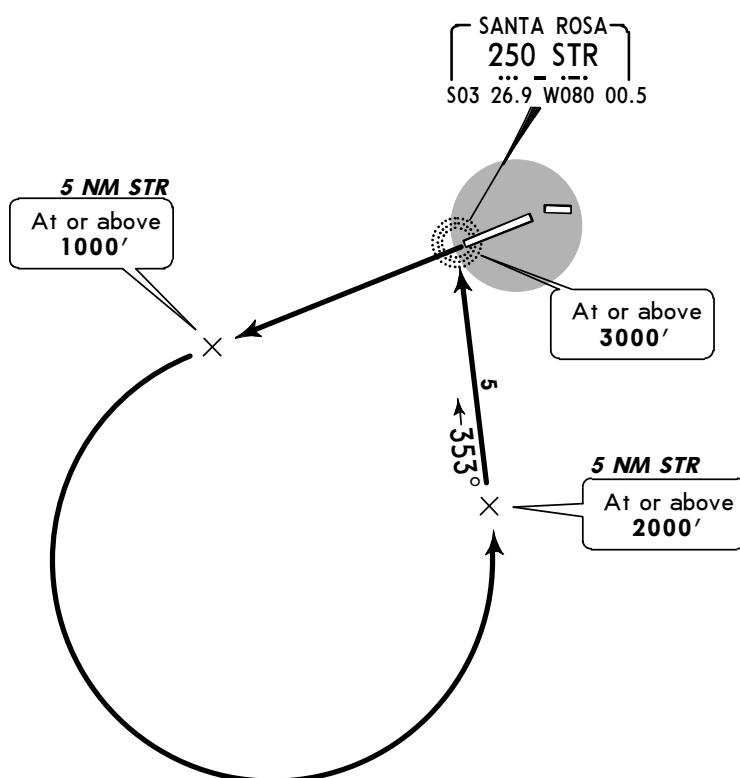
Apt Elev
23'

Trans level: FL030 Trans alt: 3000'



SANTA ROSA (NDB) DEPARTURE

[STR]
(RWY 25)



This SID requires take-off minimums:
Ceiling 100m, Visibility 1.6 km.

MAINTAIN climb gradient of 5.0% to the TMA limit.

Gnd speed-KT	75	100	150	200	250	300
5.0% V/V (fpm)	380	506	760	1013	1266	1519



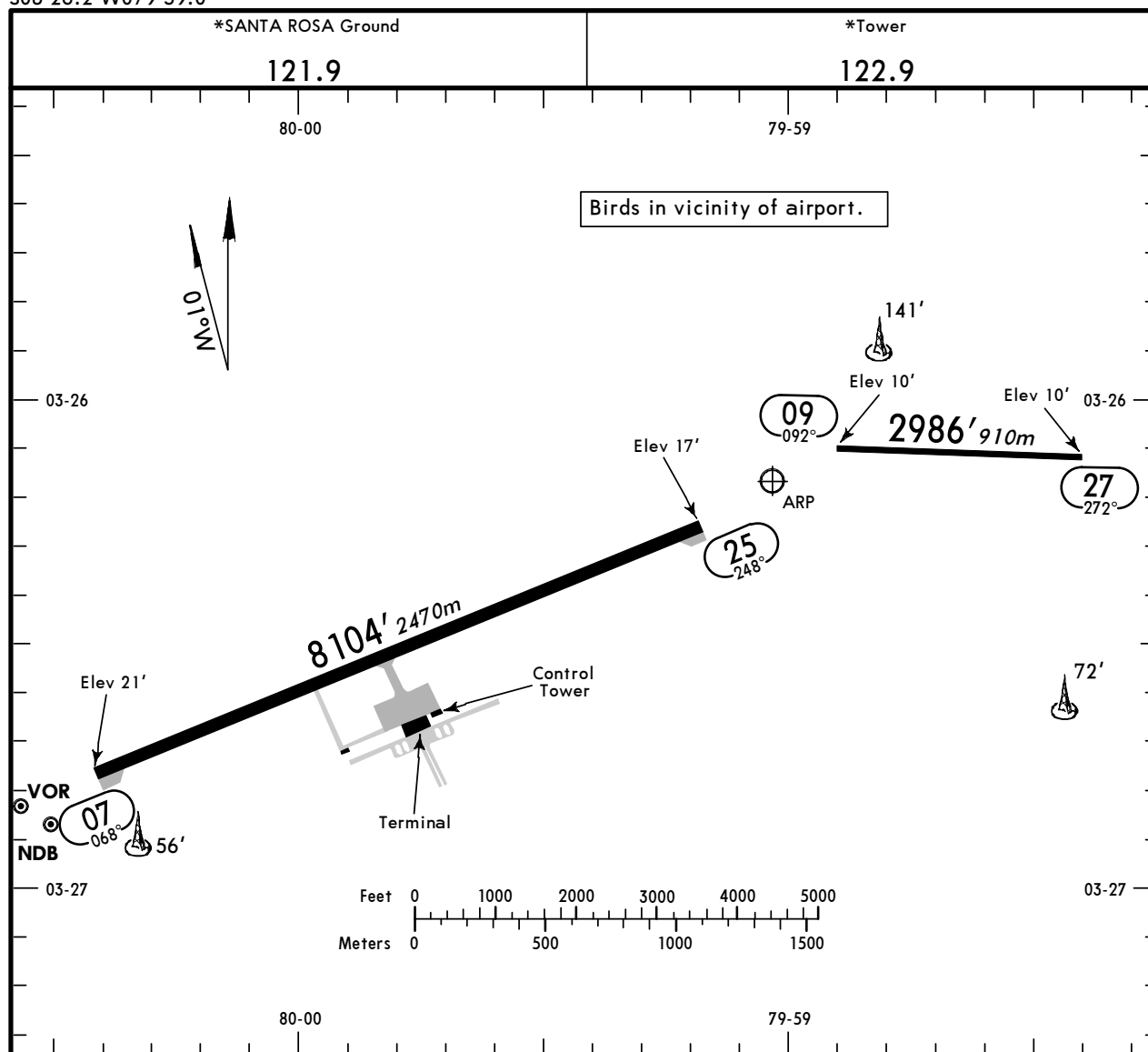
INITIAL CLIMB

After take-off, **MAINTAIN** runway heading to 5 NM (1 minute) STR climbing to or above **1000'**, turn LEFT to intercept track 353° to STR, at 5 NM to STR, continue climbing to STR, then proceed in accordance with ATC instructions.

SERO
Apt Elev 23'
S03 26.2 W079 59.0

JEPPESEN
8 JUN 12 (10-9)

SANTA ROSA, ECUADOR
SANTA ROSA REGL



ADDITIONAL RUNWAY INFORMATION					
RWY		USABLE LENGTHS		TAKE-OFF	WIDTH
		Threshold	Glide Slope		
07	HIRL PAPI-L (angle 3.0°)				148'
25	HIRL				45m
09					59'
27					18m

TAKE-OFF			
All Rws			
1 & 2 Eng	150m - 3.0 km		
3 & 4 Eng			

SERO

JEPPESSEN

SANTA ROSA, ECUADOR

22 JUN 12 (11-1)

Eff 28 Jun

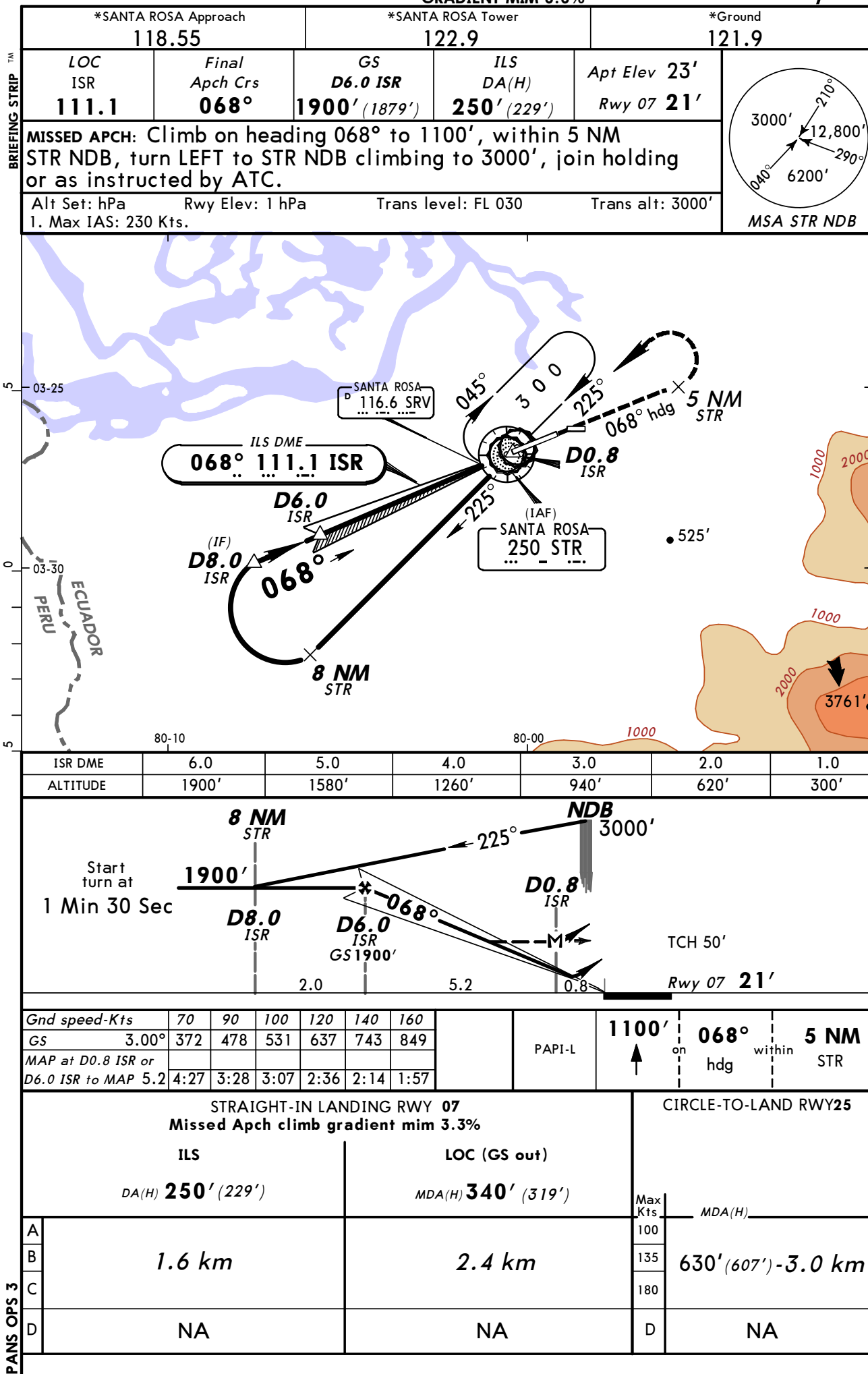
CAT A, B & C

APPROACH 5

SANTA ROSA REGL

MISSED APCH CLIMB
GRADIENT MIM 3.3%

NDB ILS DME Rwy 07



SERO

22 JUN 12

(11-2)

Eff 28 Jun

CAT A, B & C

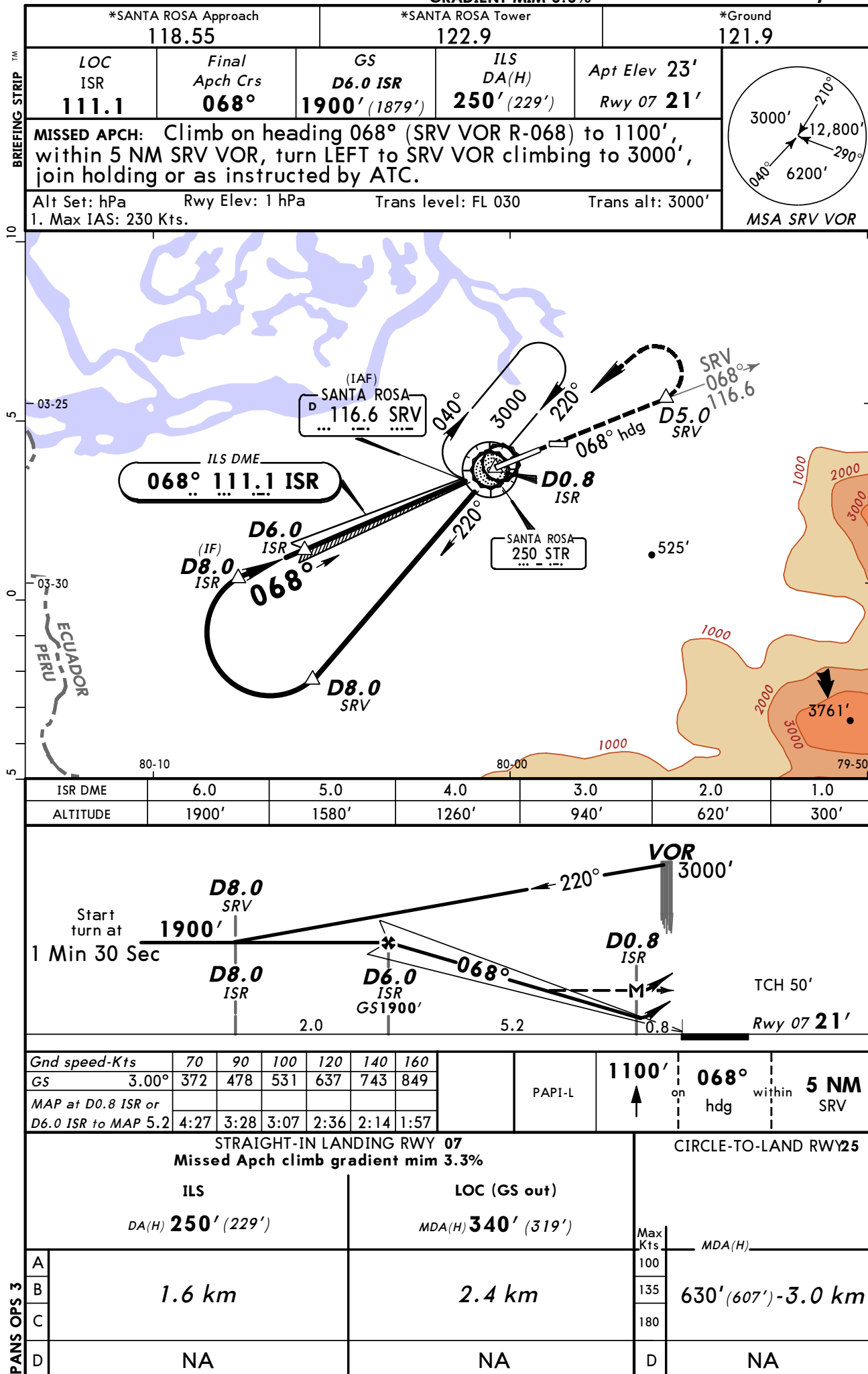
SANTA ROSA, ECUADOR

APPROACH 6

SANTA ROSA REGL

MISSED APCH CLIMB
GRADIENT MIM 3.3%

VOR ILS DME Rwy 07



CHANGES: Procedure name, approach frequency, profile.

© JEPPESEN, 2011, 2012. ALL RIGHTS RESERVED.

SERO

22 JUN 12
Eff 28 Jun

13-3

JEPPESEN SANTA ROSA, ECUADOR

CAT A, B & C

APPROACH 4

SANTA ROSA REGL

MISSED APCH CLIMB GRADIENT MIN 3.3%
VOR DME Rwy 25