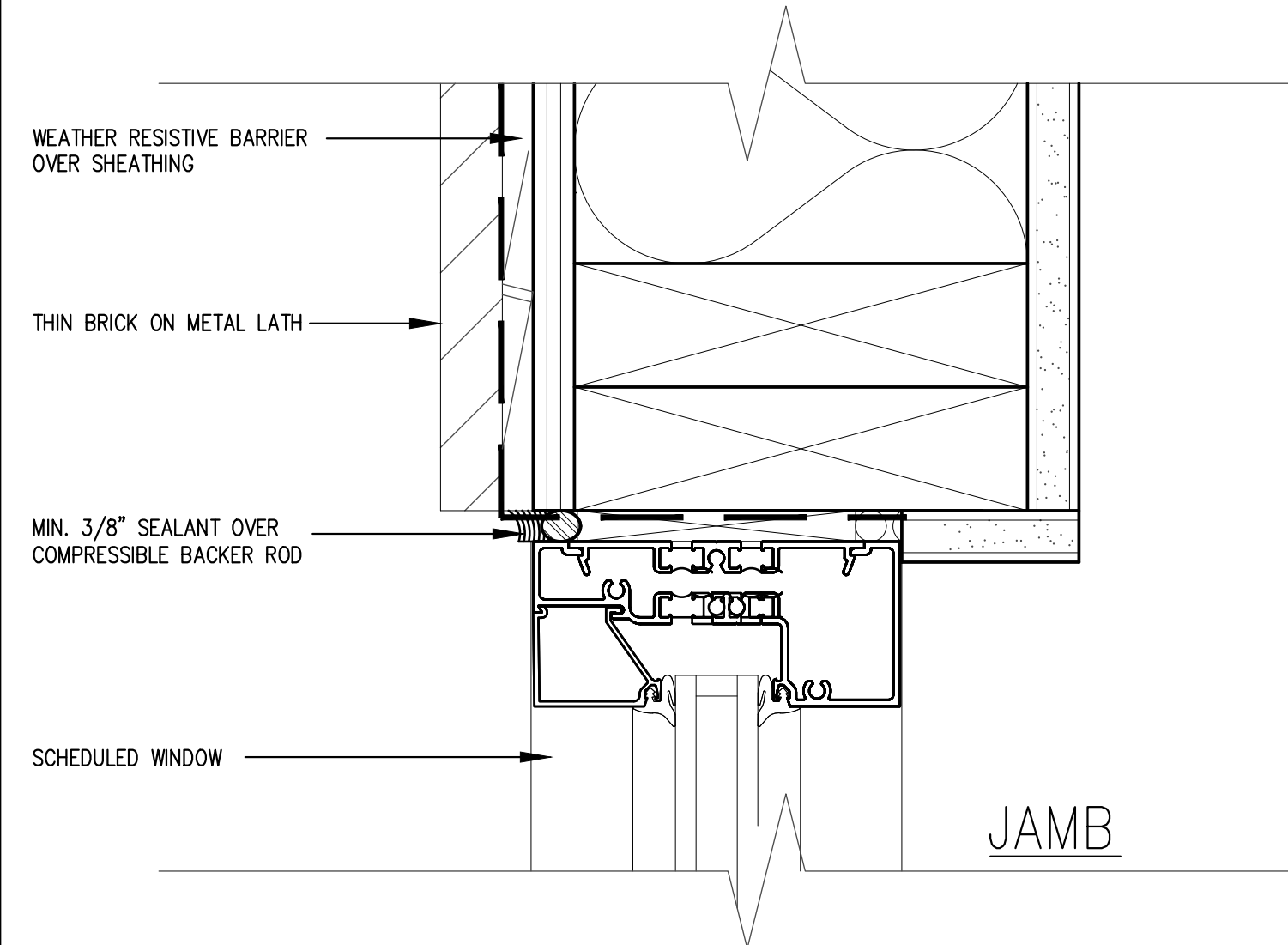
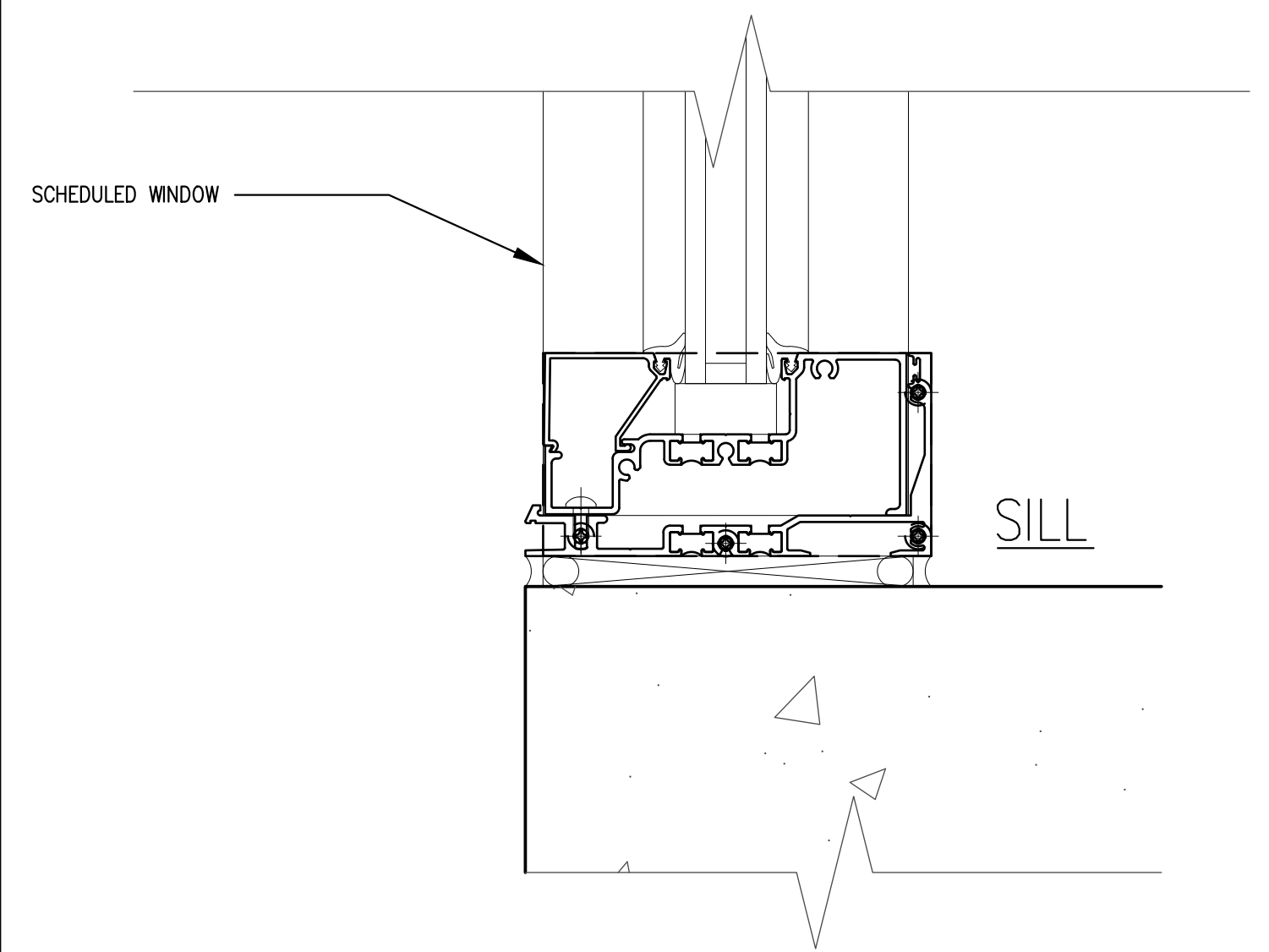


HEAD

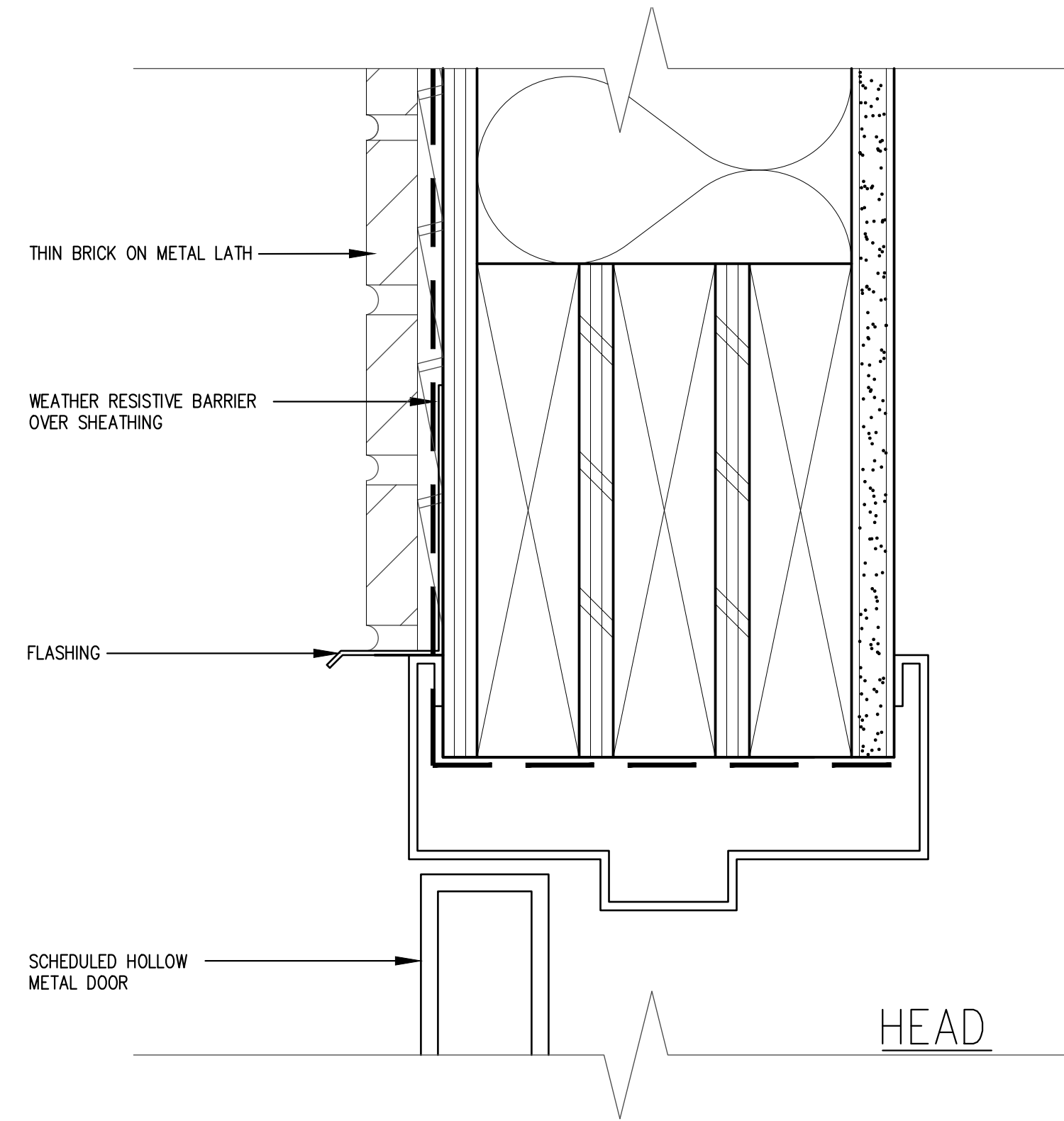


JAMB

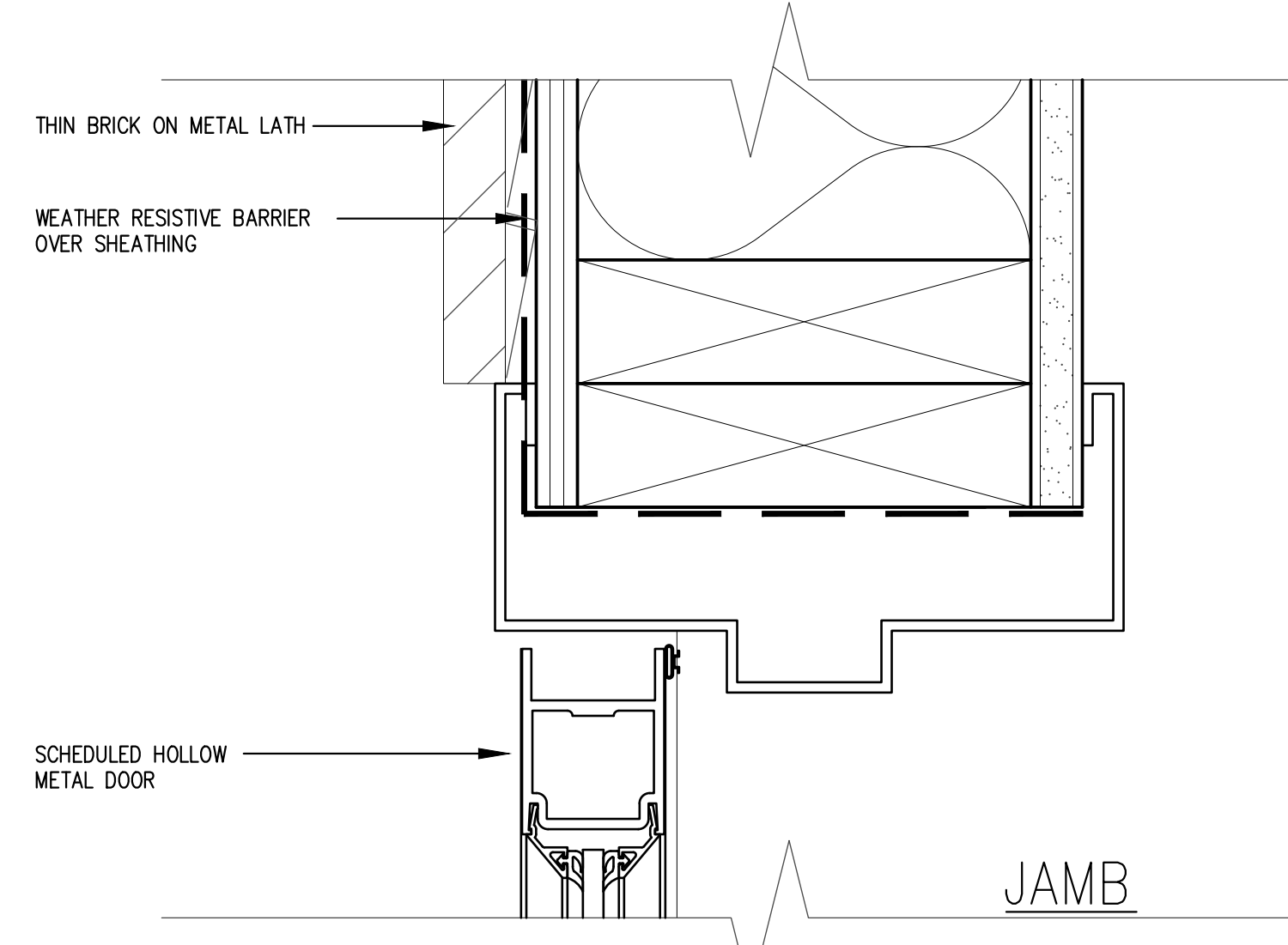


SILL

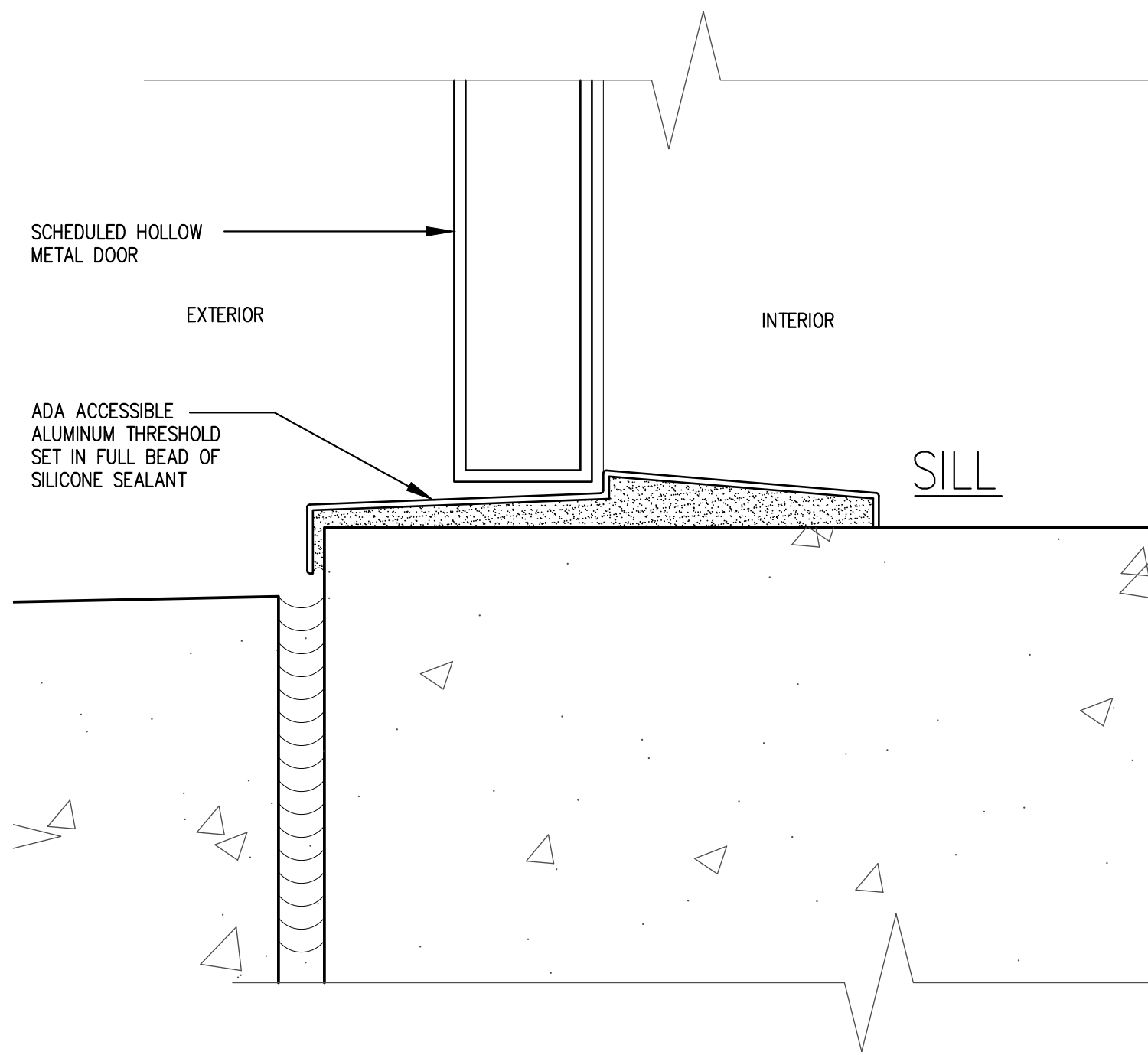
1 WINDOW DETAIL  
SCALE: 6" = 1'-0"



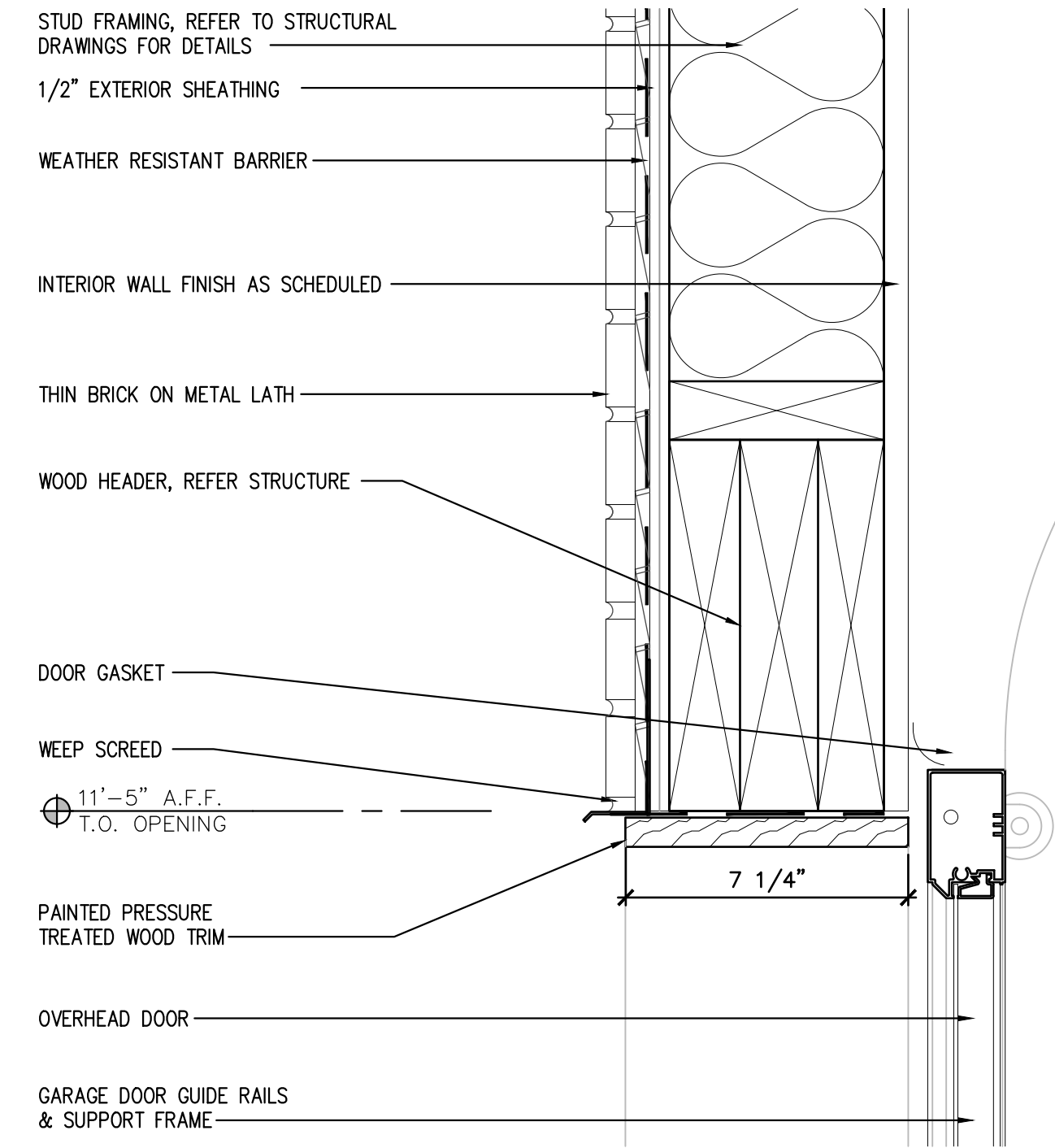
HEAD



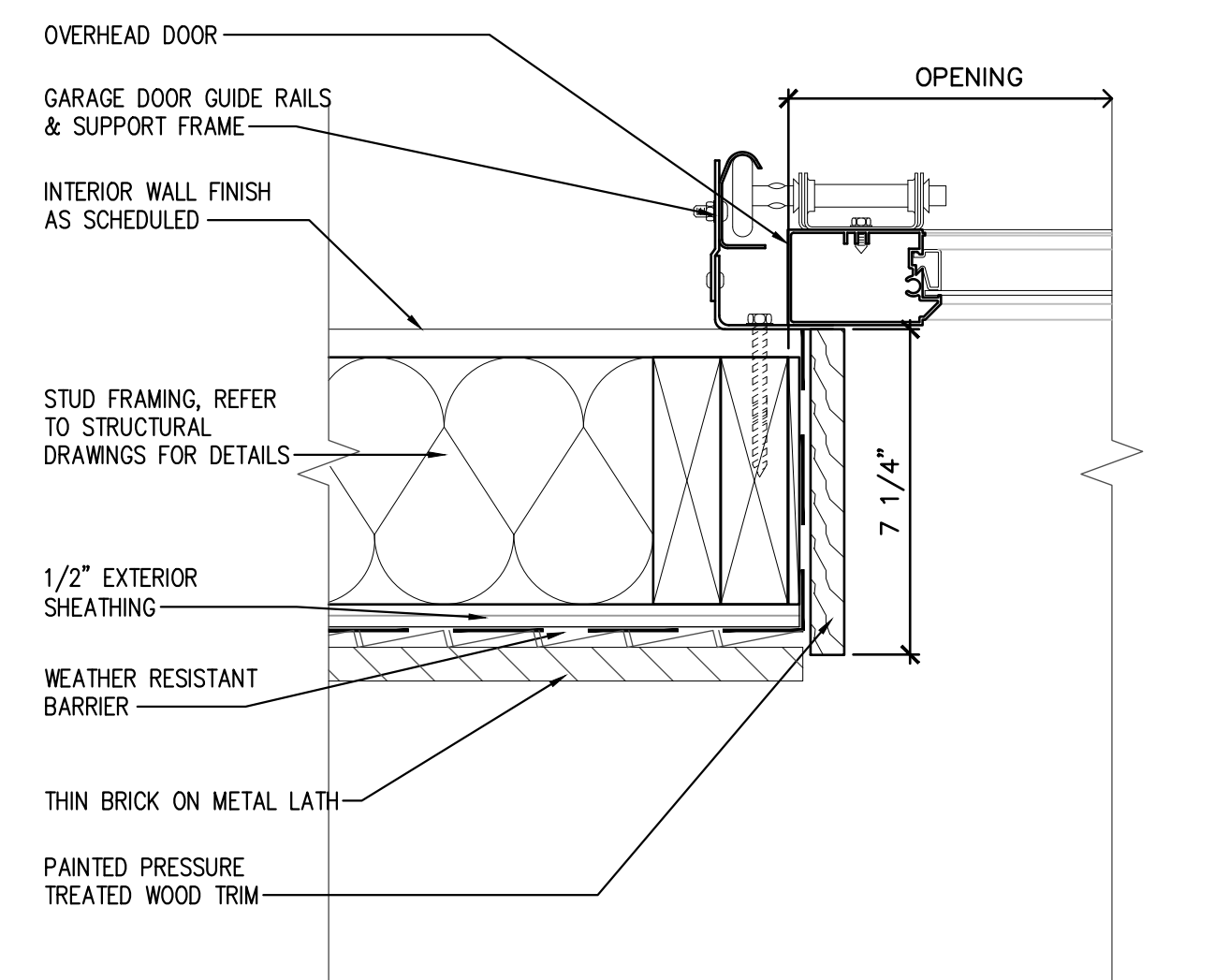
JAMB



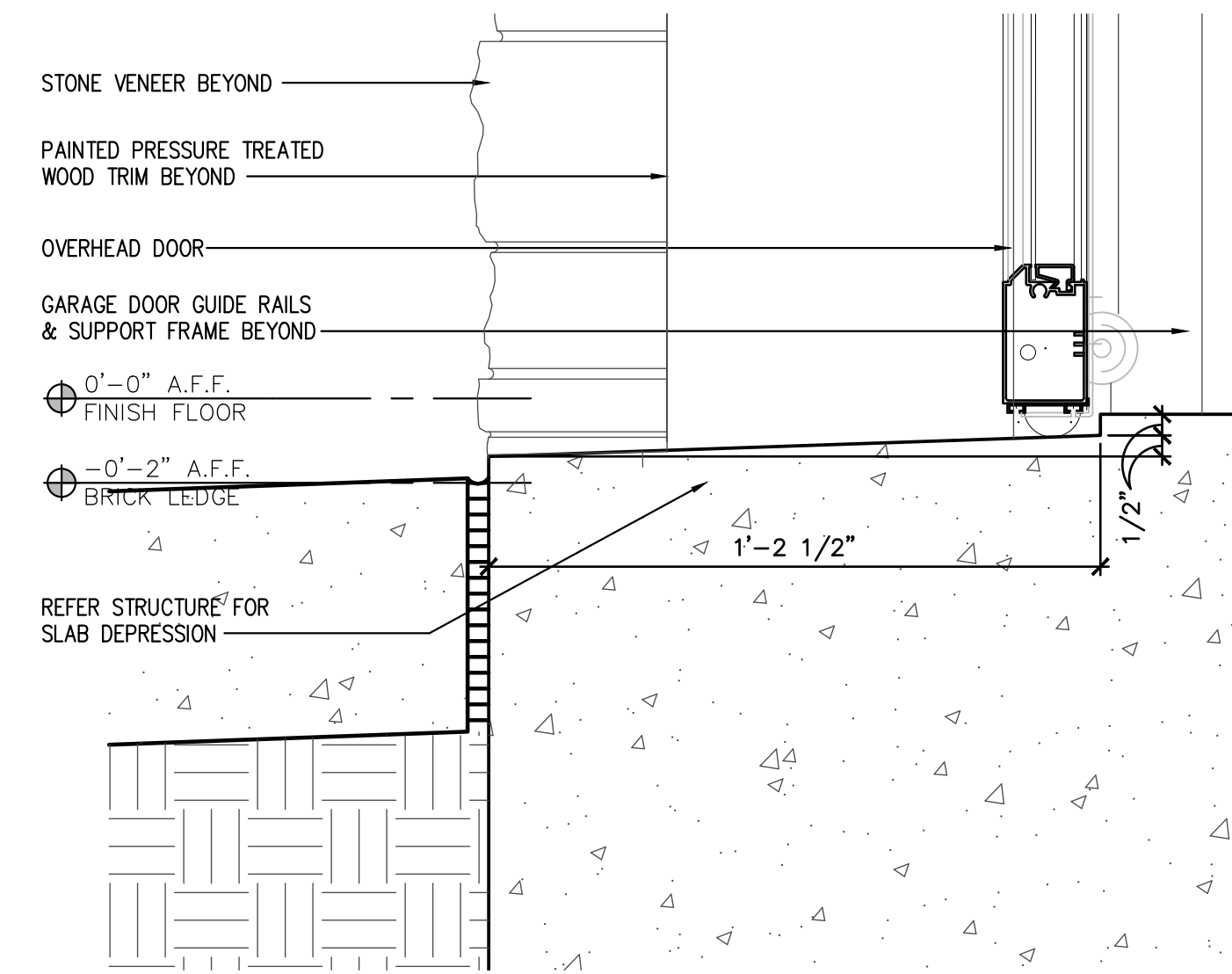
2 DOOR DETAIL  
SCALE: 6" = 1'-0"



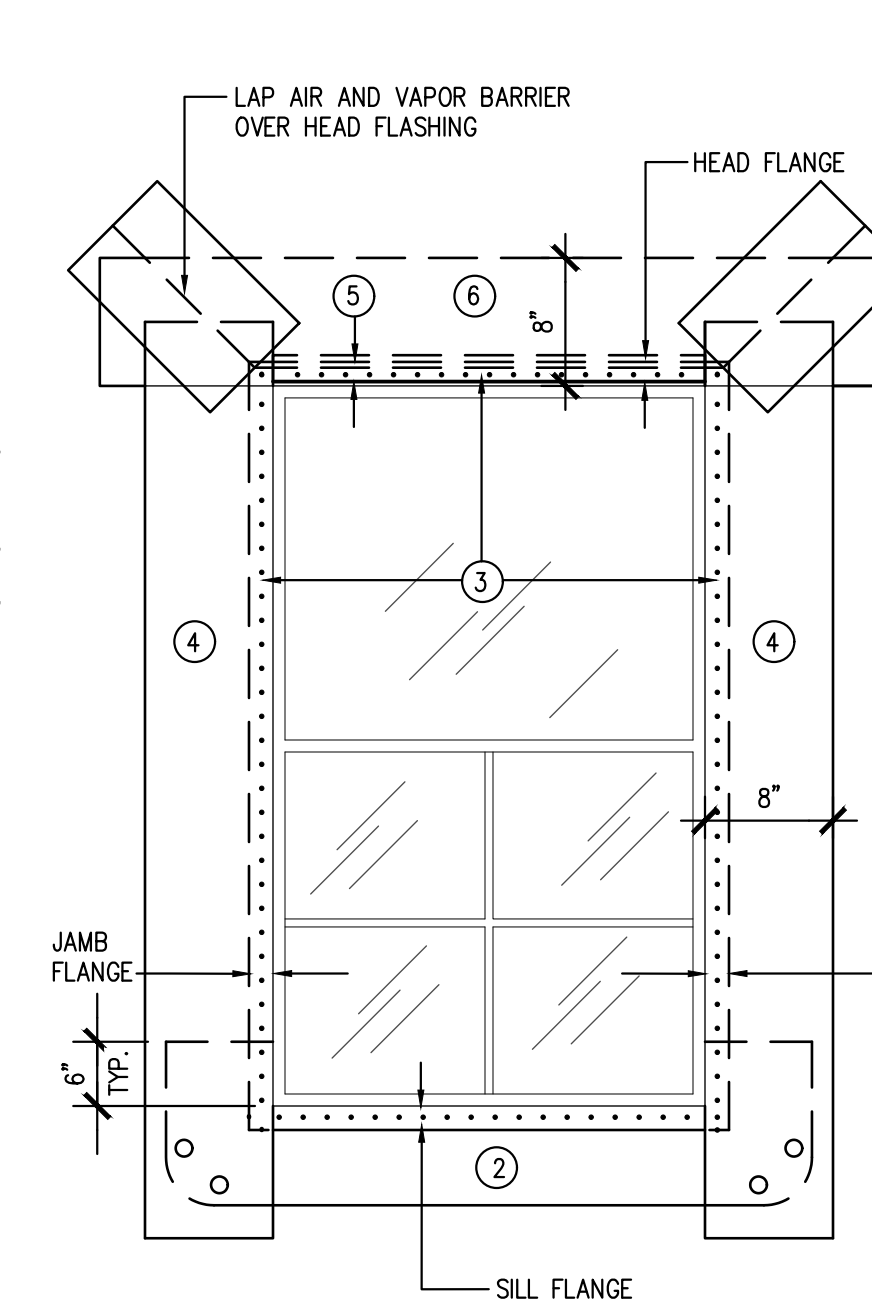
3 OVERHEAD DOOR HEAD DETAIL  
SCALE: 3" = 1'-0"



5 OVERHEAD DOOR JAMB DETAIL  
SCALE: 3" = 1'-0"

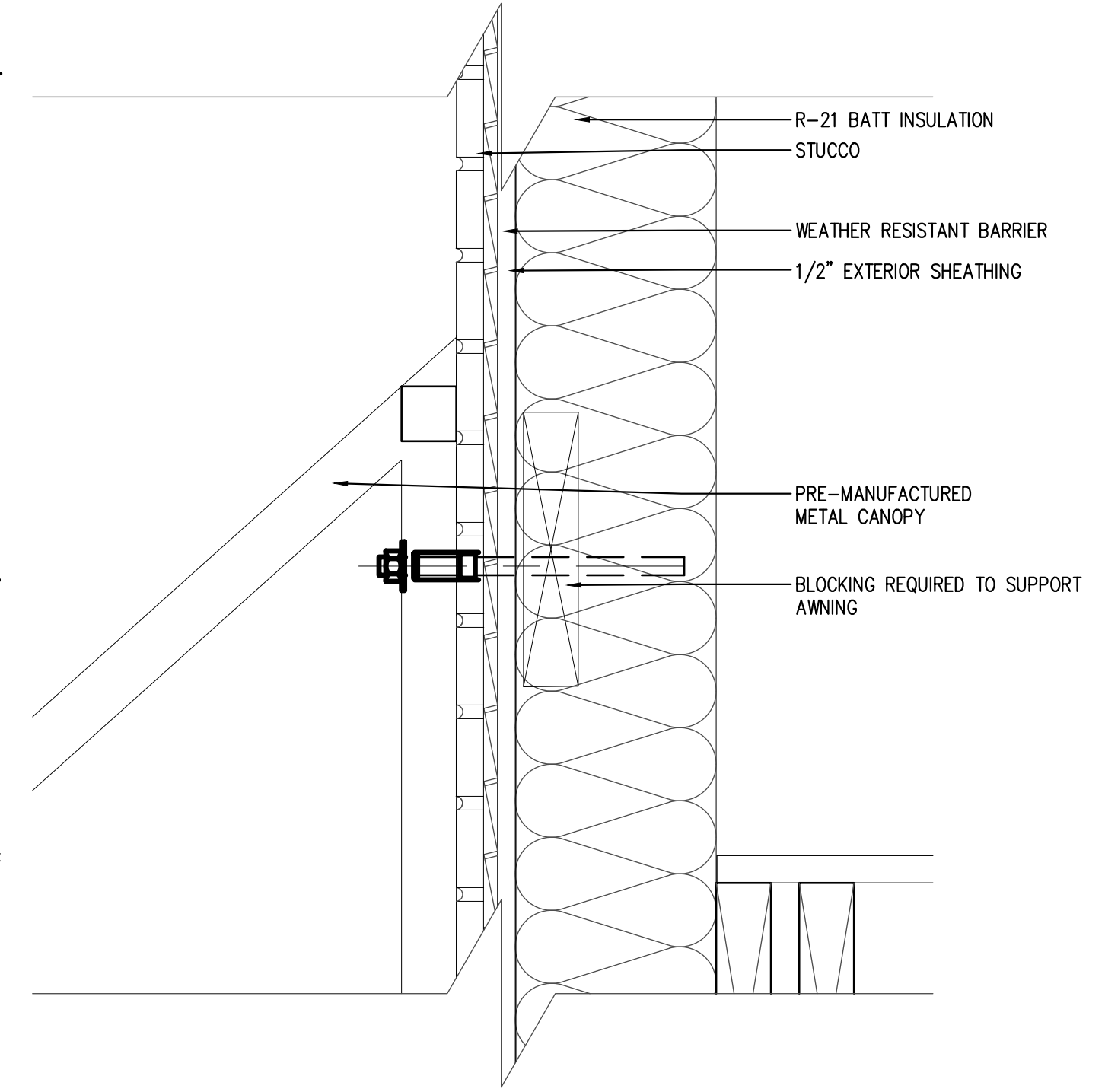


7 OVERHEAD DOOR SILL DETAIL  
SCALE: 3" = 1'-0"



NOTE: INSTALL VAPOR AND AIR BARRIER BUILDING WRAP OVER EXTERIOR SHEATHING. COVER WINDOW ROUGH OPENING, CUT A "MODIFIED I-CUT" AND FOLD BACK INSIDE FRAME BEFORE WINDOW AND FLASHING.

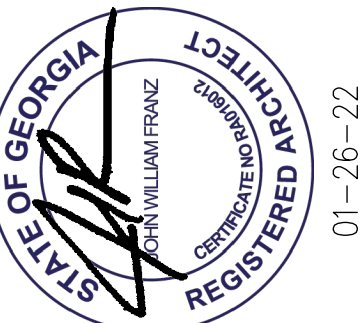
6 TYPICAL WINDOW FLASHING  
SCALE: NTS



4 CANOPY DETAIL  
SCALE: 3" = 1'-0"

WINDOW FLASHING STEPS

- EXTERIOR
1. INSTALL AIR AND VAPOR BARRIER WRAP OVER WINDOW OPENING. CUT BARRIER WRAP IN A "MODIFIED I-CUT" AND FOLD BACK INTO OPENING.
  2. INSTALL SELF-ADHESIVE FLEXIBLE WATERPROOFING SILL MEMBRANE OVER WINDOW SILL NAIL FLANGES, AND UP 6" ON JAMB SIDES (BOTH SIDES)
  3. APPLY SEALANT BEAD ON HEAD AND JAMB NAIL FLANGE AREAS OF OPENING. INSERT WINDOW FRAME AND ATTACH AT NAIL FLANGES TO BUILDING STRUCTURE
  4. INSTALL SELF-ADHESIVE FLEXIBLE WATERPROOFING JAMB MEMBRANE OVER JAMB NAIL FLANGE AND OVER SILL MEMBRANE
  5. INSTALL GALVANIZED WINDOW HEAD DRIP FLASHING. ATTACH TO BUILDING STRUCTURE
  6. INSTALL SELF-ADHESIVE FLEXIBLE WATERPROOFING HEAD MEMBRANE ABOVE WINDOW OVER FLASHING
- INTERIOR
7. INSTALL BACKER ROD AND SEALANT BETWEEN INTERIOR WINDOW FRAME AND ROUGH OPENING AT SILL AND 6" UP JAMB SIDES (MINIMUM)



**JOHN FRANZ**  
architect  
4055 International Plaza, Suite 100  
Fort Worth, Texas 76109  
(817) 737-9922

**STRICKLAND AND BROTHERS**  
TBD HWY 53  
DAWSONVILLE, GA 30534

Revisions:

File Name: 22047 - A2.6  
Project No: 22047  
Date: 01/26/22  
Drawn By: JMH  
Checked By: TI

SHEET  
**A2.6**  
DOOR AND WINDOW  
DETAILS