

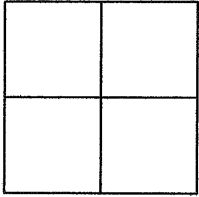
CORNER RECORD

Document Number CR 3286

City of OAKLAND

County of ALAMEDA, California

Brief Legal Description WELL MONUMENT LOCATED WITHIN MALCOLM AVENUE.



CORNER RECORD

Government Corner ☐ Control ☒
 Meander ☐ Property ☐
 Rancho ☐ Other ☐
 Date of Survey 12/03/2007

COORDINATES (Optional)

N. _____
 E. _____
 Zone _____ Datum _____
 Elev. _____

Corner — Left as found ☒ Found and tagged ☐ Established ☐ Reestablished ☐ Rebuilt ☐

Identification and type of corner found: Evidence used to identify or procedure used to establish or reestablish the corner:
FOUND BRASS PIN IN WELL MONUMENT WITHIN MALCOLM AVENUE.

AS SHOWN ON OAKLAND MONUMENT MAP, PAGE 70.

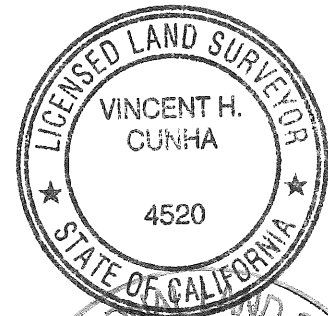
THIS POINT WAS REFERENCED PRIOR TO A CONSTRUCTION
PROJECT IN THE VICINITY

A description of the physical condition of the monument as found and as set or reset:
FOUND AND SET POINTS AS SHOWN ON PAGE 2.

SURVEYOR'S STATEMENT

This Corner Record was prepared by me or under my direction in conformance with
 the Land Surveyors' Act on DECEMBER 11, 2007.

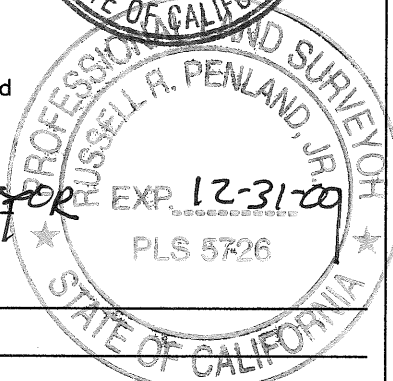
Signed Vincent H. Cunha L.S. Number L5 4520
VINCENT H. CUNHA EXP. 9-30-08



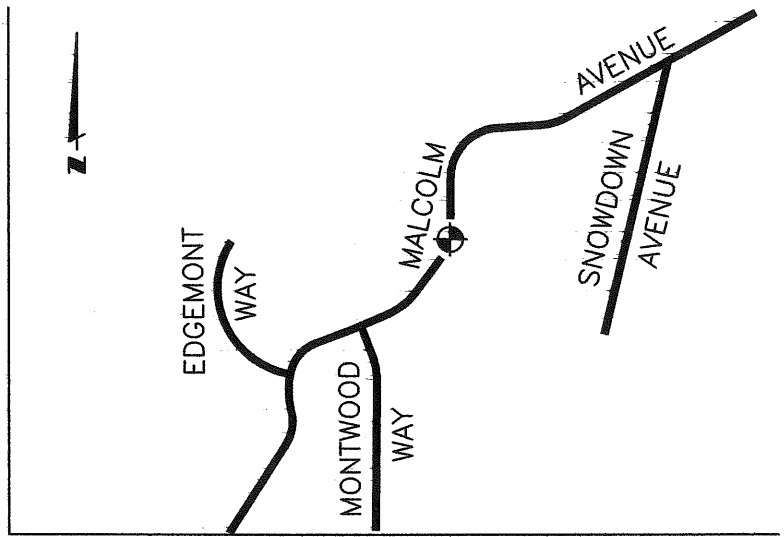
COUNTY SURVEYOR'S STATEMENT

This Corner Record was received 3-12-2008 and examined
 and filed 5-11-2008

Signed Russell R. Penland, Jr. Title COUNTY SURVEYOR
 EXP. 12-31-09 PLS 5726

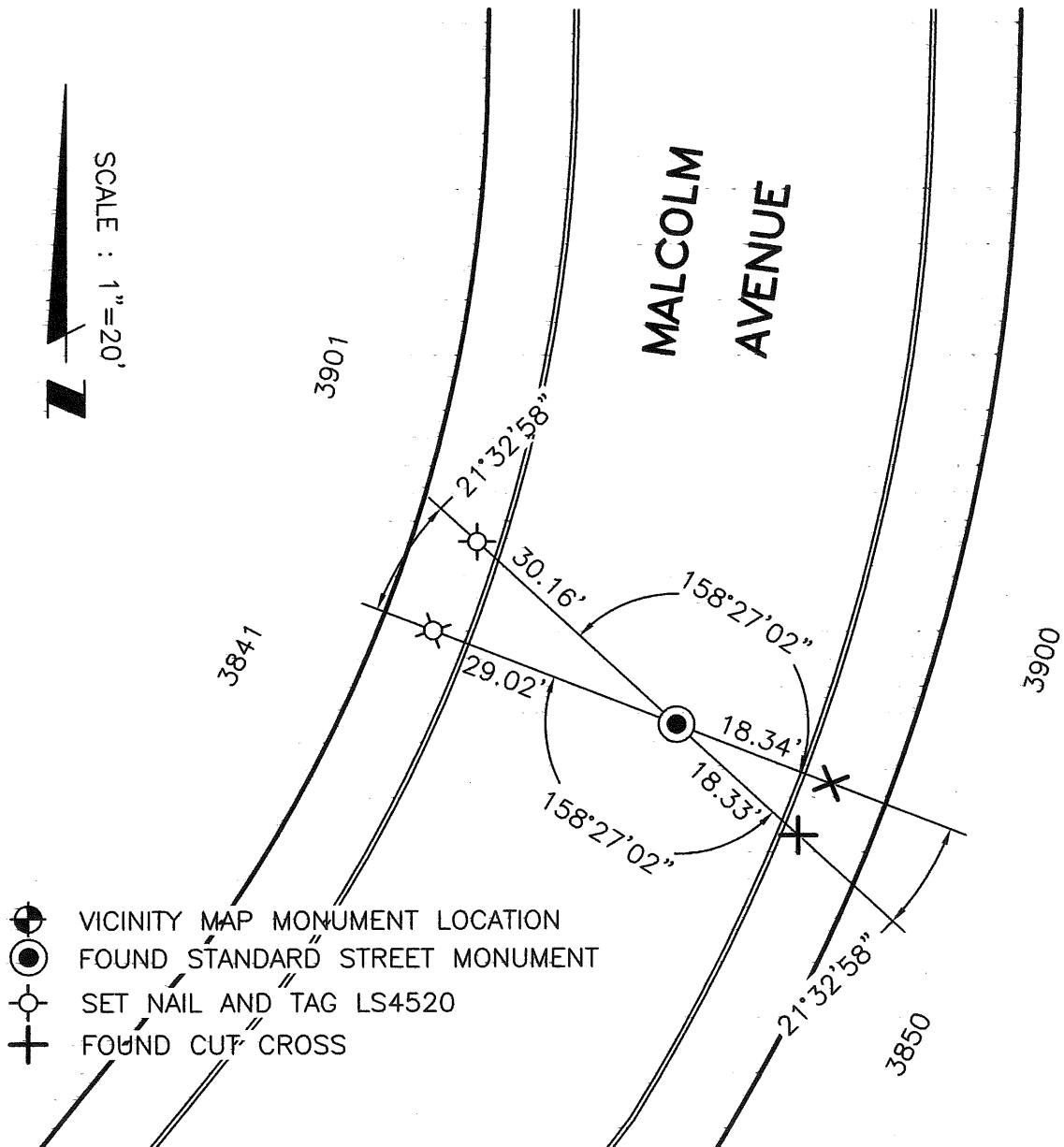


County Surveyor's Comment _____



VICINITY MAP
(NTS)

SCALE : 1"=20'



- VICINITY MAP MONUMENT LOCATION
- FOUND STANDARD STREET MONUMENT
- SET NAIL AND TAG LS4520
- FOUND CUT CROSS