

RECORD OF SURVEY NO. 34-82

SECTIONS 16/17, TOWNSHIP 1 NORTH, RANGE 26 EAST, M.D.B. & M.

CURVE DATA

C-32	C-33	C-40
R = 2,200.00'	R = 1,150.00'	R = 960.00'
$\Delta = 13^\circ 24' 00''$	$\Delta = 101^\circ 22' 00''$	$\Delta = 87^\circ 00' 12''$
L = 514.52'	L = 2,034.56'	L = 1,457.75'
T = 258.44'	T = 1,404.19'	T = 911.06'

C-50	C-51	C-52
R = 2,150.00'	R = 1,260.00'	R = 1,260.00'
$\Delta = 13^\circ 24' 00''$	$\Delta = 22^\circ 10' 15''$	$\Delta = 68^\circ 28' 10''$
L = 502.83'	L = 487.56'	L = 1,505.72'
T = 252.57'	T = 246.87'	T = 857.41'

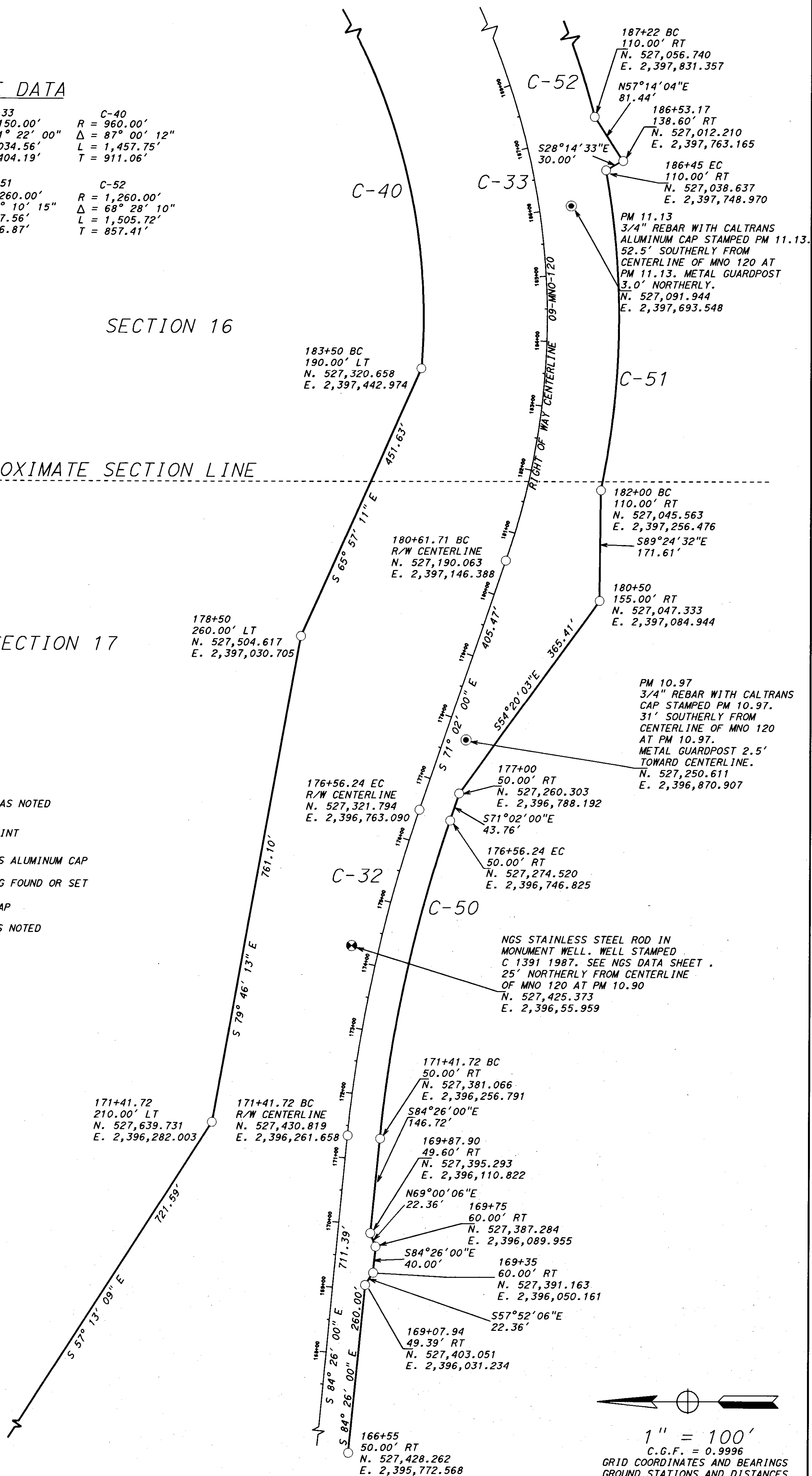
SECTION 16

SECTION 17

APPROXIMATE SECTION LINE

LEGEND:

- ◆ LAND NET CORNER, DESCRIBED AS NOTED
- N.G.S. PUBLISHED CONTROL POINT
- ⊙ SET 3/4" REBAR WITH CALTRANS ALUMINUM CAP
- CALCULATED POSITION, NOTHING FOUND OR SET
- ⊕ FOUND CALTRANS T-BAR WITH CAP
- ⊗ NGS BENCH MARK, DESCRIBED AS NOTED



1" = 100'

C.G.F. = 0.9996
GRID COORDINATES AND BEARINGS
GROUND STATIONS AND DISTANCES