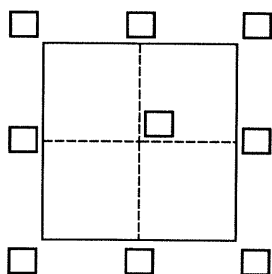


CORNER RECORD

Agency Index BK 102 PG 55
Document Number CR 10665

City of San Lorenzo County of Alameda, California
Brief Legal Description Monument Well at the intersection of Ashland Avenue & Delano Street



CORNER TYPE

Government Corner ☐ Control ☒
Meander ☐ Property ☐
Rancho ☐ Other ☐
Date of Survey September 21, 2017

COORDINATES (Optional)

N. 2078899.55 E. 6093272.00
Elevation _____
Units Metric ☐ U.S. Survey Foot ☒
Horizontal Datum NAD83
Zone III Epoch Date 1991.35
Vertical Datum _____
☐ Complies with Public Resources Code §§8801-8819
☐ Complies with Public Resources Code §§8890-8902

PLS Act Ref.: ☐ 8765(d) ☒ 8771 ☐ 8773 ☐ Other:
Corner/Monument: ☐ Left as found ☐ Established ☐ Rebuilt ☐ Pre-Construction
☐ Found and tagged ☒ Reestablished ☐ Referenced ☒ Post-Construction

Narrative of corner identified and monument as found, set, reset, replaced, or removed:

☒ See sheet #2 for description(s):

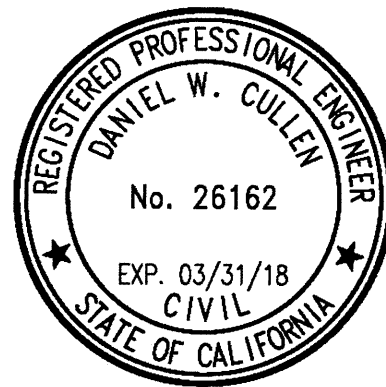
Monument was not disturbed during construction activities. Pre-Construction CR 9767.

Alameda County Monument ID 'LJ22A5'

Brass Disk & Punch Stamped 'Alameda County Surveyor ASH-4 1978'

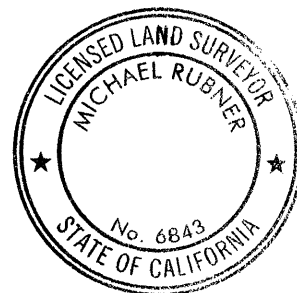
SURVEYOR'S STATEMENT

This Corner Record was prepared by me or under my direction in conformance with
the Professional Land Surveyors' Act on September 21, 2017.
Signed Dan Cullen P.L.S. or R.C.E. No. 26162



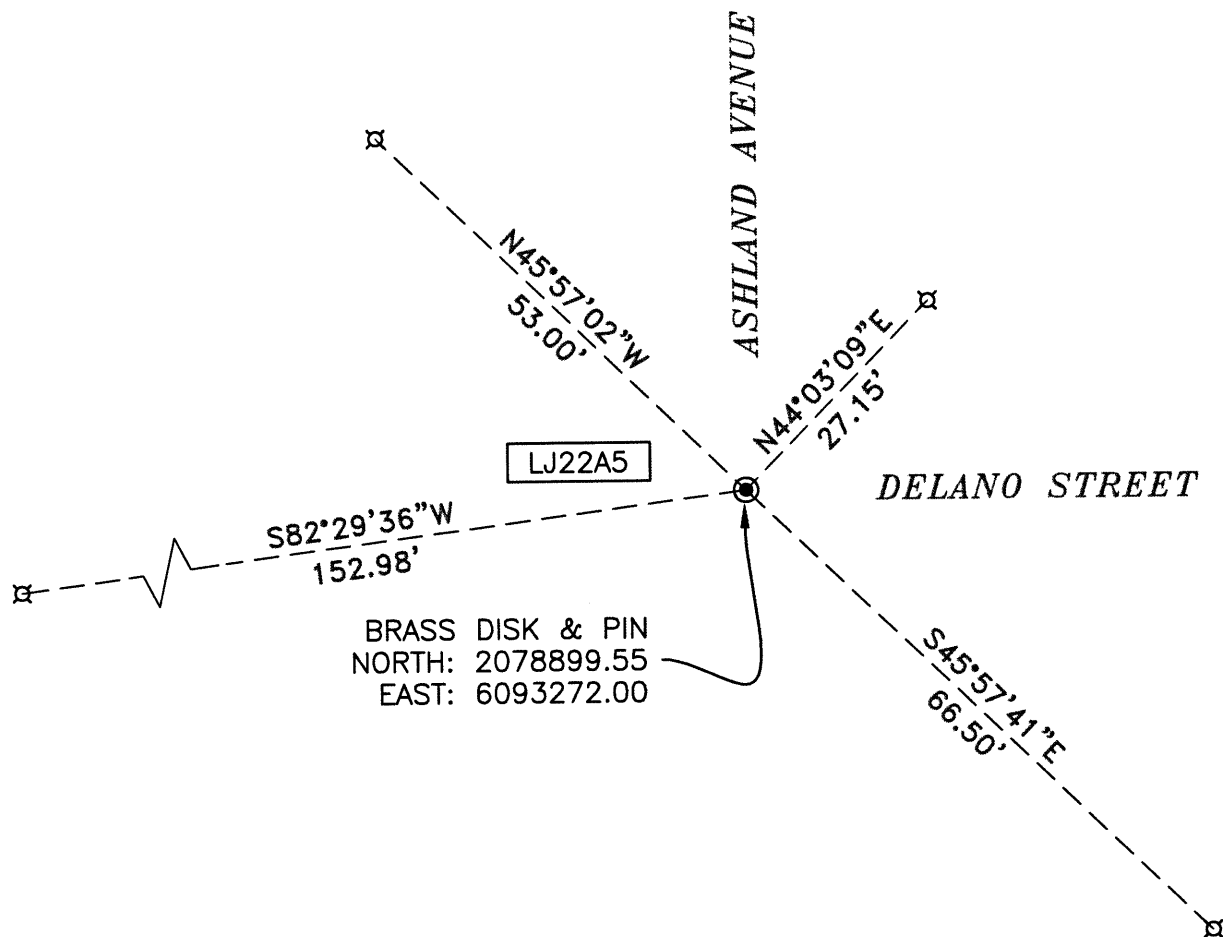
COUNTY SURVEYOR'S STATEMENT

This Corner Record was received 25 SEPTEMBER 2017
and examined and filed 12 OCTOBER 2017.
Signed Michael Rubner P.L.S. or R.C.E. No. 6343
Title COUNTY SURVEYOR



County Surveyor's Comment

Work Order No. R32107, Specification No. 2294

**LEGEND:**

● FOUND STREET MONUMENT, STAMPED
"ALAMEDA COUNTY SURVEYOR
ASH-4 1978"

⌘ SET MAG NAIL IN AC

----- REFERENCE LINE

XX##X## ALAMEDA COUNTY MONUMENT ID

NOTES:

1. DISTANCES ARE IN FEET AND DECIMALS THEREOF.



Scale 1" = 20'

PAGE 2 OF 2

**ASHLAND AVE & DELANO STREET
SAN LORENZO, CA
ALAMEDA COUNTY**



Cullen-Sherry
& Associates, Inc.
Civil Engineering - Surveying
1090 Adams Street, Suite A - P.O. Box 591
Benicia, California 94510
(707) 745-3219 Fax (707) 745-9436 CSA-ENGINEERS.COM

SCALE:	AS NOTED
DATE:	09/21/2017
DRAWN BY:	CF
CHECKED BY:	DWC
PROJECT NO:	17113