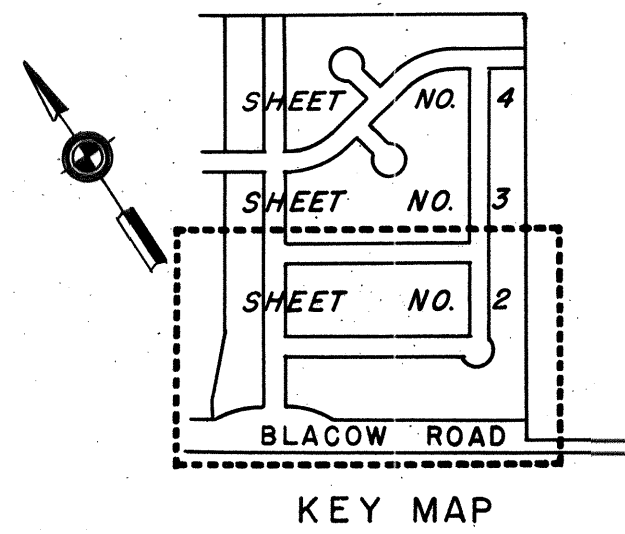


TR.
2082



LEGEND:

Existing monuments are shown thus

Concrete monuments with cast iron frame and cover to be installed are shown thus

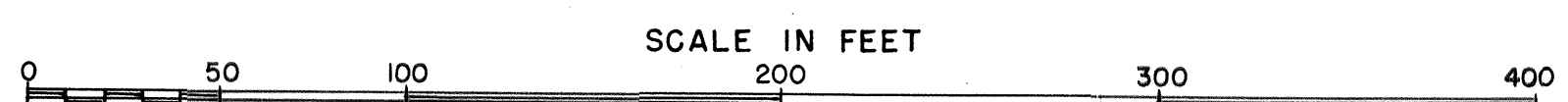
Public utility easements are designated thus P.U.E.

Anchor easements are designated thus A.E.

Building set-back lines, to be as required by the Zoning Ordinance of the City of Fremont, are designated thus B.S.B.L.

BASIS OF BEARINGS:

"TRACT 2025" etc. filed June 4, 1959 in Book 41 of Maps at pages 1 and 2 in the office of the County Recorder of Alameda County.



TRACT 2082 FREMONT VILLAGE UNIT NO. 2 IN THE CITY OF FREMONT IN THE COUNTY OF ALAMEDA CALIFORNIA

JUNE, 1959 SCALE: 1 INCH = 50 FEET
John A. Mancini,
Registered Civil Engineer No. 1592
Sheet No. 2 of 4 Sheets