

Township 7S, Range 2 West
Mt. Diablo Meridian

Note:
 Basis of Bearings is Section Line
 between Sections 33 & 34 - $N. 00^\circ 14' 00'' E.$
 as shown in Map Book E of Page 78
 Office of the County Engineer, Santa Clara
 County.

COUNTY OF SANTA CLARA
 DEPARTMENT OF PUBLIC WORKS
 20 WEST ROSA ST. - SAN JOSE CALIF.

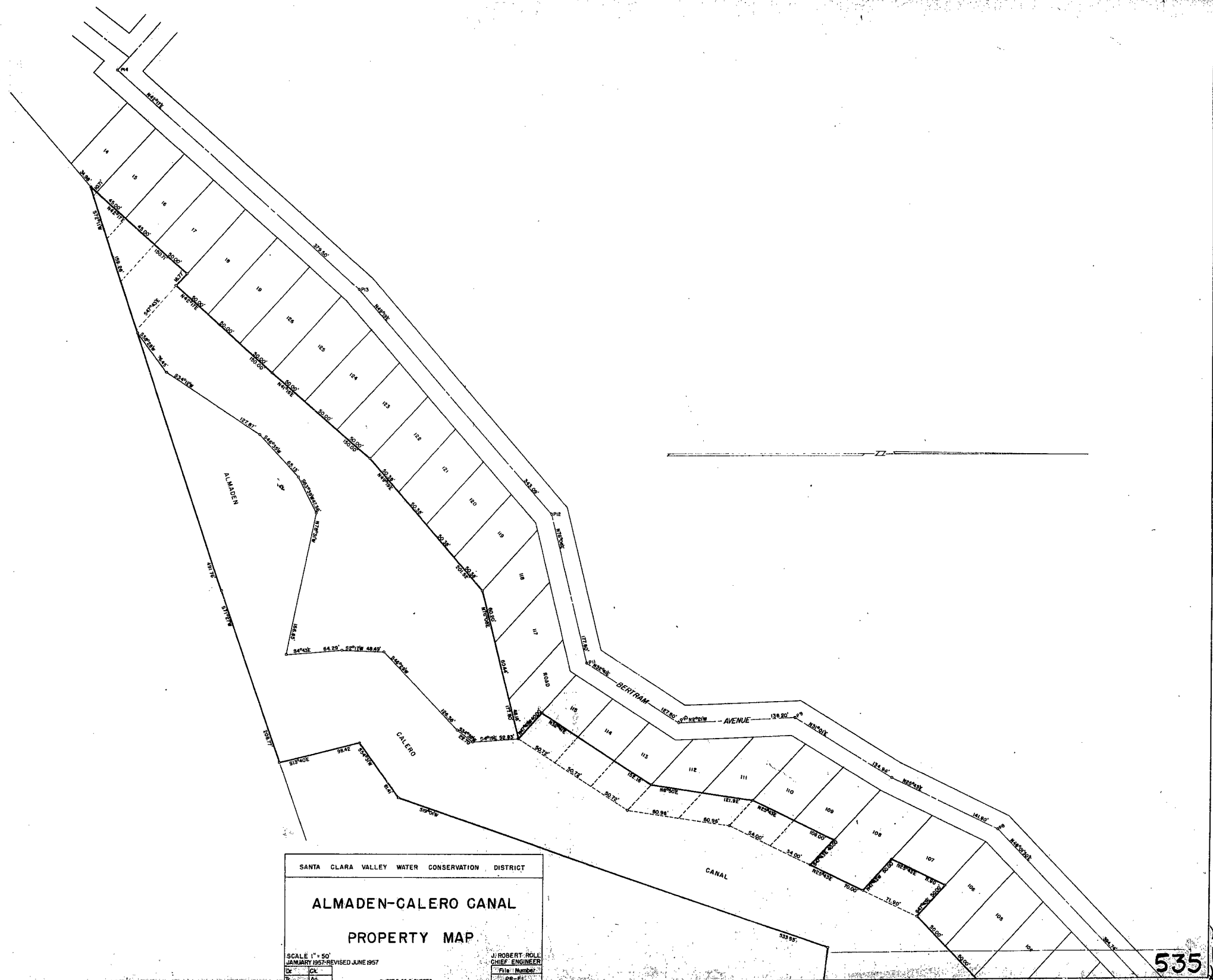
CAMP SITE NO. 4

A PORTION OF SECTION 34, T 7S,
 R 2W, MDM

Scale: 1" = 100' #3237

DRAWN:	DATE	FIELD BOOK	PAGE	APPROVED
W.R.F.	1-7-78	104M	24	
CHECKED:				
CHANGE 1				
CHANGE 2				
CHANGE 3				
CHANGE 4				

534
 MICROFILM 534



SANTA CLARA VALLEY WATER CONSERVATION DISTRICT

ALMADEN-CALERO CANAL

PROPERTY MAP

SCALE 1" = 50'
JANUARY 1957-REVISED JUNE 1957

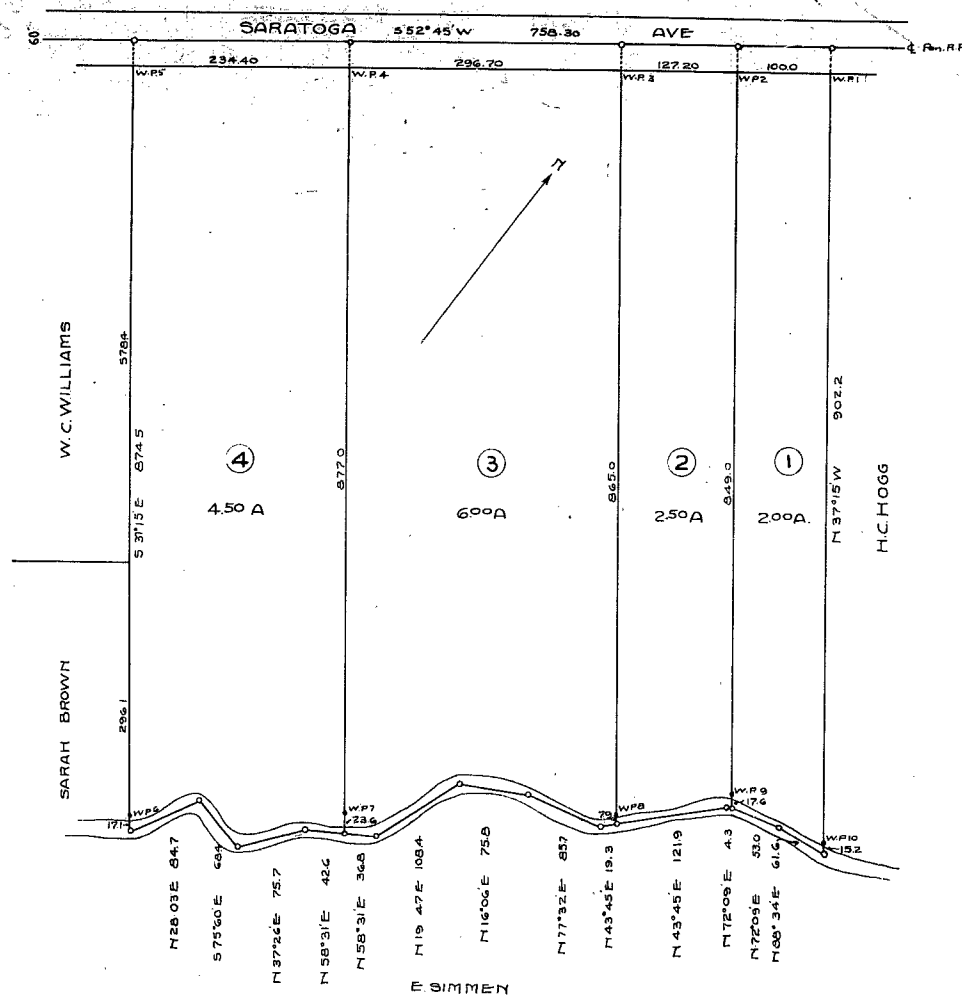
J. ROBERT ROLL
CHIEF ENGINEER

File Number
PB-51

SHEET 2 OF 2 SHEETS

535

MICROFILM



MAP
 OF THE
KRICK SUBDIVISION
 BEING A PART OF THE SIMMONS TRACT
 IN THE
QUITO RANCHO
 SURVEYED JULY 1914 BOOK 6 PAGE 63
 SCALE + 1" = 80'