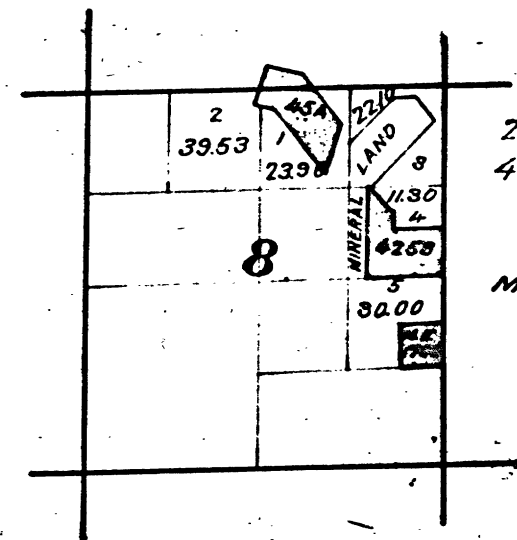


T.A.B.  
337

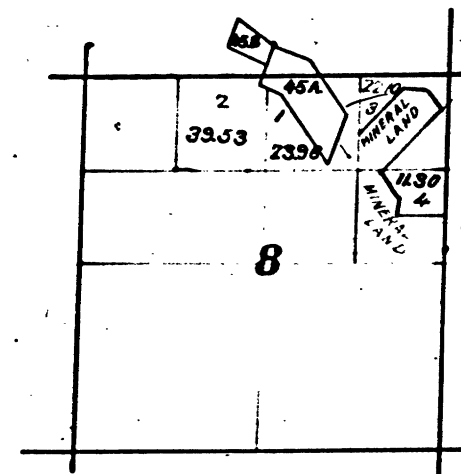


2128 45A Rose Hill Quartz Mine V56-8  
4258 Bradford Placer Mining Claim  
Segregation of agricultural from mineral land, Lots 3 & 4.  
Sec 8 see field notes of Dep. Sur. A. H. Coulter dated October 1st 1887.  
M. E. N° 1796 Goose Neck Placer, S.E. 1/4 of N.E. 1/4 of Sec. 8, Pat. Nov. 2, 1901.

The above diagram of Section 8, Township N° 4 North, Range N° 13 East, Mount Diablo Meridian, California, is correctly constructed from official plats on file in this Office  
U. S. Surveyor General's Office.  
San Francisco California  
January 3, 1905.

*W. S. Graham*  
U. S. Surveyor General for California.

T. N° 4, N. R. N° 13 E. M. D. M.



2. Segregation of agricultural from mineral land  
Lots 3 & 4 Sec. 8.  
See field notes of Dep. Sur. A. H. Coulter. Dated  
October 1st 1887.

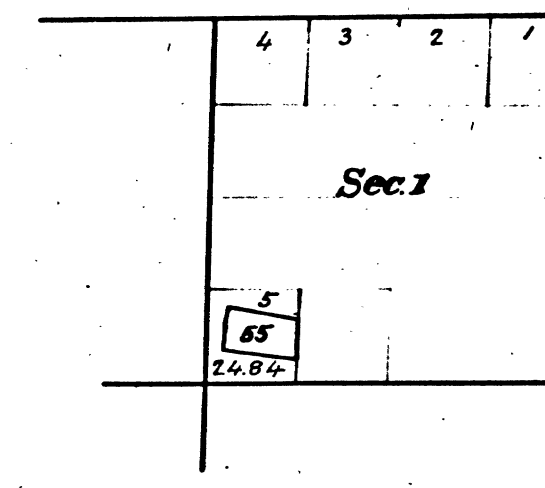
The above diagram showing amendments to Section 8, Township  
N° 4 North, Range N° 13 East, Mount Diablo Meridian is correctly  
copied from the Original map as amended and on file in this Office.

U. S. Surveyor General's Office.  
San Francisco, California  
October 31st 1887.

*A. C. Hammond*

U. S. Surv. Gen'l. Cal.

T. 4. N. R. 13. E. M. D. M.



3491 Lot 55. Table Mountain Quartz Mine V109-6

The above diagram of Sec. 1 - T. 4. N. - R. 13. E. - M. D. M.  
is correctly copied from the amended plat on  
file in this Office.

U. S. Surveyor General's Office.  
San Francisco California  
October 23, 1897.

*W. S. Green*  
U. S. Surveyor General  
for California.

DEPARTMENT OF THE INTERIOR,  
GENERAL LAND OFFICE,  
Washington, D. C. *Sept. 5, 1905.*  
I hereby certify that this is a true copy  
of the plat of official survey of the lands  
to which it relates, on file in this office.

*H. S. [Signature]*  
Recorder, General Land Office.

SEAL.

