

SURVEYOR'S CERTIFICATE

This map was prepared by me or under my direction and is based upon record data in conformance with the requirements of the Subdivision Map Act of the request of Franklin-Bohl Development Company on August 8, 1966. A tentative map is not required as excluded by Section 115351(b) of the Business and Professions Code. I hereby certify that all provisions of applicable state laws and local ordinances have been complied with.

Marvin D. Kirkeby
MARVIN D. KIRKEBY RCE/14001

3101840

COUNTY RECORDER'S CERTIFICATE

Filed for record this 11th day of August 1966, at 1:30 PM in Book 213 of Maps at page 28 of the request of Marvin D. Kirkeby.

\$5.00

PAUL R. TEILH
COUNTY RECORDER
By: *Donald E. Robinson*
Deputy

CITY ENGINEER'S CERTIFICATE

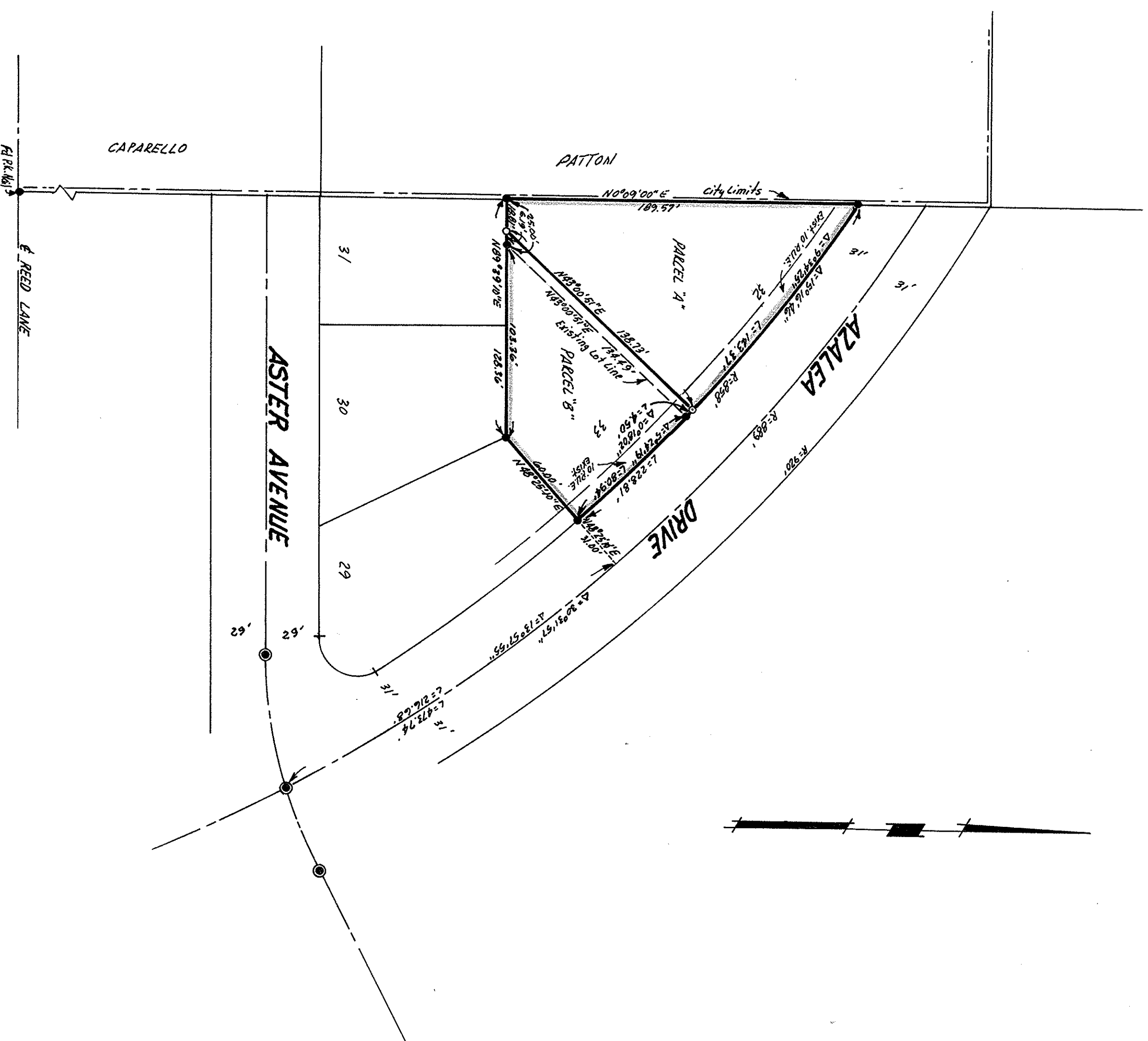
This map has been examined this 10th day of August, 1966, for conformance with the requirements of Section 18335 of the Subdivision Map Act.

Donald M. Souwer
CITY ENGINEER

BASIS OF BEARINGS AND NOTES

The bearing (N0°09'00"E) of the westerly boundary of Tract No. 4156, Ponderosa Pines Unit No. 2, recorded in Book 207 of Maps at Page 29, Santa Clara County Records was used as the basis of bearings shown on this map.

- Indicates 3/4" iron pipe found, unless otherwise noted.
- Indicates 3/4" iron pipe set, unless otherwise noted.
- ⊙ Indicates Standard City Monument Found



PARCEL MAP

IN THE CITY OF SUNNYVALE
COUNTY OF SANTA CLARA, CALIFORNIA
BEING A REDIVISION OF LOTS 32 AND
33, TRACT NO. 4156, PONDEROSA PINES,
UNIT NO. 2, RECORDED IN BOOK 207
OF MAPS AT PAGE 29, SANTA CLARA
COUNTY RECORDS.

SCALE: 1"=50'
AUGUST, 1966
MARVIN D. KIRKEBY - CIVIL ENGINEER