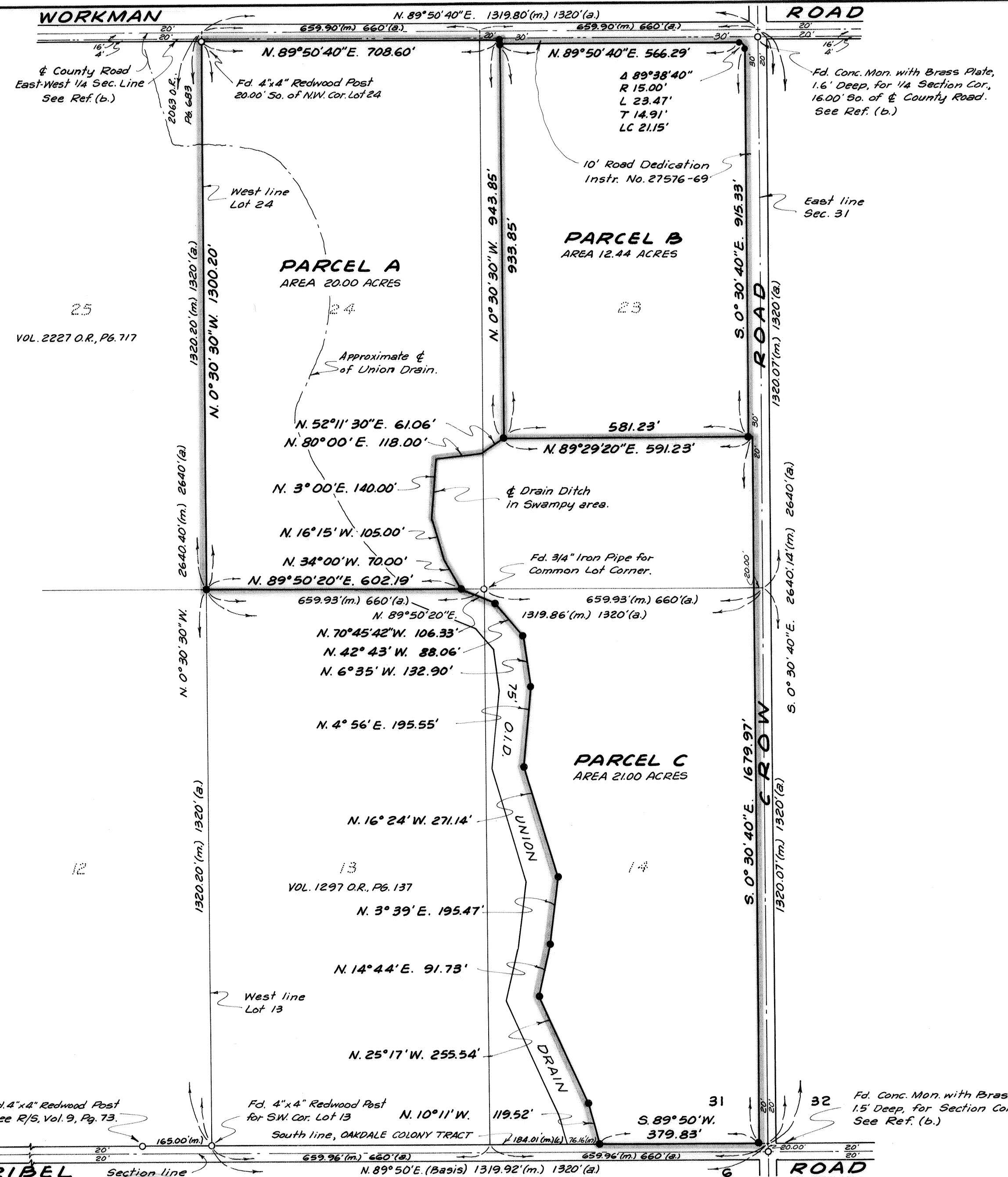


SCALE: 1" = 200'



BASIS OF BEARINGS:
N. 89°50'E. for the South line of Section 31, T.2S., R.11E., M.D.M., as shown on Map of the Oakdale Colony Tract, filed in Volume 8 of Maps, Page 5, Stanislaus County Records.

REFERENCES:
(m.) Measured on this survey.
(a.) Oakdale Colony Tract, Vol. 8 Maps, Pg. 5.
(b.) County Survey #908.
(c.) Deed, Vol. 962 O.R., Pg. 534.

MONUMENTS:
Monuments found are as noted. Monument set is shown thus: —●— for a 3/4" x 30" Iron Pipe, tagged RCE 5905.

OWNERSHIP:
Title to Parcels A, B, and C is vested in Asa E. Merry and Beryl M. Merry by Deed recorded in Vol. 962 O.R., Pg. 534, Stanislaus County Records.

<p>SURVEYOR'S CERTIFICATE</p> <p>This map was prepared by me or under my direction and from Record Data and a field survey in conformance with the requirements of the Subdivision Map Act at the request of <u>ASA E. MERRY</u> on <u>JULY 21</u>, 19<u>69</u>. I hereby certify that it conforms to the approved tentative map and the conditions of approval thereof; that all provisions of applicable state law and local ordinances have been complied with.</p> <p>by <u>H. W. Jorgensen</u></p> <p>Seal</p>	<p>COUNTY SURVEYOR'S CERTIFICATE</p> <p>This map has been examined this <u>26th</u> day of <u>AUG.</u>, 19<u>69</u>, for conformance with the requirements of Section 11575 of the Subdivision Map Act.</p> <p><u>RICHARD G. BARHITE</u> County Surveyor</p> <p>by <u>Antonia Bruch</u> Deputy</p>	<p>RECORDER'S CERTIFICATE</p> <p>Filed this <u>26</u> day of <u>Aug.</u>, 19<u>69</u>, at <u>5:30</u> p.m. in Book <u>7</u> of <u>STN</u> at page <u>49</u>, at the request of <u>Surveyor</u></p> <p><u>Fee \$5.00</u></p> <p><u>STEVE R. NELSON</u> County Recorder</p> <p>by <u>[Signature]</u> Deputy</p>	<p>JORGENSEN-TOLLADAY ENGINEERS CONSULTING CIVIL & SANITARY ENGINEERS</p> <p>MODESTO MERCED FRESNO SONORA</p> <p>DRAWN BY: <u>OAK</u></p> <p>CHECKED BY: <u>C. M.</u></p> <p>SCALE: 1" = 200'</p> <p>DATE: AUGUST 25, 1969</p> <p>APPROVED BY: <u>[Signature]</u> RCE 5905</p>	<p>PARCEL MAP FOR ASA E. MERRY</p> <p>LOTS 23 AND 24, AND PORTIONS OF LOTS 13 AND 14, OAKDALE COLONY TRACT</p> <p>SEC. 31, T.2S., R.11E., M.D.M., COUNTY OF STANISLAUS, STATE OF CALIFORNIA</p> <p>COUNTY FILE NO. 9103 JOB 1253</p>
--	--	--	--	--