

# CORNER RECORD

Document Number

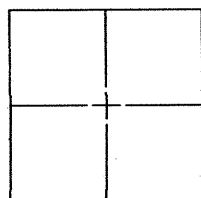
CR 9280

City of BERKELEY

County of ALAMEDA

, California

Brief Legal Description CITY OF BERKELEY MONUMENT B2411 LOCATED ON TACOMA AVE, 286' SOUTHWEST OF THE INTERSECTION OF TACOMA AVENUE AND ENSENADA AVENUE.



## CORNER TYPE

## COORDINATES (Optional)

Government Corner ☐ Control ☒  
 Meander ☐ Property ☐  
 Rancho ☐ Other ☐  
 Date of Survey 10/21/16

N. \_\_\_\_\_  
 E. \_\_\_\_\_  
 Zone \_\_\_\_\_ NAD27 ☐ NAD83 ☐  
 NAD83 Epoch \_\_\_\_\_  
 Elev. \_\_\_\_\_  
 Vet. Datum: NGVD29 ☐ NAVD88 ☐  
 Meas. Units: Metric ☐ Imperial ☐

Corner — Left as found ☒ Found and tagged ☐ Established ☐ Reestablished ☐ Rebuilt ☐

Identification and type of corner found: Evidence used to identify or procedure used to establish or reestablish the corner:  
THIS CORNER RECORD WAS PREPARED PURSUANT TO SECTION 8771.(b) OF THE CALIFORNIA BUSINESS  
BUSINESS AND PROFESSIONS CODE.

A description of the physical condition of the monument as found and as set or reset: \_\_\_\_\_  
FOUND AND SET POINTS AS SHOWN ON PAGE 2.

## SURVEYOR'S STATEMENT

This Corner Record was prepared by me or under my direction in conformance with

the Land Surveyor's Act on NOVEMBER, 11 20 16

Signed Patrick M. Rei P.L.S. or R.C.E. No. 8178



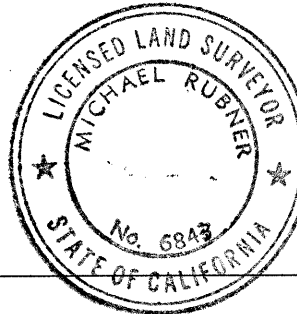
## COUNTY SURVEYOR'S STATEMENT

This Corner Record was received 11 NOVEMBER 20 16

and examined and filed 3 JANUARY 20 17

Signed Michael Rubner P.L.S. or R.C.E. No. 6843

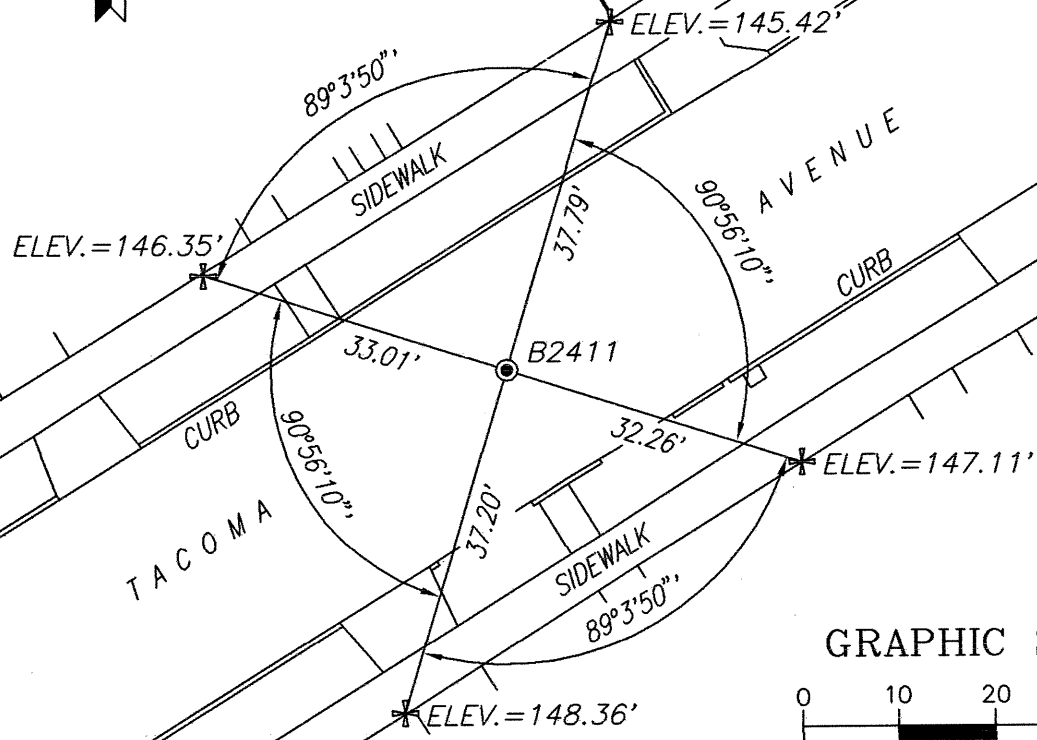
Title COUNTY SURVEYOR



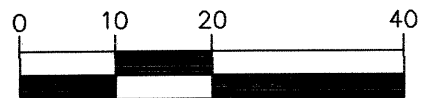
County Surveyor's Comment: \_\_\_\_\_

KSR JOB# 19653-16-06

NOTE: RP ELEVATIONS ESTABLISHED BY DIFFERENTIAL LEVELING  
UTILIZING A SOKKIA SDL30 DIGITAL LEVEL.



# GRAPHIC SCALE



( IN FEET )  
1 inch = 20 ft.

## LEGEND

- ✚ = SET CUT CROSS REFERENCE POINT (RP)
- = FOUND CITY MONUMENT B2411; 1/2" IRON PIN IN STANDARD WELL  
ELEVATION = 145.91' COB DATUM