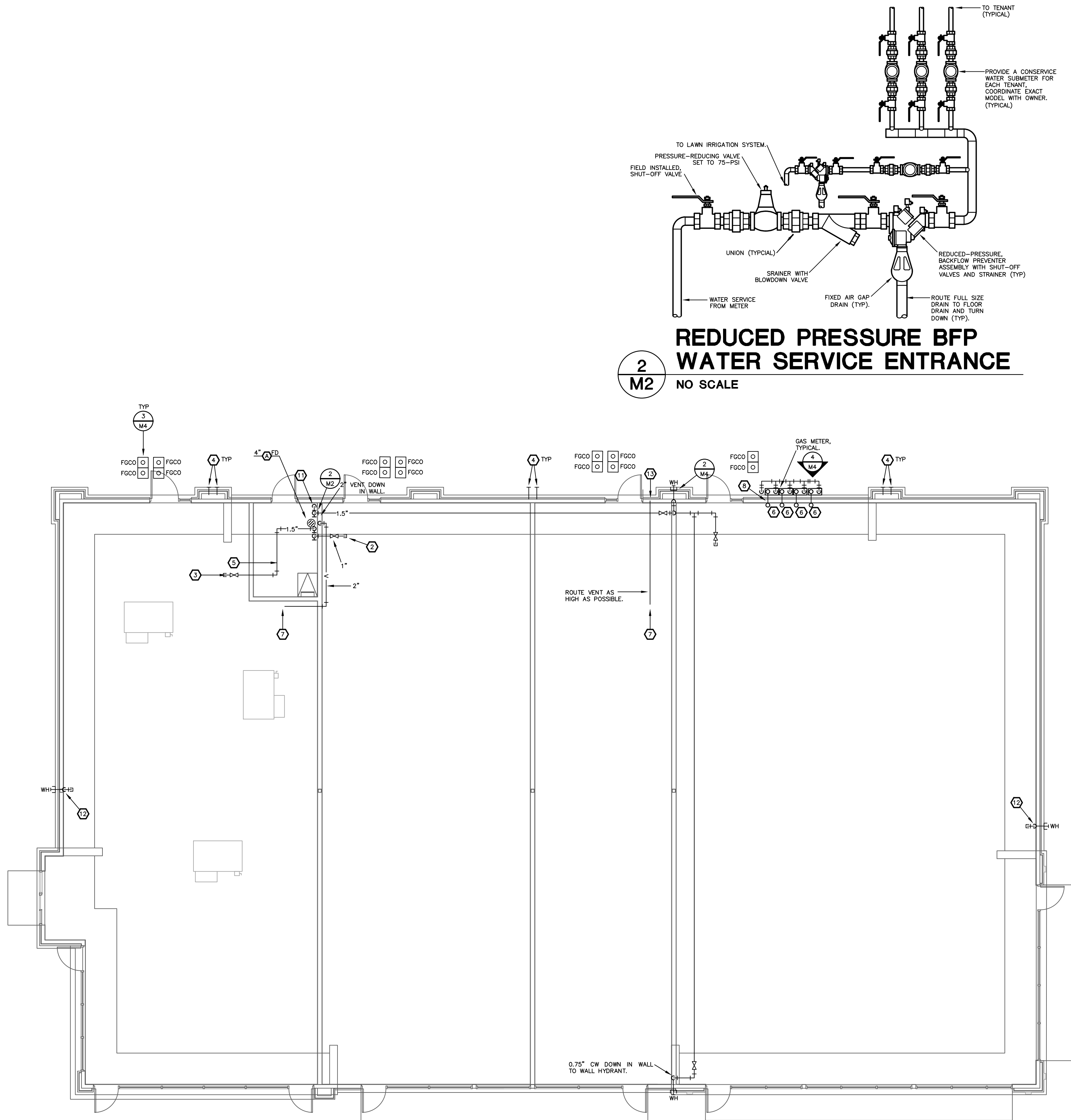


N:\A\GTHAD - Auto-cadd drawings\GTH-M2 23 Apr 2020 - 6:29 pm



1
M2 **PLUMBING PLAN**
SCALE: 1/8"=1'-0" NORTH

NOTES:

- 6" ROOF DRAIN UP TO ROOF DRAIN AND OVERFLOW ROOF DRAIN.
- 1" WATER LINE WITH SHUT OFF VALVE STUBBED INTO TENANT SPACE AND CAPPED.
- 1.5" WATER LINE WITH SHUT OFF VALVE STUBBED INTO TENANT SPACE AND CAPPED.
- 6" ROOF DRAIN AND OVERFLOW DRAIN DOWN IN WALL. EXTEND ROOF DRAIN DOWN BELOW GRADE AND TERMINATE AT DETENTION POND. REFER TO CIVIL DRAWINGS FOR CONTINUATION. OVERFLOW DRAIN TO TERMINATE THROUGH WALL 12" ABOVE GRADE. EXTEND 1/2" PAST EX. BEVELS. BOTTOM OF PIPE. WATER PROOF SEAL ALL AROUND AND PAINT TO MATCH. TERMINATE OVERFLOW DRAIN WITH 6" DOWNSPOUT NOZZLE. COLOR BY ARCHITECT.
- DO NOT ROUTE WATER LINE ABOVE ELECTRICAL PANELS. REFER TO POWER PLAN.
- GAS SUPPLY PIPING UP TO EACH TENANT SPACE.
- 3" VENT UP TO 3" VTR. CAP AT UNDERSIDE OF STRUCTURE FOR CONNECTION BY TENANT.
- ENTER GAS INTO BUILDING DIRECTLY FROM METER. TYPICAL. GAS PIPING EXPOSED UP ALONG OUTSIDE WALL IS PROHIBITED.
- 2.5" GAS UP.
- 1" GAS UP.
- 2" WATER SERVICE DOWN THRU FLOOR. 1" LAWN IRRIGATION WATER DOWN THRU FLOOR (BELOW WATER SERVICE).
- 0.75" CW DOWN TO WALL HYDRANT AND CAP FOR FUTURE CONNECTION. LOCATE DROP DOWN AT LOCATION OF FUTURE INTERSECTING TENANT WALL. VERIFY LOCATION OF DROP WITH TENANT INFILL PLANS BEFORE INSTALLATION.
- 2" VENT DOWN IN WALL.

GENERAL NOTES:

- ALL PLUMBING WORK SHALL BE IN ACCORDANCE WITH THE INTERNATIONAL PLUMBING CODE AS ADOPTED BY THE AUTHORITIES HAVING JURISDICTION.
- PLANS ARE DIAGRAMMATIC AND SHALL NOT BE SCALED. REFER TO ARCHITECTURAL DRAWINGS FOR DIMENSIONS.
- INSULATE ALL DOMESTIC WATER PIPING WITH 1/2" AP ARMAFLEX. ALL INSULATION MATERIALS SHALL HAVE A FLAME SPREAD RATING NO GREATER THAN 25 AND A SMOKE DEVELOPED RATING NO GREATER THAN 50.
- WALL HYDRANTS SHALL BE WOODFORD MODEL 65 FREEZELESS WALL HYDRANT WITH INTEGRAL VACUUM BREAKER. EQUIVALENT BY WADE, ZUR, J.R. SMITH OR JONESPEC.
- FLOOR DRAIN TYPE "A" SHALL BE J.R. SMITH MODEL 2005-A INSIDE CAULK CAST IRON BODY FLOOR DRAIN WITH INTEGRAL FLASHING COLLAR AND ADJUSTABLE ROUND NICKEL BRONZE STRAINER HEAD. NEOPRENE PUSH ON GASKET MAY BE USED IN LIEU OF INSIDE CAULK AT CONTRACTOR'S OPTION. PROVIDE A P-TRAP FOR ALL FLOOR DRAINS. EQUIVALENT FLOOR DRAINS BY JONESPEC, WADE OR ZUR.
- DOWNSPOUT NOZZLES SHALL BE J.R. SMITH SERIES 25010 CAST BRONZE NOZZLE WITH LOOSE WALL FLANGE. EQUIVALENT BY JONESPEC, WADE, OR ZUR.
- ALL SHUTOFF VALVES ON DOMESTIC WATER SHALL BE APOLLO SERIES 70-100 BRONZE FULL PORT BALL VALVE 600 PSI-WOG WITH TEFLON SEATS, BRONZE BALL, SILICON BRONZE STEM INSULATED HANDLE AND SCREWED OR SOLDER ENDS. EQUIVALENT VALVES BY NIBCO-SCOTT, CRANE, FAIRBANKS, HALE, MUESCO STOCKHAM, KENNEDY, KRISTONE, OR POWELL.
- CONTRACTOR SHALL CONTACT THE LOCAL WATER DEPARTMENT AND ARRANGE FOR WATER SERVICE AND FIRE SERVICE AS INDICATED ON DRAWINGS. INCLUDE ALL COSTS, CHARGES, FEES, ETC. INCURRED BY LOCAL AUTHORITIES INTO BID. PROVIDE ALL MATERIALS AS REQUIRED BY LOCAL AUTHORITIES FOR WATER SERVICE INSTALLATION. ALL WORK SHALL BE IN ACCORDANCE WITH THE REQUIREMENTS OF LOCAL AUTHORITIES.
- CONTRACTOR SHALL CONTACT THE LOCAL GAS COMPANY AND ARRANGE FOR GAS SERVICE AS INDICATED ON DRAWINGS. INCLUDE ALL COSTS, CHARGES, FEES, ETC. INCURRED BY UTILITY COMPANY INTO BID. PROVIDE ALL MATERIALS AS REQUIRED BY LOCAL AUTHORITIES FOR GAS SERVICE INSTALLATION. ALL WORK SHALL BE IN ACCORDANCE WITH THE REQUIREMENTS OF LOCAL AUTHORITIES.



THIS DRAWING has been prepared by the Architect, or prepared under his direct supervision as an instrument of service and is intended for use only on this project. All Drawings, Specifications, ideas and designs, including the overall layout, form, arrangement, and composition of spaces and elements portrayed, constitute the original, unpublished work of the Architect. Any reproduction, use, or disclosure of the information contained herein without the written consent of the Architect is strictly prohibited.

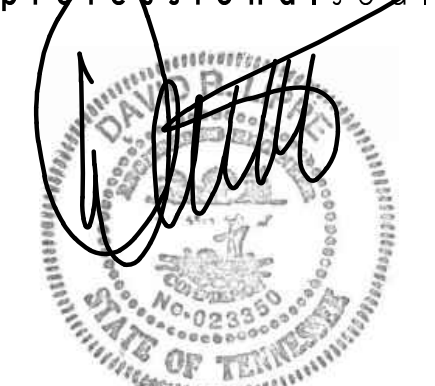
© 2021 H.C. KLOVER ARCHITECT
THE ARCHITECT DISCLAIMS responsibility for the existing building structure, site conditions, existing construction elements, or any documents, drawings or other instruments used for any part of this Project which do not bear the Architect's seal. The Architect's services are undertaken only in the interest of the Project Owner. No selection is assumed by the Architect for the benefit of any other entity.
RELATED DOCUMENTS: This Drawing is a single component of an integrated set of Construction Documents. General and Supplementary Conditions of the Contract, General Requirements, Specifications and other Drawings may affect the Work described. Failure to review and approve the design intent of the Work of the Construction Documents does not relieve the Contractor from providing a complete Project.
COMPLY WITH all laws, codes, ordinances and regulations with authorities having jurisdiction and with requirements of the Landlord, if applicable. Do not start Work until all permits and required approvals are obtained.
VERIFY ACTUAL CONDITIONS and dimensions prior to construction. Commencement of work constitutes verification and acceptance of all existing conditions. Application of a material or equipment item to Work installed by others constitutes acceptance of that Work, and assumption of responsibility for satisfactory installation.
DIMENSIONS SHOWN are to finish face of a material unless otherwise indicated. OBTAIN & VERIFY dimensions - IN NET SIZE. Group notes otherwise stated.

project title

CFT RETAIL BUILDING
2901 S. CHURCH STREET
MURFREESBORO, TN 37127

project number
20045.003
drawing issuance
PERMIT/BID SET 6.1.2021
drawing revisions
No. Description Date:

professional seal



drawing title
PLUMBING PLAN
drawing number

M2

rtm
engineering consultants
14901 Quorum Drive, Suite 565
Dallas, TX 75254
913.303.0063 | www.rtmec.com
Tennessee COA: 4555