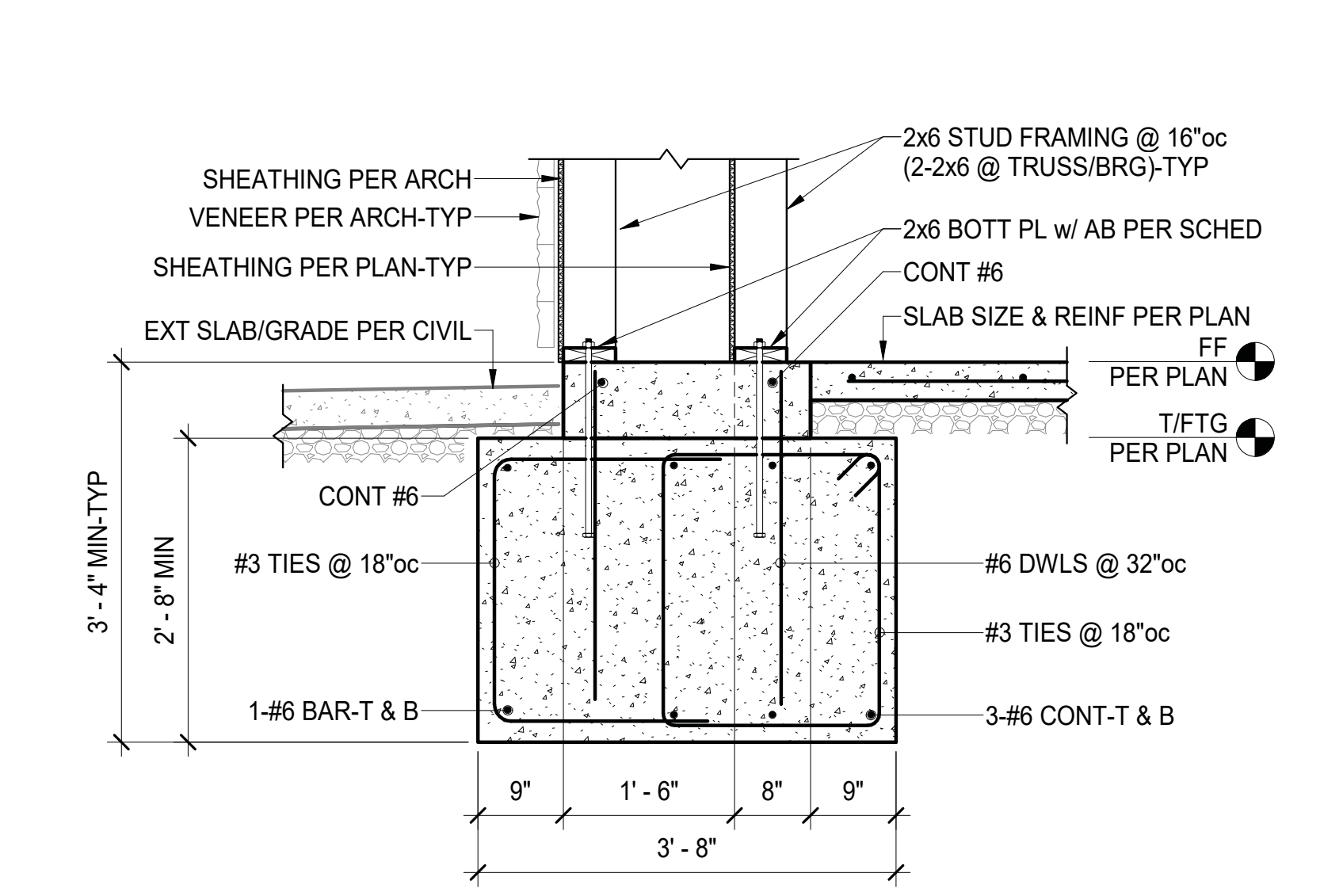
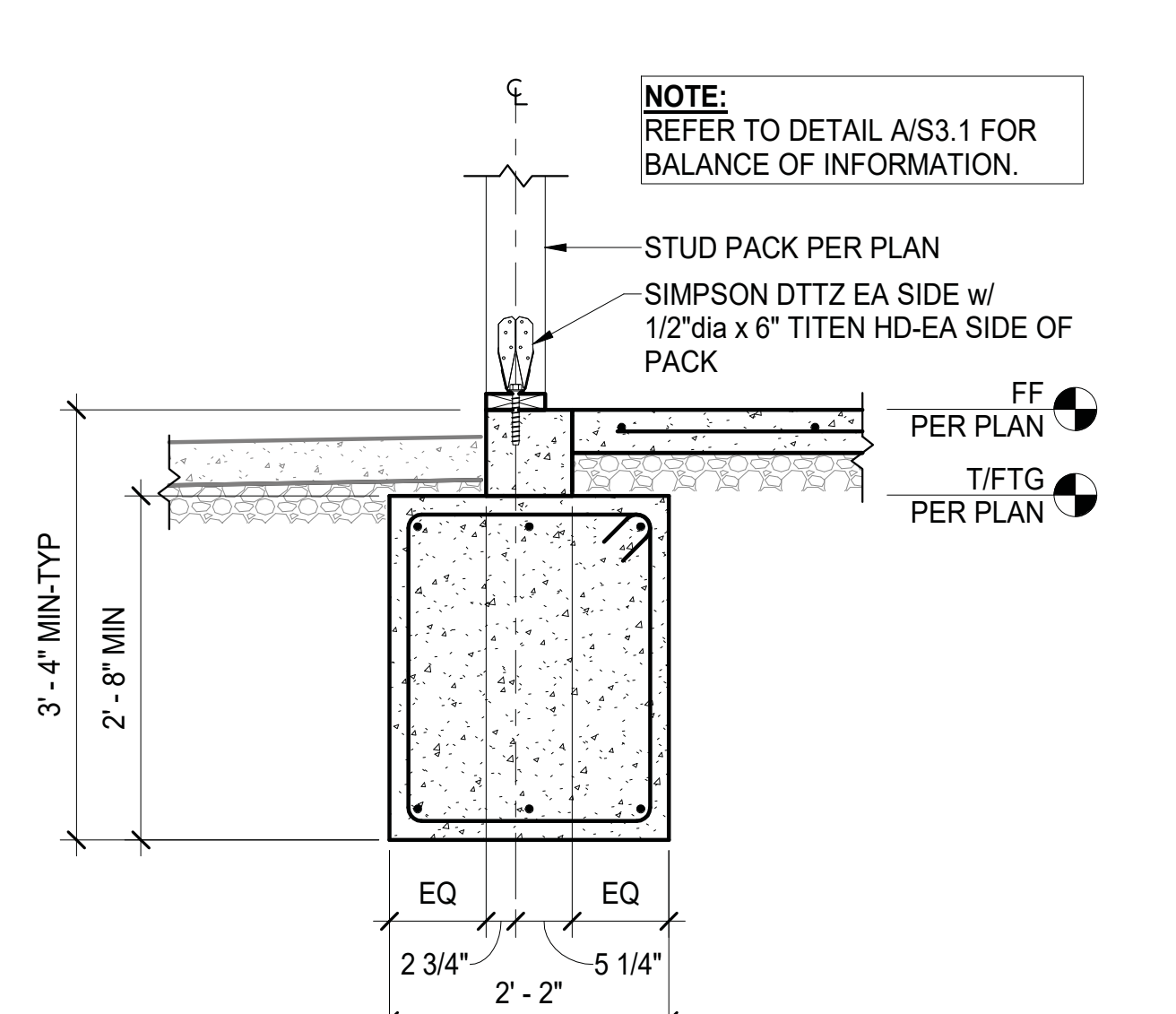
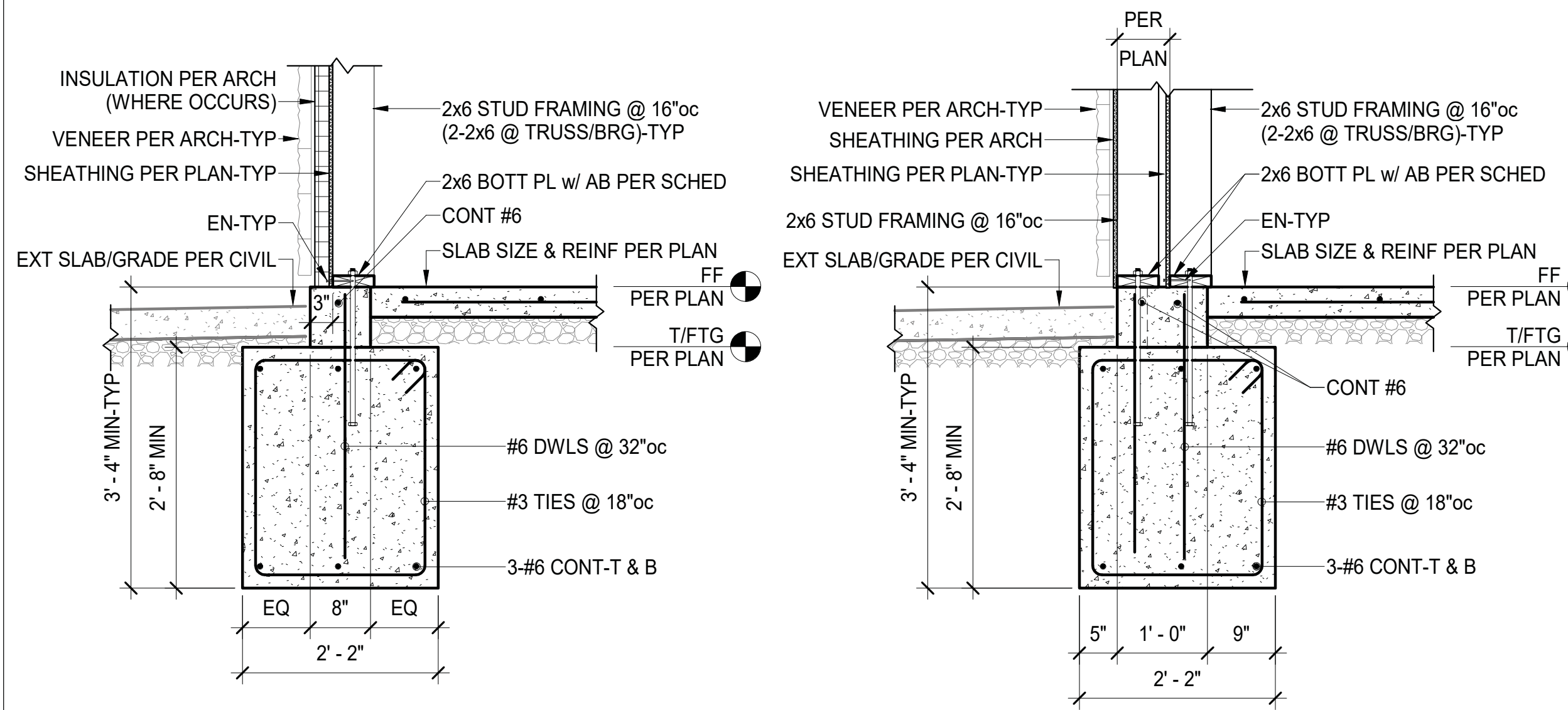


A FOUNDATION SECTION
S3.1 3/4" = 1'-0"

B FOUNDATION SECTION
S3.1 3/4" = 1'-0"

C FOUNDATION SECTION
S3.1 3/4" = 1'-0"

D FOUNDATION SECTION
S3.1 3/4" = 1'-0"

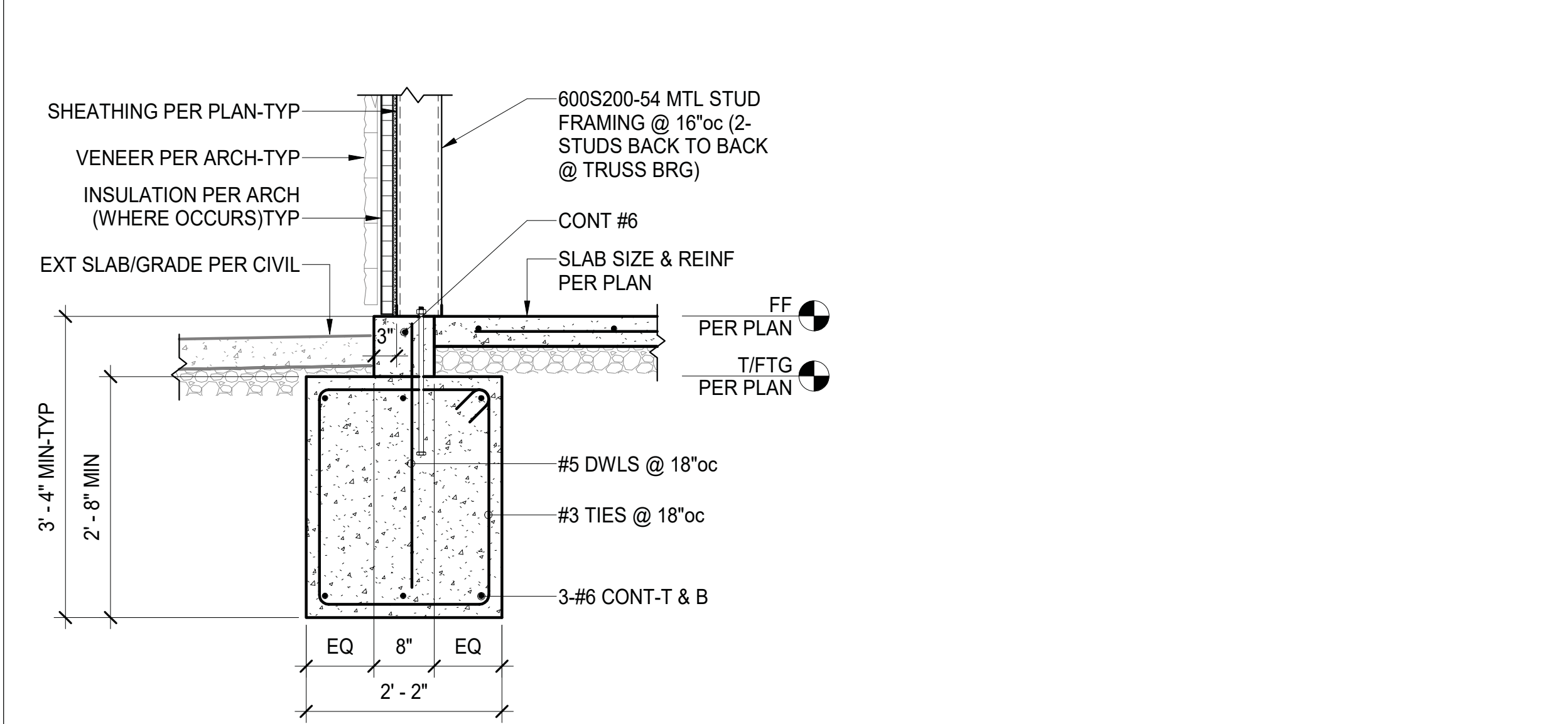


E FOUNDATION SECTION
S3.1 3/4" = 1'-0"

F FOUNDATION SECTION
S3.1 3/4" = 1'-0"

G FOUNDATION SECTION
S3.1 3/4" = 1'-0"

H FOUNDATION SECTION
S3.1 3/4" = 1'-0"



I FOUNDATION SECTION
S3.1 3/4" = 1'-0"

J FOUNDATION SECTION
S3.1 3/4" = 1'-0"

K FOUNDATION SECTION
S3.1 3/4" = 1'-0"

L FOUNDATION SECTION
S3.1 3/4" = 1'-0"



PANDA EXPRESS, INC.
1683 Walnut Grove Ave.
Rosemead, California
91770
Telephone: 626.799.9898
Facsimile: 626.372.8288

All ideas, designs, arrangement and plans indicated or represented by this drawing are the property of Panda Express Inc. and were created for use on this specific project. None of these ideas, designs, arrangements or plans may be used by or disclosed to any person, firm, or corporation without the written permission of Panda Express Inc.

ISSUE DATE:
04/27/21 WALMART REVIEW
05/05/21 ISSUE FOR PERMIT

DRAWN BY: DLP

PANDA PROJECT #: S8-22-D8044
ENG PROJECT #: NEW-IN-01-21



5/6/21



15450 S OUTER FORTY DRIVE, SUITE 300
CHESTERFIELD, MO 63017

PANDA EXPRESS

TRUE WARM & WELCOME
STATE ST. & NEW RD.
GREENFIELD, IN 46140

MISSOURI
CASE
Engineering Inc.

796 Merus Court
St. Louis, MO 63026
T 636.349.1600
F 636.349.1730
CERTIFICATE OF AUTHORITY NO. 201808201274213

S3.1

SECTIONS

TRUE WARM & WELCOME 2300 R4