

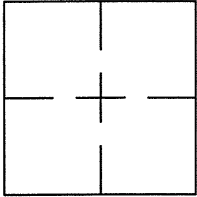
CORNER RECORD

Document Number CR 8570

City of OAKLAND

County of ALAMEDA, California

Brief Legal Description WELL MONUMENT LOCATED WITHIN GOLF LINKS ROAD.



CORNER RECORD

Government Corner ☐ Control ☐
 Meander ☐ Property ☐
 Rancho ☐ Other ☒
 Date of Survey 6/22/16

COORDINATES
(Optional)

N. 2102061.4±
 E. 6089625.1±
 Zone 3 Datum NAD 83
 Elev. _____

Corner — Left as found ☒ Found and tagged ☐ Established ☐ Reestablished ☐ Rebuilt ☐

Identification and type of corner found: Evidence used to identify or procedure used to establish or reestablish the corner:
FOUND 1/4" PIN IN MONUMENT WELL LOCATED WITHIN GOLF LINKS ROAD.

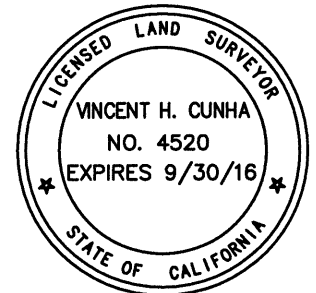
THIS POINT WAS REFERENCED PRIOR TO A CONSTRUCTION PROJECT IN THE VICINITY.

A description of the physical condition of the monument as found and as set or reset: _____
FOUND AND SET POINTS AS SHOWN ON PAGE 2.

THE TIES SHOWN HEREON ARE FOR THE PURPOSE OF PERPETUATING FOUND MONUMENTATION.
NO CLAIM IS MADE AS TO THE RELATIONSHIP OF THE POINTS OR LINES SHOWN HEREON TO
TRUE BOUNDARY LOCATIONS.

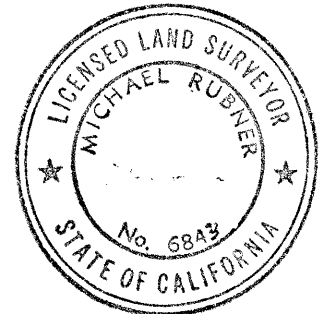
SURVEYOR'S STATEMENT

This Corner Record was prepared by me or under my direction in conformance with
 the Land Surveyors' Act on July, 20 16.
 Signed Vincent H. Cunha L.S. Number LS 4520
 VINCENT H. CUNHA



COUNTY SURVEYOR'S STATEMENT

This Corner Record was received 8 JULY 2016 and examined
 and filed 25 JULY 2016.
 Signed Michael Rubner Title COUNTY SURVEYOR



County Surveyor's Comment _____

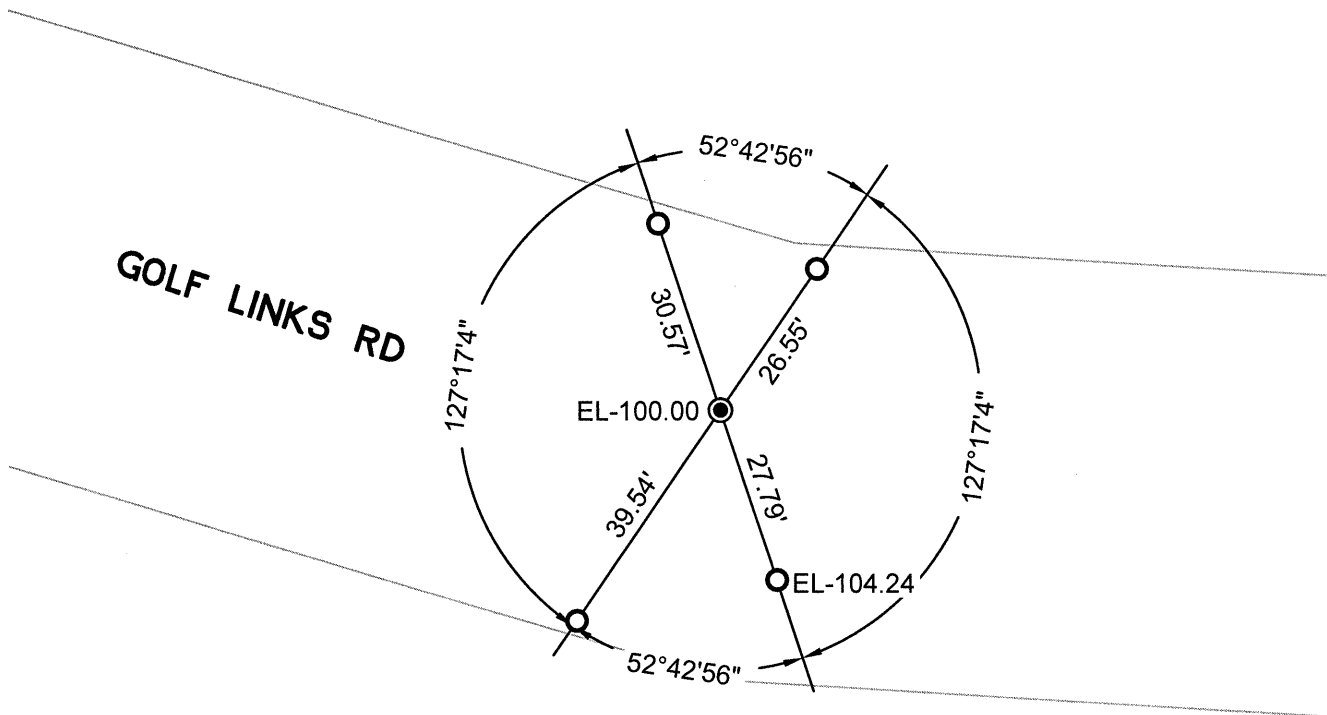


SCALE: 1"=30'

LEGEND

- FOUND 1/4" PIN IN MONUMENT WELL
- ⊗ SET CUT CROSS IN WALK
- ✕ SET CUT CROSS IN CURB
- SET REBAR & CAP STAMPED "CEI RP"

1959 REFERENCE STREET ADDRESS



ELEVATIONS SHOWN
HEREON ARE ASSUMED.

216040-GOLF-CR26