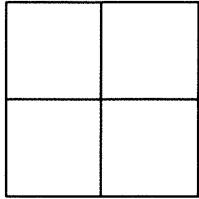


CORNER RECORD

Agency Index BK 117 PG 68
Document Number CR 12051
County of ALAMEDA, California

City of FREMONT

Brief Legal Description WELL MONUMENT LOCATED WITHIN ARGONAUT WAY
NEAR THE INTERSECTION OF ARGONAUT CT



CORNER TYPE

Government Corner ☐ Control ☒
Meander ☐ Property ☐
Rancho ☐ Other ☐

Date of Survey 7/20/18

COORDINATES (Optional)

N. 2024891.7± E. 6128966.0±

Elevation _____

Units Metric ☐ U.S. Survey Foot ☒

Horizontal Datum _____

Zone _____ Epoch Date _____

Vertical Datum _____

☐ Complies with Public Resources Code §§8801-8819

☐ Complies with Public Resources Code §§8890-8902

PLS Act Ref: ☐ 8765(d) ☒ 8771 ☐ 8773 ☐ Other:

Corner/Monument: ☒ Left as found ☐ Established ☐ Rebuilt ☒ Pre-Construction
☐ Found and tagged ☐ Reestablished ☒ Referenced ☐ Post-Construction

Narrative of corner identified and monument as found, set, reset, replaced, or removed:

☐ See sheet #2 for description(s) :

FOUND BRASS DISC AND PUNCH IN MONUMENT WELL. ILLEGIBLE.
MONUMENT PAVED OVER. EXCAVATED PRIOR TO REFERENCING. FOUND 2" BELOW GRADE.

FOUND AND SET POINTS AS SHOWN ON PAGE 2.

THIS POINT WAS REFERENCED PRIOR TO A CONSTRUCTION PROJECT IN THE VICINITY.

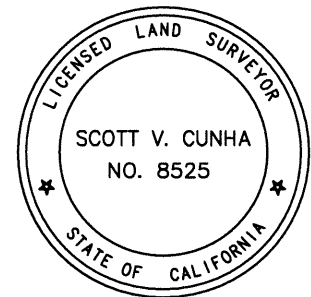
THE TIES SHOWN HEREON ARE FOR THE PURPOSE OF PERPETUATING FOUND MONUMENTATION.
NO CLAIM IS MADE AS TO THE RELATIONSHIP OF THE POINTS OR LINES SHOWN HEREON TO TRUE
BOUNDARY LOCATION.

SURVEYOR'S STATEMENT

This Corner Record was prepared by me or under my direction in conformance with

the Professional Land Surveyors' Act on JULY 26, 2018.

Signed Scott V. Cunha P.L.S. or R.C.E. No. LS 8525
SCOTT V. CUNHA



COUNTY SURVEYOR'S STATEMENT

This Corner Record was received 16 AUGUST 2018

and examined and filed 25 JANUARY 2019.

Signed Michael Rubner P.L.S. or R.C.E. No. 6843

Title COUNTY SURVEYOR

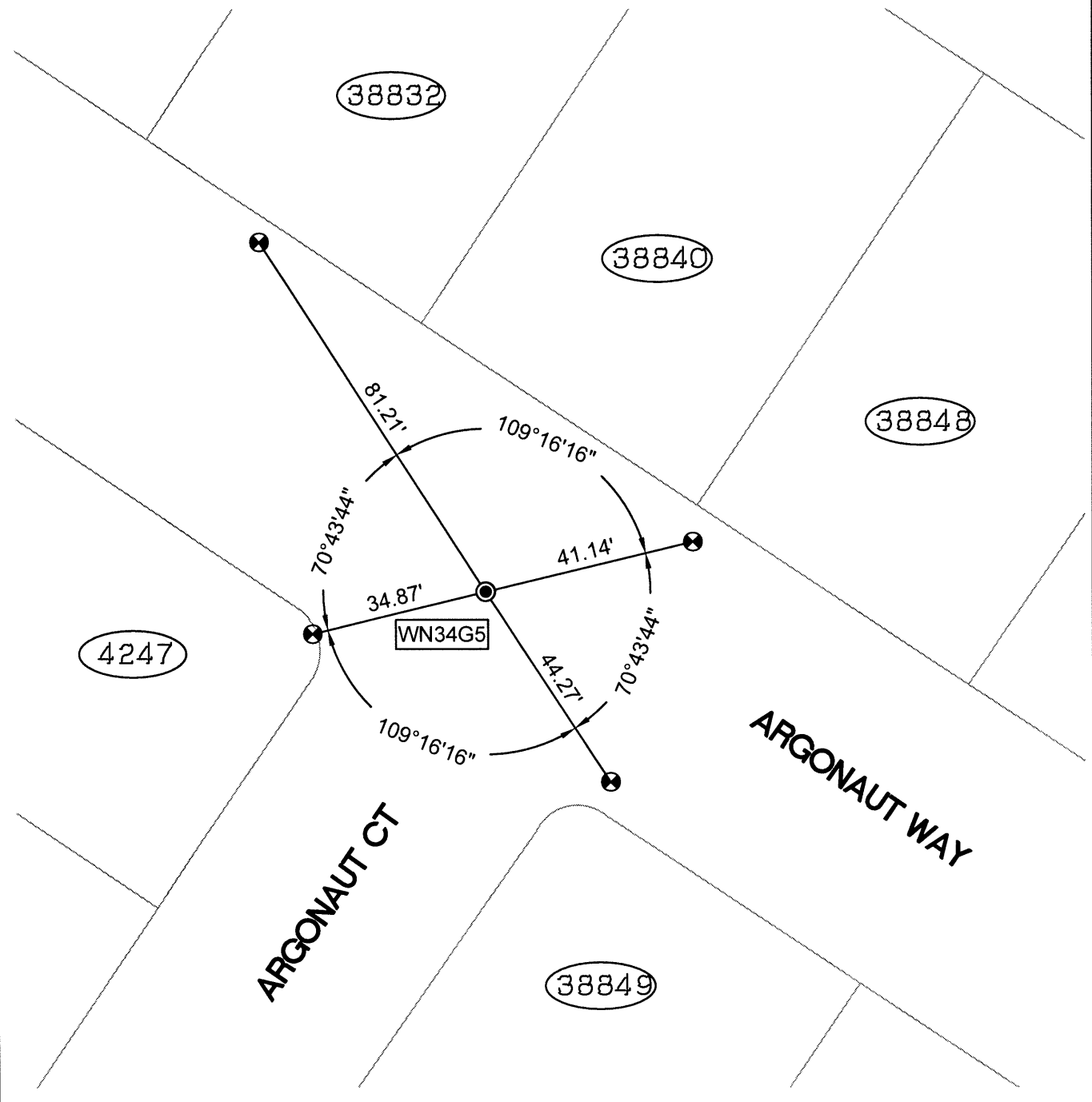
County Surveyor's Comment



SCALE: 1"=30'

LEGEND

- FOUND BRASS DISC WITH PUNCH IN MONUMENT WELL, ILLEGIBLE
- ⊗ SET CUT CROSS IN WALK
- AA##A# ALAMEDA COUNTY MONUMENT ID
- 19592 REFERENCE STREET ADDRESS



218072-Arg_Lex-CR-07