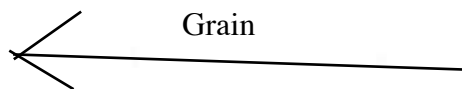


side seam

Front - part B

Match marks on pattern and tape
part A and B together

Seam allowance of 1 cm
included



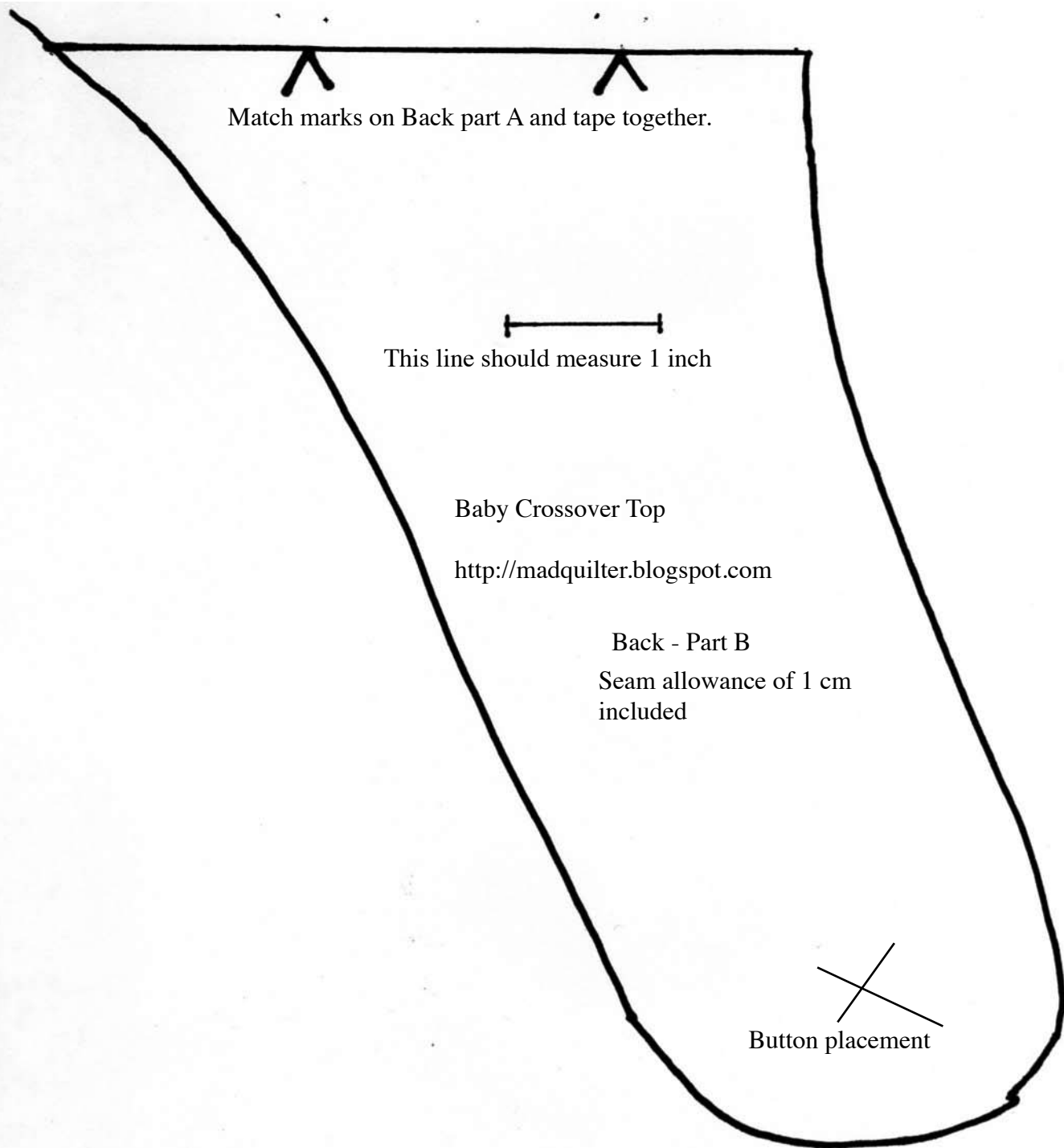
1 inch

this line should measure
1 inch. Use to check the
pattern has printed at the
correct size.

Baby Crossover Top

<http://madquilter.blogspot.com>

Place on fold



Match marks on Back part A and tape together.

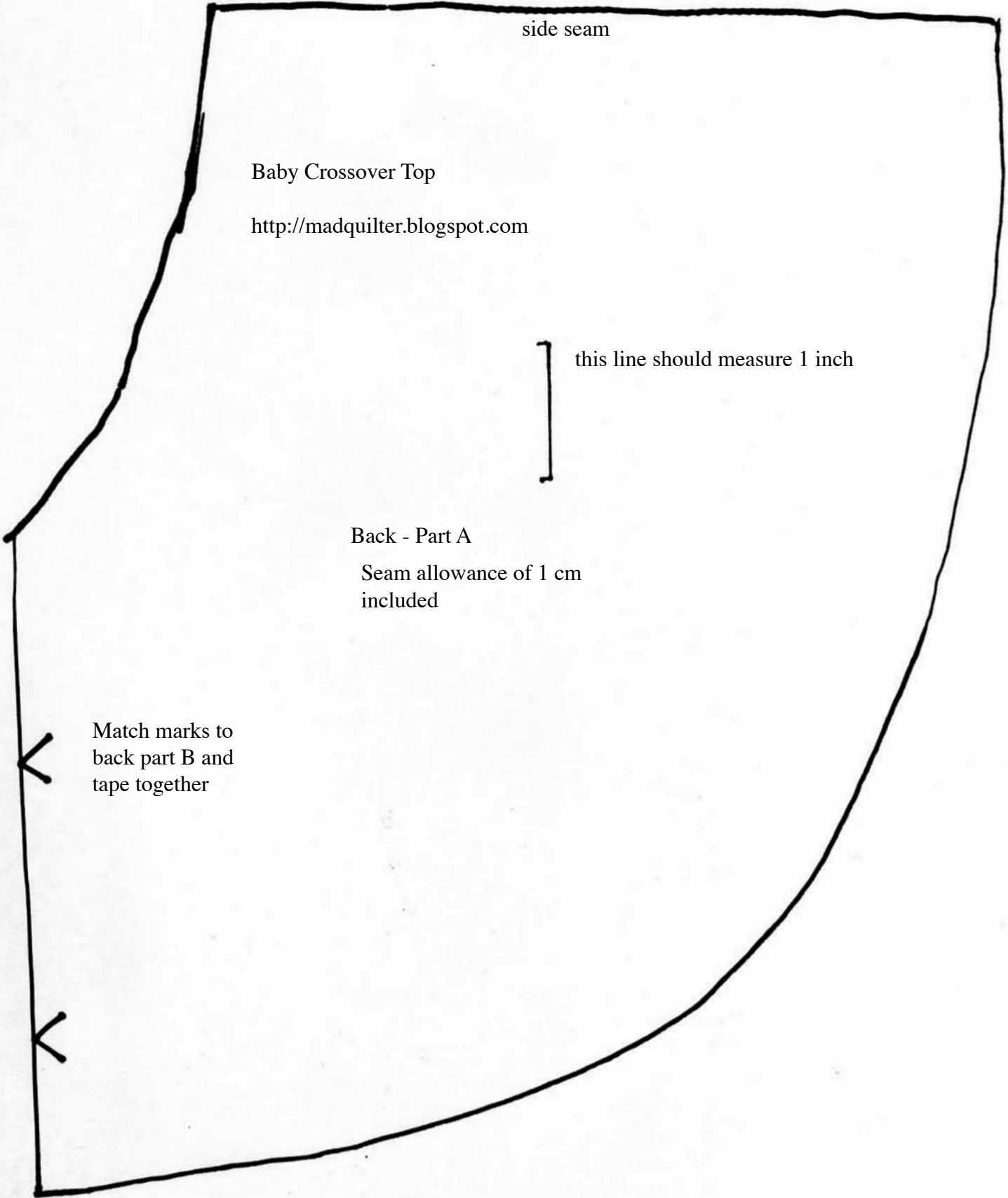
This line should measure 1 inch

Baby Crossover Top

<http://madquilter.blogspot.com>

Back - Part B
Seam allowance of 1 cm
included

Button placement



A hand-drawn pattern for the back of a baby crossover top. The pattern is a large, roughly rectangular shape with a curved bottom edge and a curved left side. A vertical line near the top left corner is labeled 'side seam'. A horizontal line near the top center is labeled 'this line should measure 1 inch'. Two small 'V' marks on the left side are labeled 'Match marks to back part B and tape together'. The text 'Baby Crossover Top' and the URL 'http://madquilter.blogspot.com' are in the upper left. The text 'Back - Part A' and 'Seam allowance of 1 cm included' are in the center.

side seam

Baby Crossover Top

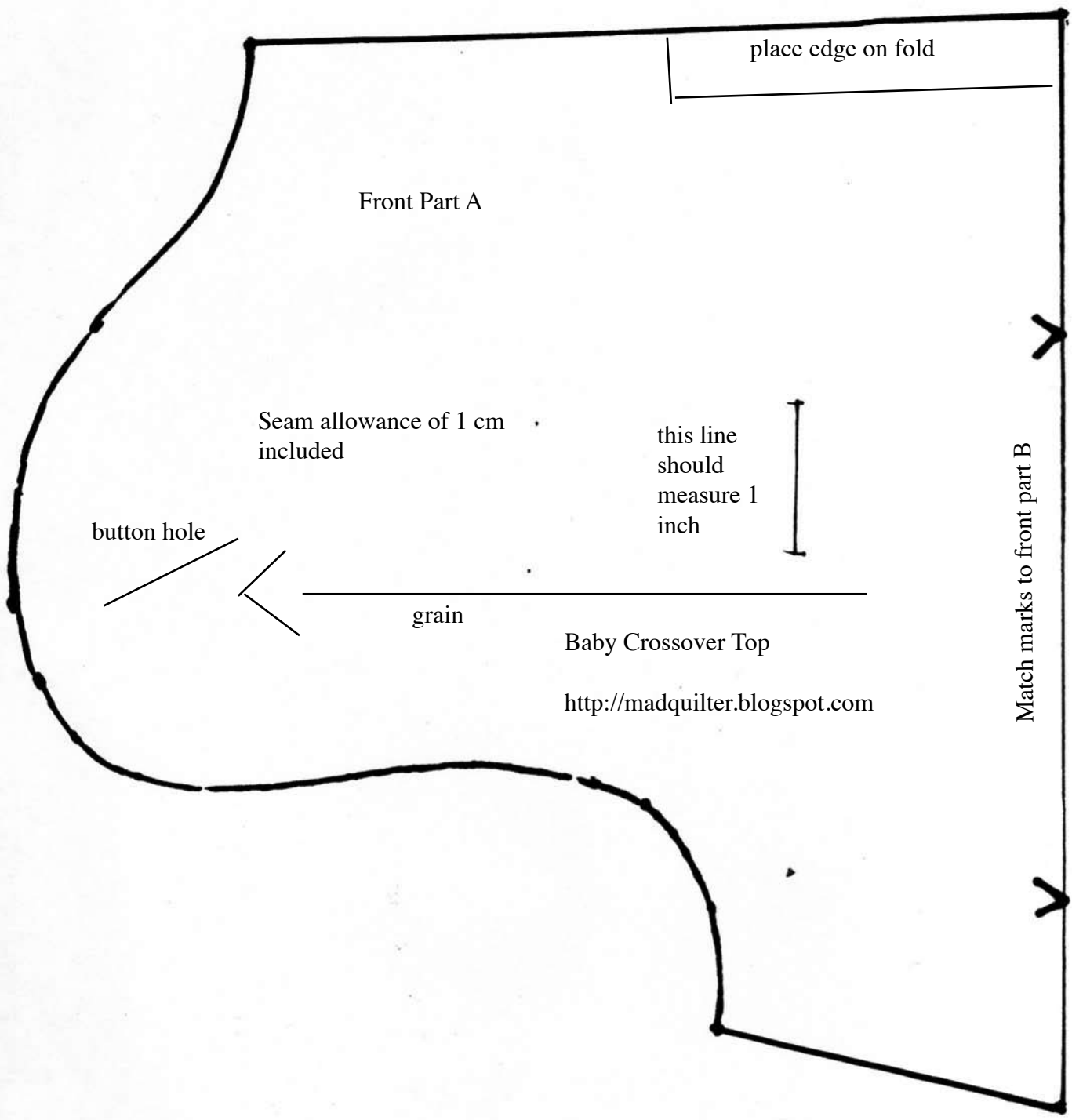
<http://madquilter.blogspot.com>

this line should measure 1 inch

Back - Part A

Seam allowance of 1 cm
included

Match marks to
back part B and
tape together



Front Part A

Seam allowance of 1 cm
included

button hole

grain

this line
should
measure 1
inch

place edge on fold

Baby Crossover Top

<http://madquilter.blogspot.com>

Match marks to front part B