

RECORD OF SURVEY NO. 32-57

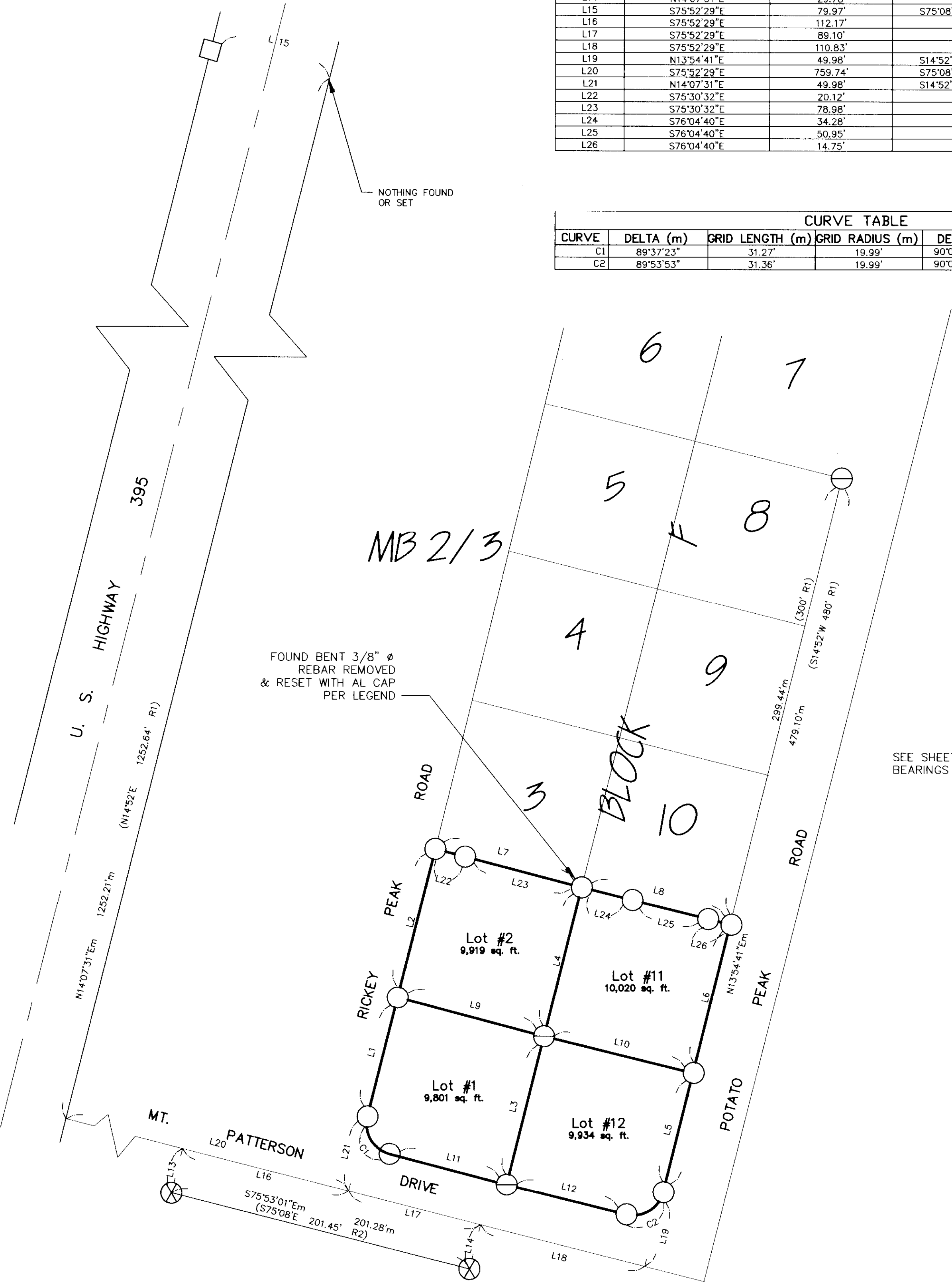
BEING A PORTION OF SECTION 4, TOWNSHIP 4 NORTH, RANGE 25 EAST, MOUNT DIABLO MERIDIAN, BEING LOTS 1,2,11 & 12, BLOCK F OF TRIDENTATA TERRACE ESTATES AS FILED IN BOOK 2 OF MAPS, PAGE 3, COUNTY OF MONO, STATE OF CALIFORNIA



SCALE: 1"= 50'

LINE TABLE				
LINE	GRID BEARING (m)	GRID DISTANCE (m)	BEARING R(*)	DIST R(*)
L1	N14°07'31"E	79.97'	N14°52'E(R1)	80' (R1)
L2	N14°07'31"E	99.97'	N14°52'E(R1)	100' (R1)
L3	N14°03'19"E	99.59'	N14°52'E(R1)	100' (R1)
L4	N14°08'16"E	100.24'	N14°52'E(R1)	100' (R1)
L5	N13°54'41"E	79.85'	N14°52'E(R1)	80' (R1)
L6	N13°54'41"E	99.81'	N14°52'E(R1)	100' (R1)
L7	S75°30'32"E	99.10'	N75°08'W(R1)	100' (R1)
L8	S76°04'40"E	99.98'	N75°08'W(R1)	100' (R1)
L9	S75°21'13"E	99.08'	N75°08'W(R1)	100' (R1)
L10	S76°19'06"E	100.37'	N75°08'W(R1)	100' (R1)
L11	S75°29'55"E	79.34'	N75°08'W(R1)	80' (R1)
L12	S76°11'26"E	80.66'	N75°08'W(R1)	80' (R1)
L13	N14°07'31"E	29.81'		
L14	N14°07'31"E	29.78'		
L15	S75°52'29"E	79.97'	S75°08'E(R3)	80'(R3)
L16	S75°52'29"E	112.17'		
L17	S75°52'29"E	89.10'		
L18	S75°52'29"E	110.83'		
L19	N13°54'41"E	49.98'	S14°52'W(R1)	50'(R1)
L20	S75°52'29"E	759.74'	S75°08'E(R1)	760'(R1)
L21	N14°07'31"E	49.98'	S14°52'W(R1)	50'(R1)
L22	S75°30'32"E	20.12'		
L23	S75°30'32"E	78.98'		
L24	S76°04'40"E	34.28'		
L25	S76°04'40"E	50.95'		
L26	S76°04'40"E	14.75'		

CURVE TABLE						
CURVE	DELTA (m)	GRID LENGTH (m)	GRID RADIUS (m)	DELTA R(*)	LNTH R(*)	RAD R(*)
C1	89°37'23"	31.27'	19.99'	90°00'00" (R1)	31.42' (R1)	20' (R1)
C2	89°53'53"	31.36'	19.99'	90°00'00" (R1)	31.42' (R1)	20' (R1)



SEE SHEET 1 OF 2 FOR LEGEND, BASIS OF BEARINGS AND RECORD REFERENCES.

DETAIL

RS Box 927A