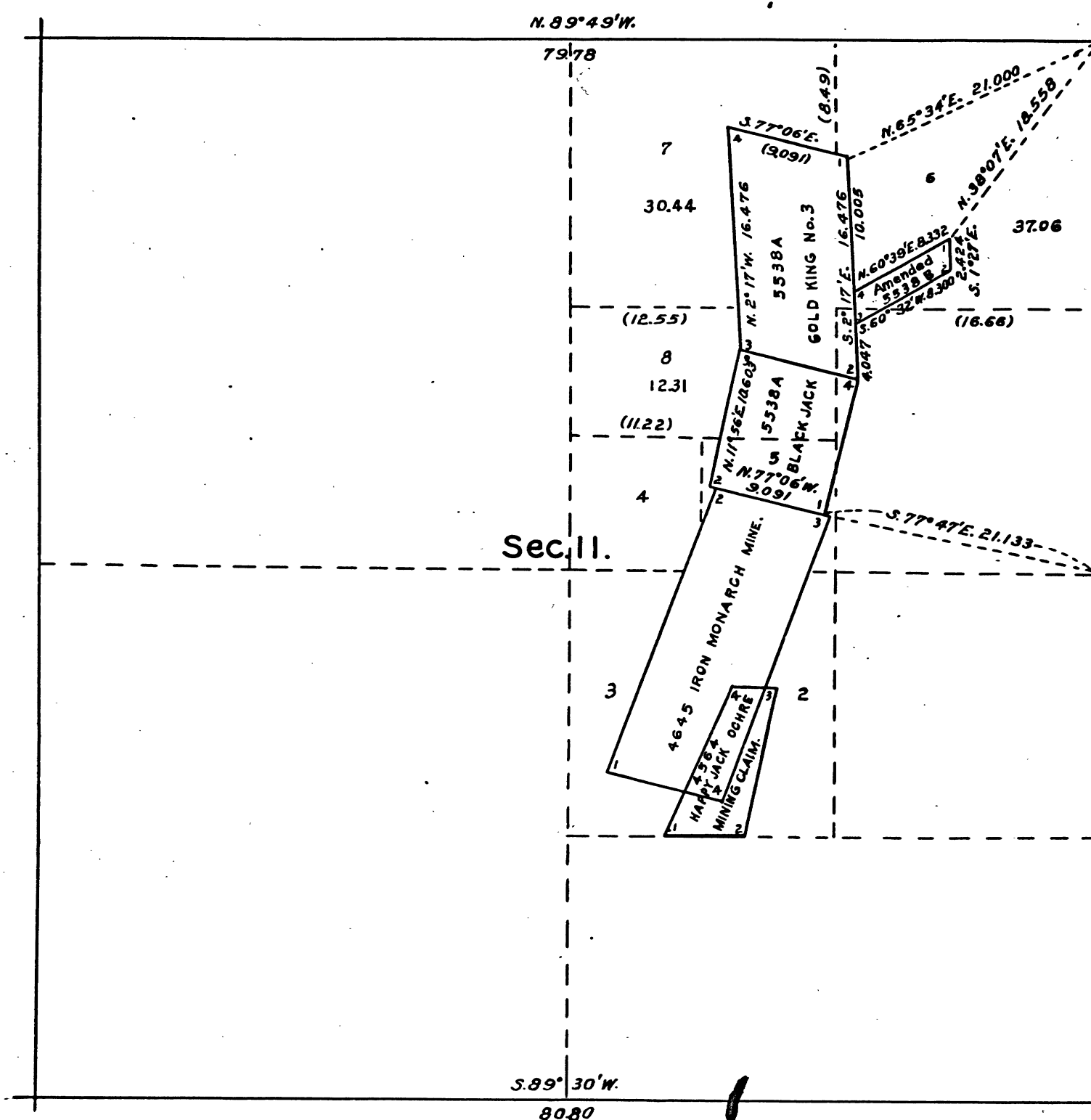


TOWNSHIP N^o 4 NORTH, RANGE N^o 10 EAST, MOUNT DIABLO MERIDIAN, CALIFORNIA.

SUPPLEMENTAL PLAT OF SECTION 11.



Scale: 10 Chains (or 660 Ft.) to an Inch.



Public Survey Office
San Francisco, California, December 30, 1930.

The above supplemental plat of Sec. 11, Township No. 4 North, Range No. 10 East, of the Mount Diablo Meridian, California, based upon the plats approved September 4, 1884, November 11, 1908 and August 3, 1922, showing lotting of fractional areas created by the segregation of the Gold King No. 3 and Black Jack lodes of Mineral Survey No. 5538a and the Gold King No. 3 millsite of amended Mineral Survey No. 5538b, to accommodate homestead entry Sacramento 010937 and enlarged homestead entry Sacramento 015050, prepared in accordance with instructions contained in the Commissioner's letter "H" dated December 3, 1930, is hereby approved.

Frank C. Barker
Office Cadastral Engineer.

Department of the Interior
General Land Office
Washington, D. C., January 10, 1931.

The amended lottings represented by this supplemental plat having been correctly made in accordance with the regulations of this office, the plat is hereby accepted.

Thomas C. Havill
Assistant Commissioner.

41 305

REGISTER

RECEIPT

Feb. 16. 1931.

CHAINS

TAN DIABLO

BLM 144