

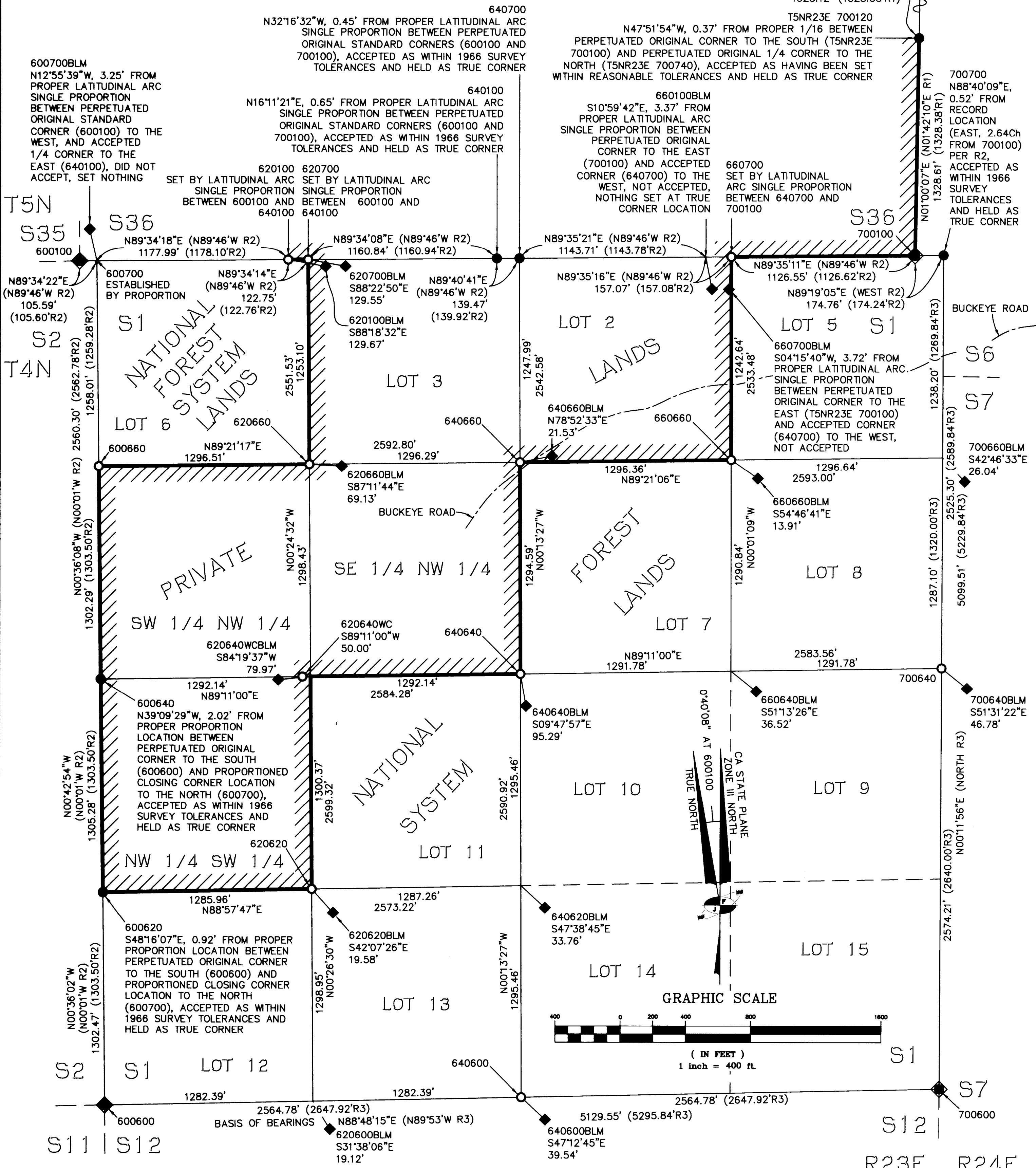
# RECORD OF SURVEY No. 32-82

SHEET 2 OF 6 SHEETS

IN THE UNINCORPORATED TERRITORY OF THE COUNTY OF MONO, STATE OF CALIFORNIA, BEING SECTION 1, TOWNSHIP 4 NORTH, RANGE 23 EAST, TOGETHER WITH THE EAST LINE OF SECTION 36, TOWNSHIP 5 NORTH, RANGE 23 EAST, AND A PORTION OF THE HOOVER WILDERNESS BOUNDARY IN SECTION 15, TOWNSHIP 4 NORTH, RANGE 23 EAST, MOUNT DIABLO MERIDIAN

## LEGEND:

- SET USFS ALUMINUM MONUMENT: A 3/4" DIAMETER CAP ON A 2 1/2" DIAMETER POST, 30 INCHES LONG, UNLESS OTHERWISE NOTED
- ◆ FOUND BLM MONUMENT AS NOTED (PERPETUATED ORIGINAL CORNER)
- FOUND BLM MONUMENT AS NOTED
- ◆ FOUND BLM MONUMENT AS NOTED, NOT HELD (LOCATIONS ARE EXAGGERATED FOR CLARITY)
- /// TOIYABE NATIONAL FOREST BOUNDARY POSTED AND MARKED THIS SURVEY
- ESTABLISHED SECTIONAL LINES
- ROADS OR PATHS AS NOTED
- R1 DEPENDENT RESURVEY, SUBDIVISION OF SECTIONS, AND METES-AND-BOUNDS SURVEY, T4N, R24E, MDM, APPROVED BY THE CHIEF CADASTRAL SURVEYOR - CALIFORNIA, U.S. DEPARTMENT OF THE INTERIOR, BUREAU OF LAND MANAGEMENT, ON SEPTEMBER 23, 1998
- R2 1966 BLM DEPENDENT RESURVEY AND SUBDIVISION, T4N, R23E, MDM, APPROVED BY THE CHIEF, DIVISION OF CADASTRAL SURVEY, U.S. DEPARTMENT OF THE INTERIOR, BUREAU OF LAND MANAGEMENT, ON MAY 22, 1972
- R3 ORIGINAL SURVEY PLAT AND NOTES, T4N, R23E, MDM, APPROVED BY THE U.S. SURVEYOR GENERALS OFFICE ON FEBRUARY 5, 1895



BOOK 4 OF RECORD OF SURVEY MAPS AT PAGE 92A