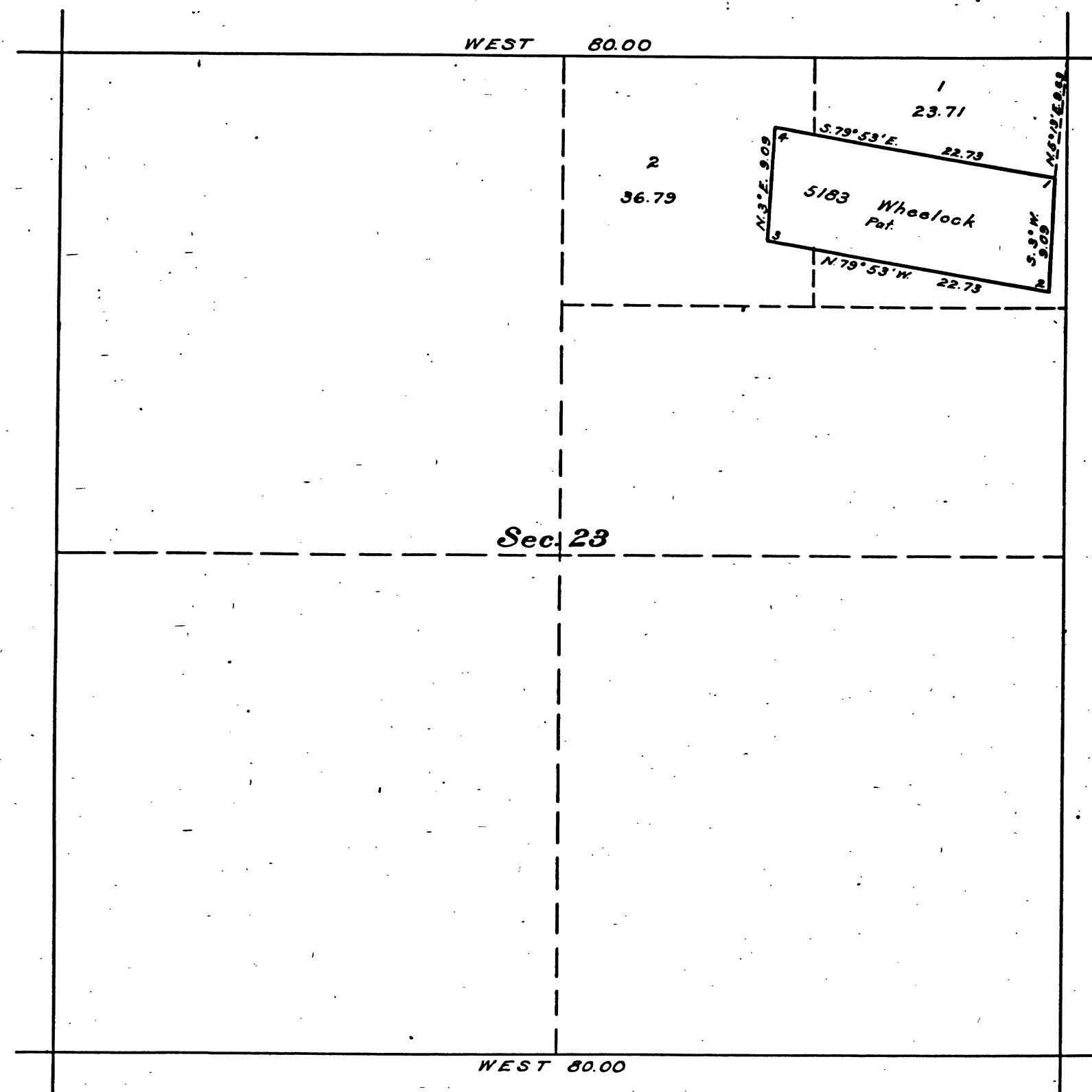


Amended Plat of Section 23,  
 Township N<sup>o</sup> 4 North, Range N<sup>o</sup> 13 East, Mount Diablo Meridian, California



Authorization; letter Sacramento 014588 "N" CAH dated May 21, 1923.

This amended plat of section 23, T. 4 N., R. 13 E., M.D.M., California, plat approved August 16, 1871, is made for the purpose of obtaining the area and legal description of that portion of the <sup>NE 1/4</sup> thereof remaining after segregating therefrom Sur. No. 5183, Wheelock lode, to accommodate stock-raising homestead application 014588 of Robert Arthur Sawyer, which embraces, with other lands, the above subdivision, and is hereby approved.

U.S. Surveyor General's Office,  
 San Francisco, California,  
 May 31, 1923.

*J. H. Clover*  
 U.S. Surveyor General for California.

Scale 10 chains to an inch.

Mean Magnetic Declination.

Surveys Designated	By Whom Surveyed	Group		Amount of Surveys			When Surveyed	
		No.	Date	Mls.	chs.	lks.	Begun	Completed

HSP

The above map of Township No. \_\_\_\_\_ Range No. \_\_\_\_\_ of the  
 Meridian \_\_\_\_\_ is strictly conformable to the field notes of the survey thereof on file  
 in this office, which have been examined and approved.

U.S. Surveyor General's Office.

Surveyor General.

41 333

REGISTER & RECEIVER'S RECEIPT  
 JUNE 20, 1923.

T. 4 N. R. 13 E. M.D.

CHAINS  
 10 20 40 60 80 120

BLM 173