

### BASIS OF BEARINGS & NOTES

The bearing North along the center line of Saratoga - Sunnyvale Road as shown on the map of Tract No. 1788, Springarden Unit No. 1, filed for record in Book 76 of Maps at Page 55, Santa Clara County Records, was taken as the basis of bearings shown on this map.

All distances and dimensions are given in feet and decimals thereof.

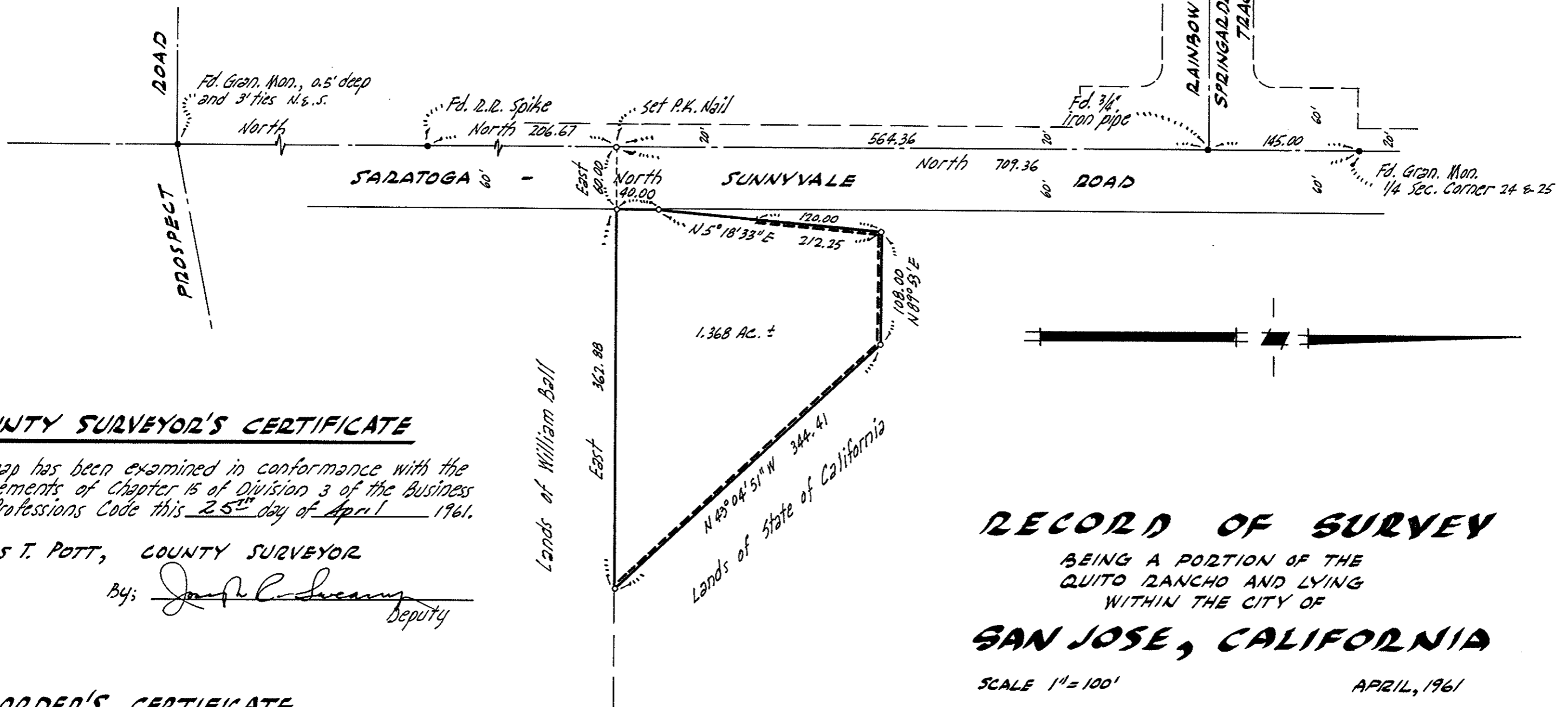
- indicates 3/4" iron pipe found or as noted otherwise.
- indicates 3/4" iron pipe set.
- indicates no access

### SURVEYOR'S CERTIFICATE

This map correctly represents a survey made by me or under my direction in conformance with the requirements of Chapter 15 of Division 3 of the Business and Professions Code at the request of Neil Chase in April 1961.

GEORGE E. SOMPS, D.C.E. No. 8718

*George E. Samps*



### COUNTY SURVEYOR'S CERTIFICATE

This map has been examined in conformance with the requirements of Chapter 15 of Division 3 of the Business and Professions Code this 25<sup>th</sup> day of April 1961.

JAMES T. POTT, COUNTY SURVEYOR

By: *Joseph L. Sweeney*  
Deputy

### RECORDER'S CERTIFICATE

File No. 1988466 Fee \$5.00 paid. Filed this 26<sup>th</sup> day of April, 1961, at 11:19 A.M., in Book 131 of Maps at page 49, Santa Clara County Records, at the request of MacKay & Samps.

PAUL D. TEILH, RECORDER, SANTA CLARA COUNTY

By: *E. B. O'Brien*  
Deputy

### RECORD OF SURVEY

BEING A PORTION OF THE  
QUITO RANCHO AND LYING  
WITHIN THE CITY OF

**SAN JOSE, CALIFORNIA**

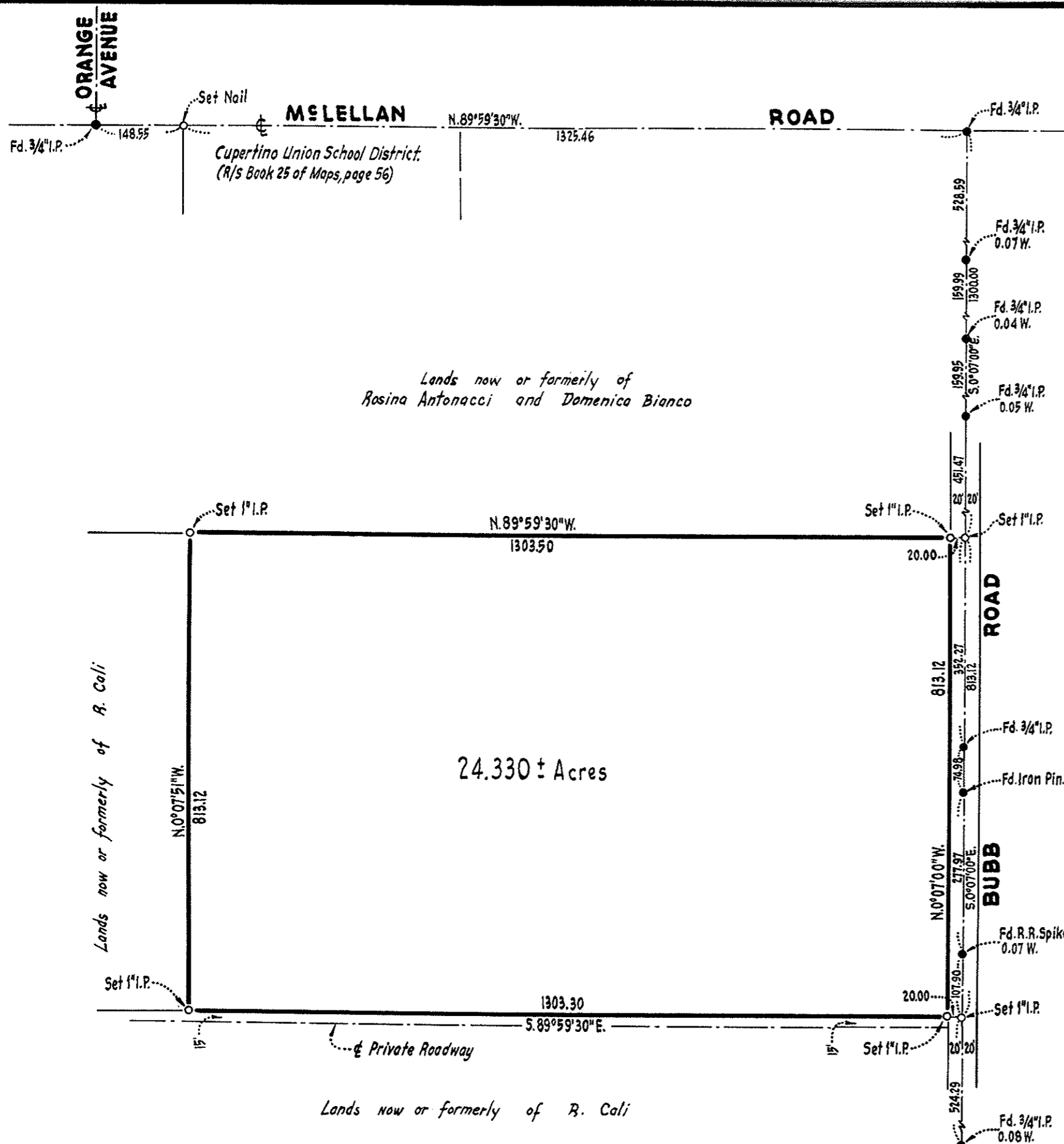
SCALE 1" = 100'

APRIL, 1961

*MacKay & Samps*

CIVIL ENGINEERS  
SUNNYVALE CALIFORNIA

1559



### SURVEYOR'S CERTIFICATE

This map correctly represents a survey made by me or under my direction in conformance with the requirements of Chapter 15 of Division 3 of the Business and Professions Code at the request of the Cupertino Union School District in May, 1960.

*George S. Nolte*  
R.C.E. 7595

### COUNTY SURVEYOR'S CERTIFICATE

This map has been examined for conformance with the requirements of Chapter 15 of Division 3 of the Business and Professions Code this 26<sup>th</sup> day of April, 1961.

JAMES T. POTT, County Surveyor

by Deputy *Joseph L. Sweeney*

### RECORDER'S CERTIFICATE

File No. 1990008 Fee \$5.00  
Filed for record this 28<sup>th</sup> day of April, 1961 at 3:34 P.M., in Book 131 of Maps at page 49 at the request of George S. Nolte.

PAUL D. TEILH, County Recorder

by Deputy *E. B. O'Brien*

### AMENDED RECORD OF SURVEY

OF A PORTION OF THE N.W. 1/4 OF SECTION 23, T.7S, R.2W, M.D.B. & M.

FOR CUPERTINO UNION SCHOOL DISTRICT

**SAN JOSE, CALIFORNIA.**

SCALE: 1" = 200'

APRIL, 1961.

**GEORGE S. NOLTE**

CIVIL ENGINEER - LAND SURVEYOR  
PALO ALTO - SANTA CLARA - WALNUT CREEK - SAN RAFAEL