



PANDA EXPRESS, INC.  
1683 Walnut Grove Ave.  
Rosemead, California  
91770  
Telephone: 626.799.9898  
Facsimile: 626.372.8268

All ideas, designs, arrangement and plans indicated or represented by this drawing are the property of Panda Express Inc. and were created for use on this specific project. None of these ideas, designs, arrangements or plans may be used by or disclosed to any person, firm, or corporation without the written permission of Panda Express Inc.

REVISIONS:	

ISSUE DATE:	
LANDLORD REVIEW	03-04-2022
FINAL LANDLORD REV.	06-20-2022
PERMIT	07-19-2022
BID SET	10-06-2022
CONSTRUCTION SET	01-16-2023

DRAWN BY: G. COLLINS

PANDA PROJECT #: D7861  
ARCH PROJECT #: JCDT21-0268

I certify that these documents were prepared or approved by me, and that I am a duly licensed architect/engineer under the laws of the State of Maryland, license number Sean P. Pick-Kell 52379 expiration date 03-08-2024



PANDA EXPRESS  
TRUE WARM & WELCOME  
10300 Mill Run Circle  
Owings Mills, MD 21117

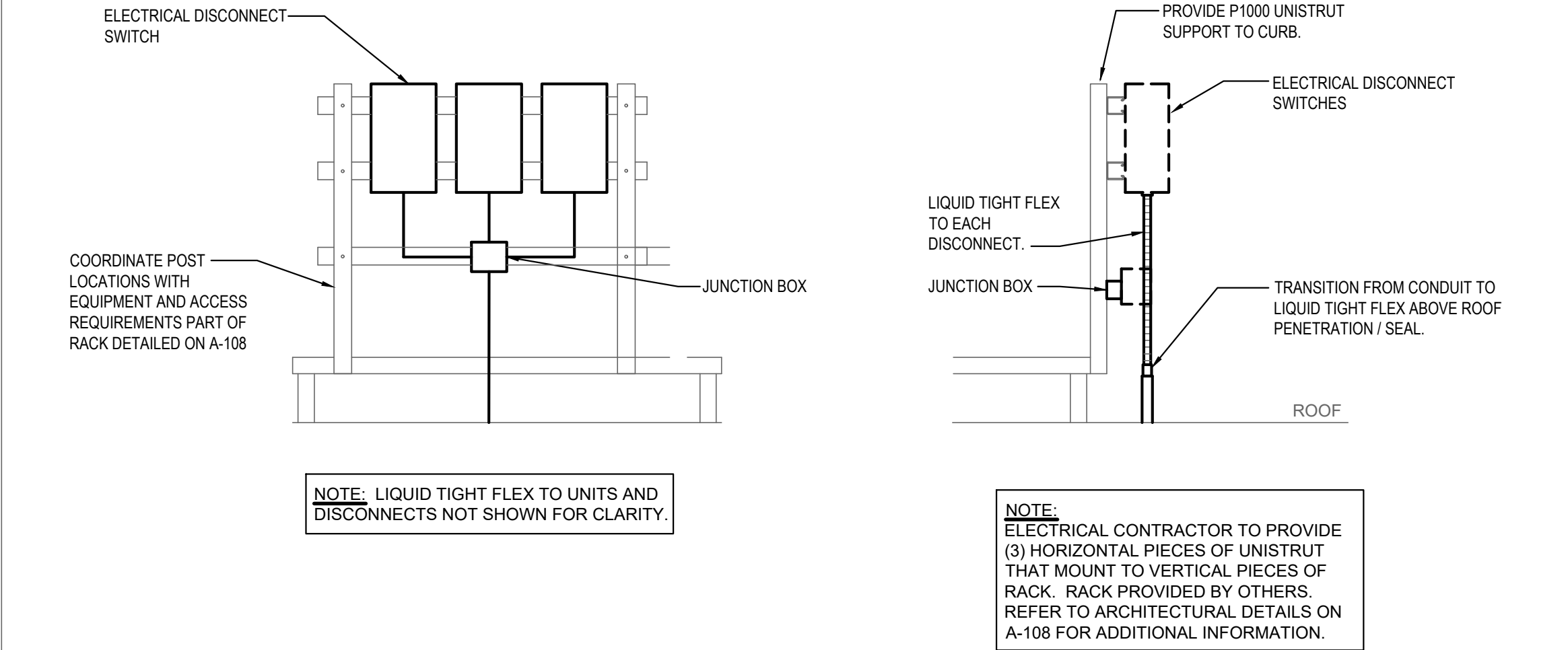
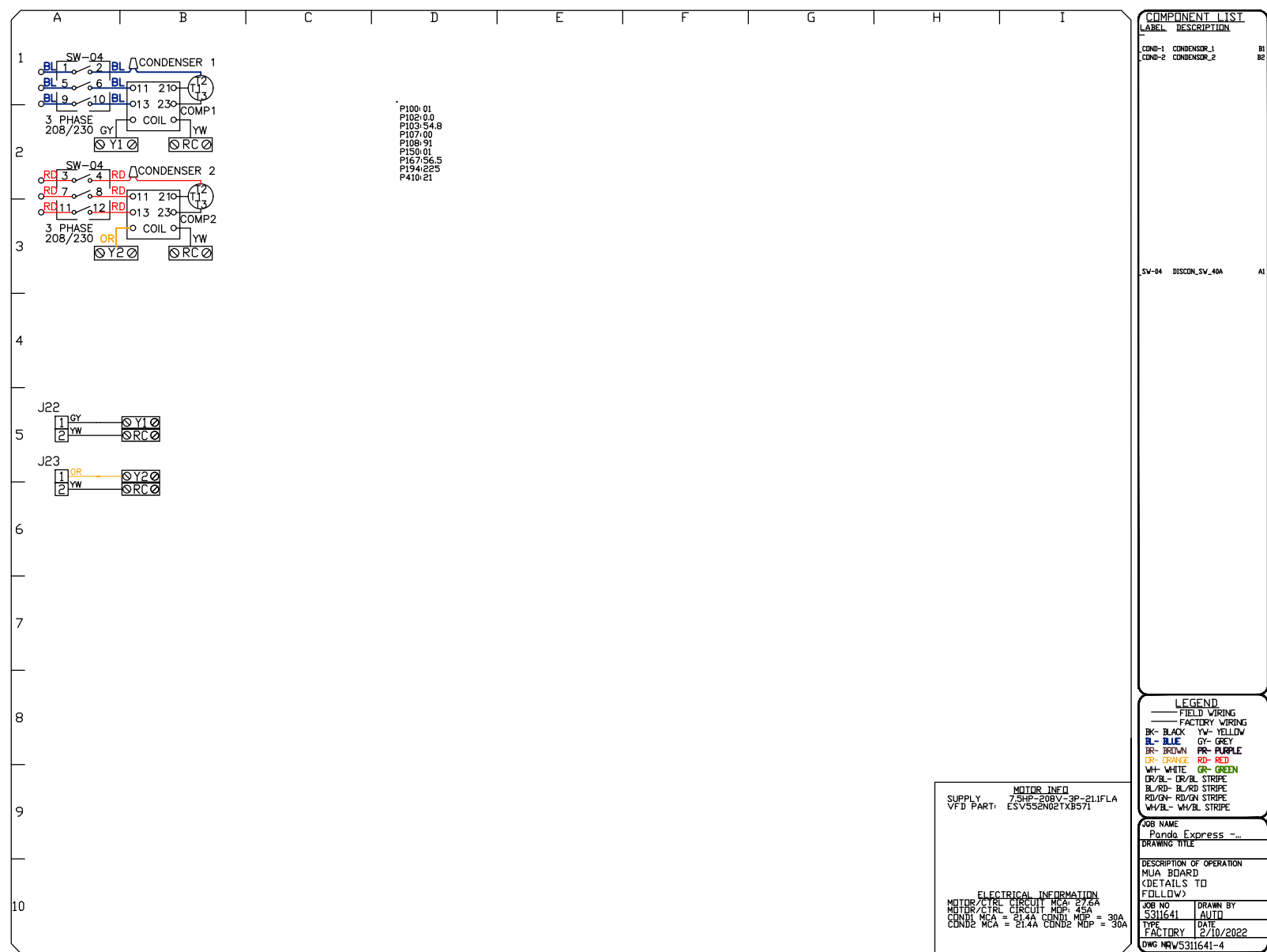
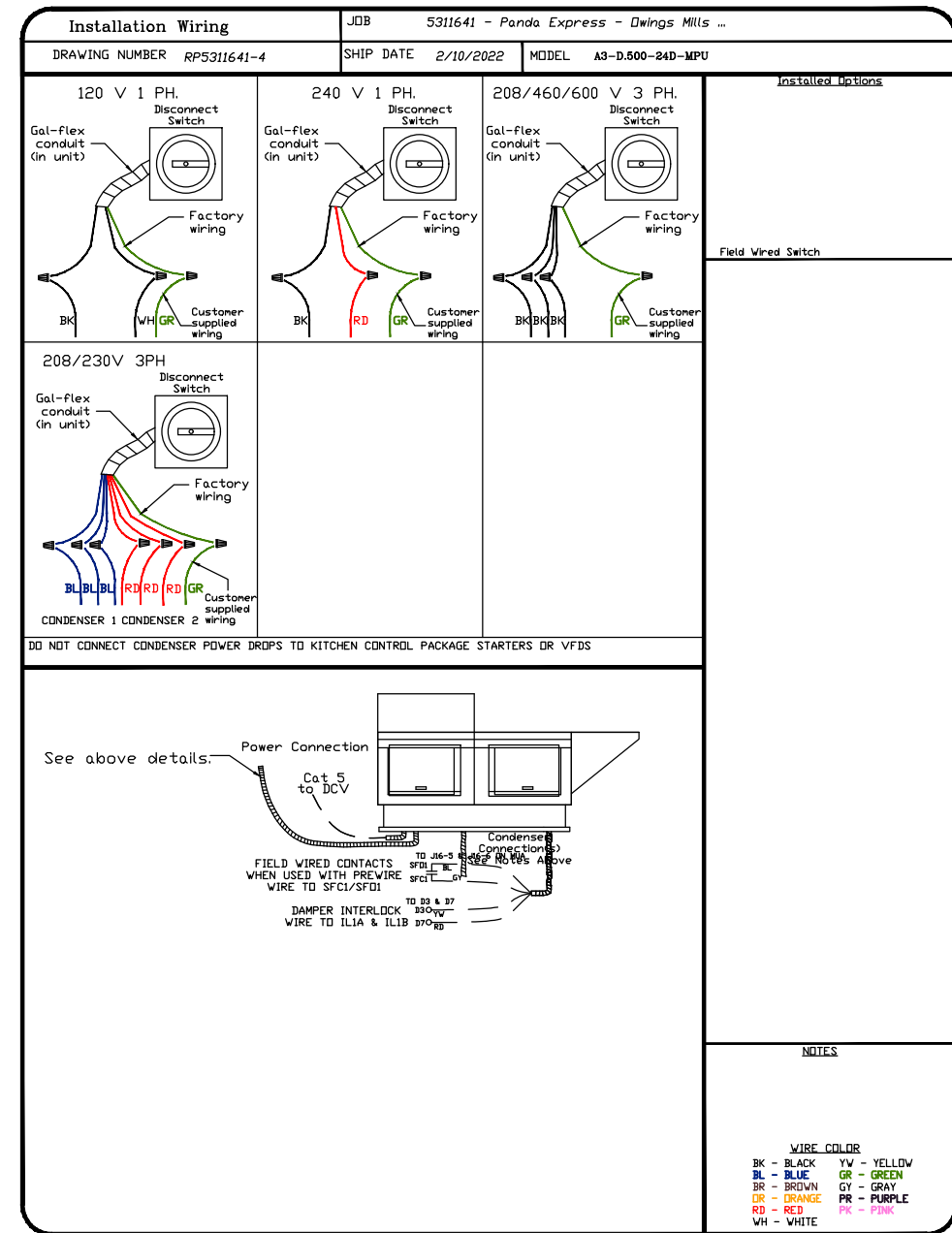
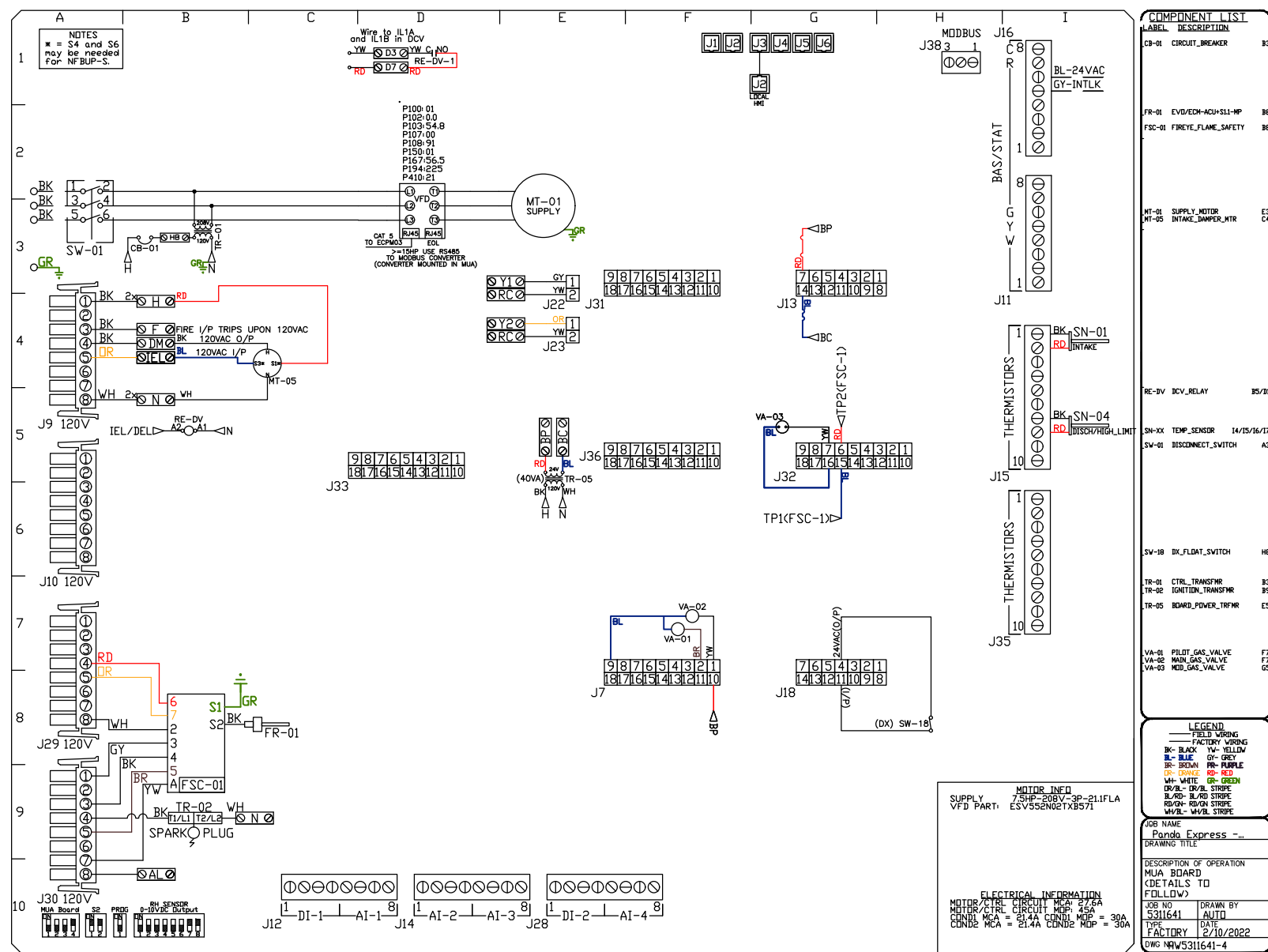
E-401

ELECTRICAL DETAILS, DIAGRAMS

TRUE WARM & WELCOME 2300 R6 R6

CONSTRUCTION SET

01-16-2023



EQUIPMENT DISCONNECT SWITCH SUPPORT 2  
NOT TO SCALE E-401

KITCHEN EXHAUST SYSTEM DIAGRAM 3  
NOT TO SCALE E-401

(NOT USED) MENU BOARD & SENSOR LOOP 1  
NOT TO SCALE E-401