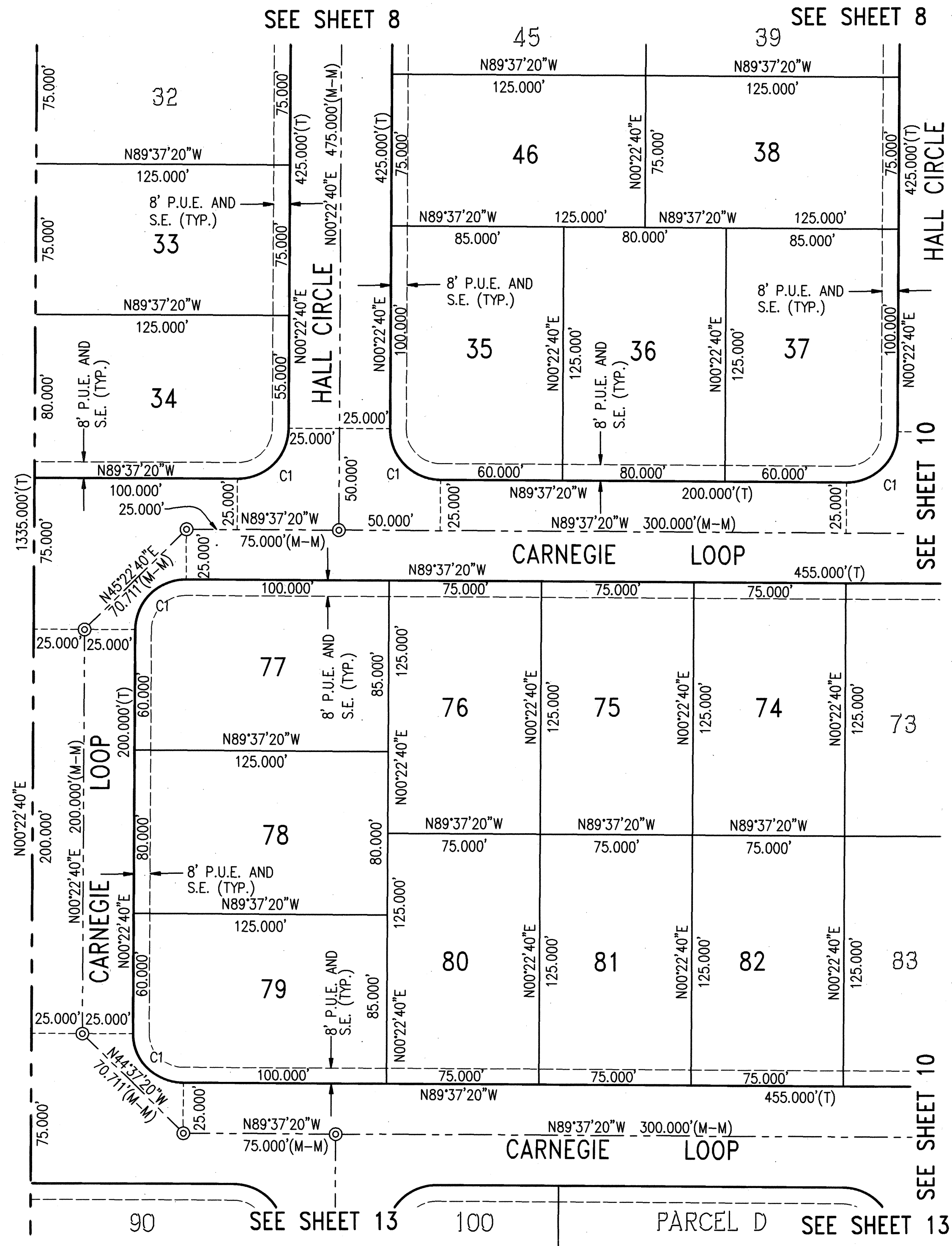


WENTE

727-00



CURVE TABLE			
CURVE	RADIUS	DELTA	LENGTH
C1	25.000'	90°00'00"	39.270'

LEGEND

- | | |
|----------|-----------------------------------|
| ----- | SUBDIVISION BOUNDARY |
| ----- | LOT LINE |
| ----- | EASEMENT LINE |
| ----- | MONUMENT LINE |
| (T) | TOTAL |
| (R) | RADIAL |
| () | RECORD DATA |
| (M-M) | MONUMENT TO MONUMENT |
| (M-TL) | MONUMENT TO TRACT LINE |
| ⊙ | SET STANDARD STREET MONUMENT |
| ⊙ | FOUND STANDARD STREET MONUMENT |
| ○ | SET 5/8" REBAR & CAP LS 7176 |
| ▲ | FOUND RAILROAD SPIKE |
| ● | FOUND MONUMENT AS NOTED |
| P.U.E. | PUBLIC UTILITY EASEMENT |
| S.E. | SIDEWALK EASEMENT |
| S.S.E. | SANITARY SEWER EASEMENT |
| S.D.E. | STORM DRAIN EASEMENT |
| S.O.E. | STORMWATER OVERFLOW EASEMENT |
| E.V.A.E. | EMERGENCY VEHICLE ACCESS EASEMENT |
| W.L.E. | WATER LINE EASEMENT |
| P.H.E. | PUBLIC HIGHWAY EASEMENT |

BASIS OF BEARINGS:

THE BASIS OF BEARINGS FOR THIS MAP IS DETERMINED BY FOUND MONUMENTS SHOWN HEREON. THE BEARING BEING N89°37'20"W PER TRACT 5466 (162 M 36). CALIFORNIA COORDINATE SYSTEM ZONE III.

NOTE: A CHISELED MARK SHALL BE CUT INTO THE TOP OF CURB AT THE PROLONGATION OF THE LOT LINES, AND A REBAR AND CAP SHALL BE SET AT ALL NON-FRONTAGE CORNERS AND ANGLE POINTS.

TRACT 6989
DUNSMUIR

BEING A SUBDIVISION OF A PORTION OF SECTION 14
TOWNSHIP 3 SOUTH, RANGE 2 EAST, MOUNT DIABLO MERIDIAN
AND A PORTION OF THE RANCHO LAS POSITAS
CITY OF LIVERMORE ALAMEDA COUNTY CALIFORNIA
CARLSON, BARBEE & GIBSON, INC.
ENGINEERS SURVEYORS PLANNERS
SAN RAMON, CALIFORNIA

SCALE: 1"=40'

DECEMBER 1999

SHEET 11 OF 13

BK 250 P. 39