

CORNER RECORD

Agency Index

BK 98 P6 49

Document Number

CR 10140City of BERKELEY

County of

ALAMEDA

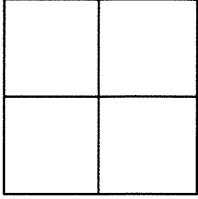
, California

Brief Legal Description

BRASS DISK MONUMENT LOCATED WITHIN VASSAR AVE IN FRONT OF
374 VASSAR AVENUE

CORNER TYPE

COORDINATES (Optional)



Government Corner

☐

Control

☒

Meander

☐

Property

☐

Rancho

☐

Other

☐

N.

E.

Elevation

Units

Metric ☐U.S. Survey Foot ☒

Horizontal Datum

Zone

Epoch Date

Vertical Datum

☐ Complies with Public Resources Code §§8801-8819☐ Complies with Public Resources Code §§8890-8902

Date of Survey

5/11/17

PLS Act Ref:

☐

8765(d)

☒

8771

☐

8773

☐

Other:

Corner/
Monument:☒

Left as found

☐

Established

☐

Rebuilt

☒

Pre-Construction

☐

Found and tagged

☐

Reestablished

☐

Referenced

☐

Post-Construction

Narrative of corner identified and monument as found, set, reset, replaced, or removed:

☒ See sheet #2 for description(s) :

FOUND 2" BRASS DISK WITH PUNCH IN MONUMENT WELL. CITY ID B1622

FOUND AND SET POINTS AS SHOWN ON PAGE 2.

THIS POINT WAS REFERENCED PRIOR TO A CONSTRUCTION PROJECT IN THE VICINITY.

THE TIES SHOWN HEREON ARE FOR THE PURPOSE OF PERPETUATING FOUND MONUMENTATION.

NO CLAIM IS MADE AS TO THE RELATIONSHIP OF THE POINTS OR LINES SHOWN HEREON TO TRUE BOUNDARY LOCATION.

SURVEYOR'S STATEMENT

This Corner Record was prepared by me or under my direction in conformance with

the Professional Land Surveyors' Act on

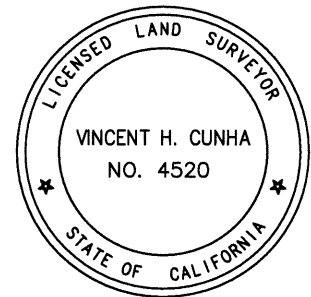
MAY 19

, 2017

Signed

VINCENT H. CUNHA

P.L.S. No.

LS 4520

COUNTY SURVEYOR'S STATEMENT

This Corner Record was received

1 JUNE

, 2017

and examined and filed

11 AUGUST

, 2017

Signed

Michael Rubner

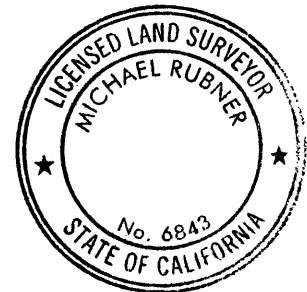
P.L.S. or R.C.E. No.

6843

Title

COUNTY SURVEYOR

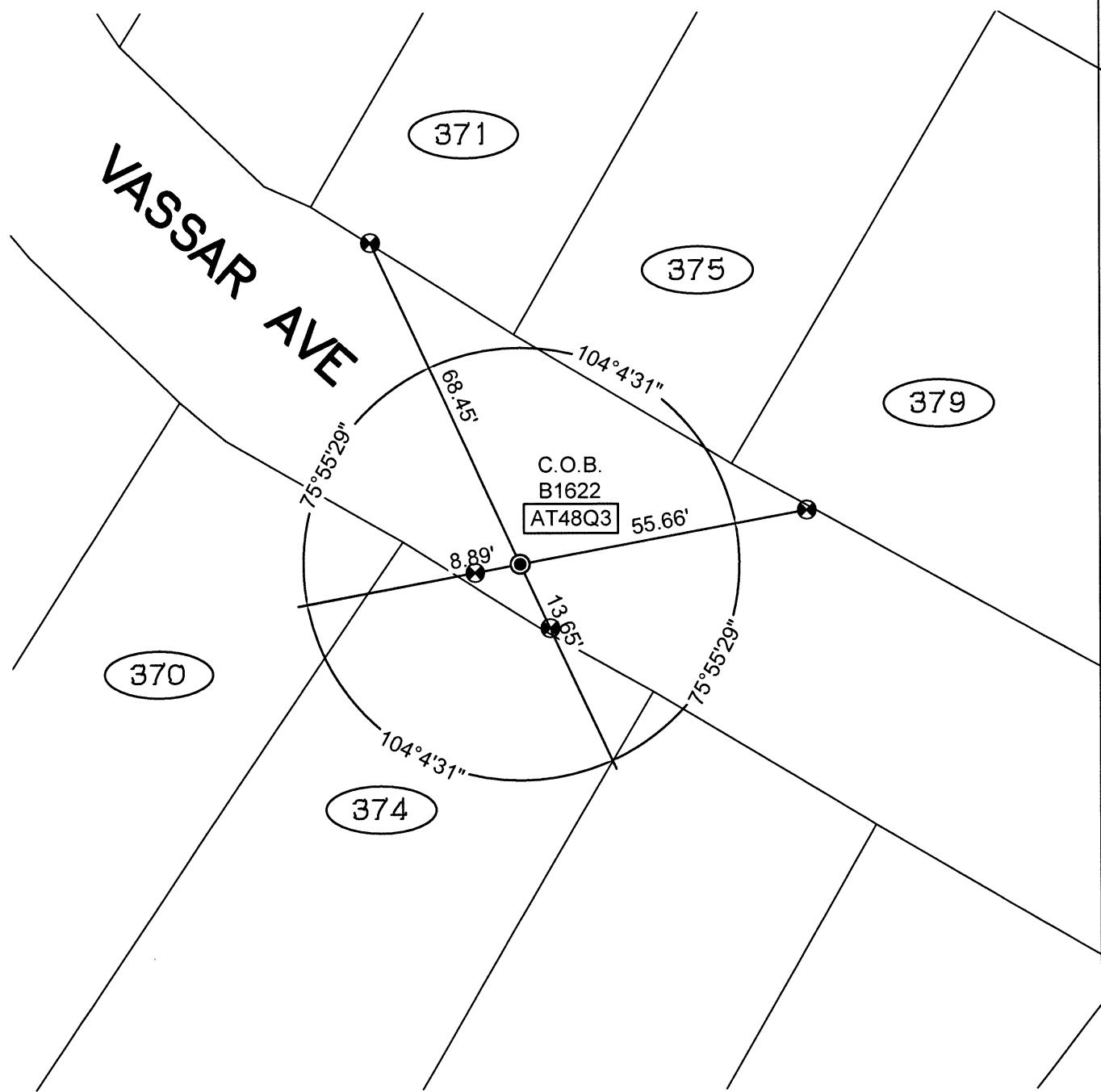
County Surveyor's Comment



SCALE: 1"=30'

LEGEND

- FOUND BRASS DISK WITH PUNCH IN MONUMENT WELL
- ⊗ SET CUT CROSS IN WALK
- ✕ SET CUT CROSS IN CURB
- ✕ SET MAG AND SHINER
- SET REBAR & CAP STAMPED "CEI RP"
- AA### ALAMEDA COUNTY MONUMENT ID
- 19592 REFERENCE STREET ADDRESS



216010-M-VASSAR-CR1